

CERTIFICATE OF LOCATION OF GOVERNMENT CORNER

N 1/4 Corner of Section 32, Township 134N, Range 29W, 5th p.m., State of Minnesota, County of Cass

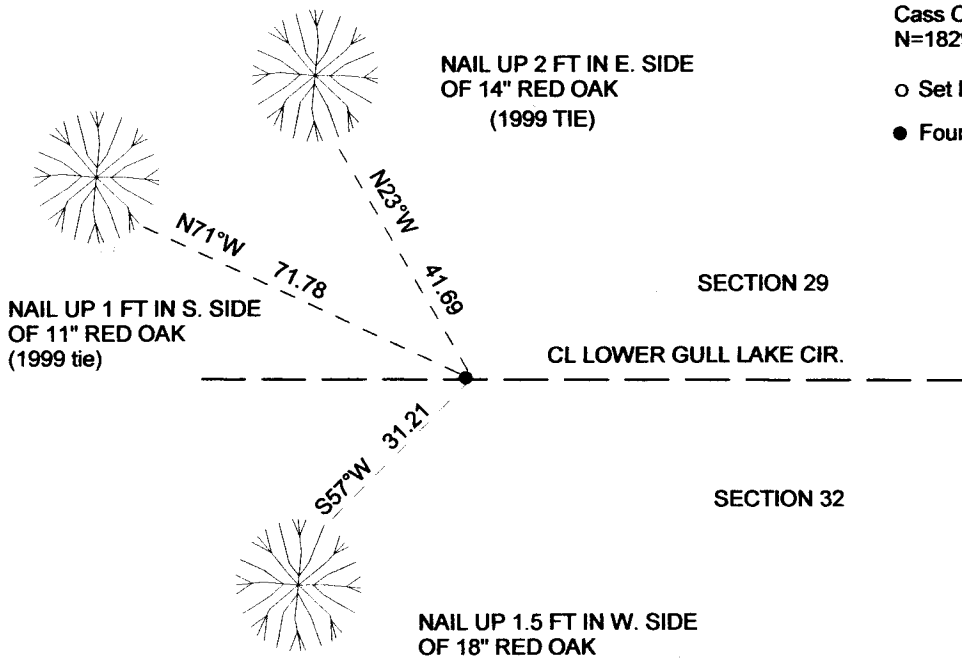
At the corner location shown on the sketch:

On MAY 26, 2015 found a 1" X 1" SQUARE IRON 2.5 FEET SOUTH OF C/L
Date

left monument as found lowered monument removed monument (explain)

On _____ placed a _____
Date

SKETCH OF REFERENCE TIES

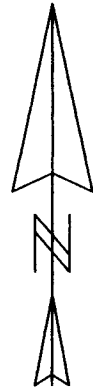


Tie Distances are measured to the spikes.

Cass County Coordinate System (South Zone)
N=182903.55 E=527010.08

○ Set Re-Rod with RLS cap No. 17774

● Found Pipe



NOT TO SCALE

Statement of evidence relative to this corner location is on back of page.

I hereby certify that this document and the data contained herein was prepared by me or under my direct supervision.

Marvin R Kohout 6 Oct 2015
Marvin R. Kohout Date

License No. 17774

Land surveyor

OFFICE OF COUNTY RECORDER



A000616509

OFFICE OF THE COUNTY RECORDER
CASS COUNTY, MINNESOTA
CERTIFIED, FILED, AND/OR
RECORDED ON

10/22/2015 1:58:42 PM

AS DOC #: **A000616509**

PAGES: 3

REC FEES: 0.00

KATHRYN M. NORBY
CASS COUNTY RECORDER

BY SR Dep TX#: 126608

Page 1 of 3 A000616509



STATEMENT OF EVIDENCE

NORTH QUARTER CORNER OF SECTION 32, TOWNSHIP 134N, RANGE 29W, 5TH P.M.

1865 DEPUTY SURVEYORS GEORGE B. WRIGHT AND THOMAS B. WALKER IN THE ORIGINAL GOVERNMENT SURVEY SET A POST AND MARKED B.T.'S REFERENCES ARE:

20" NORWAY PINE	4" BLACK OAK
N21W	S81E
66 LKS (43.56')	34 LKS (22.44')

RECORDS ON FILE AT THE MN HISTORICAL SOCIETY, ST. PAUL, AND COPIES FILED WITH CASS COUNTY HIGHWAY DEPARTMENT/ SURVEYOR'S OFFICE (CCHD/SO).

1970 CASS COUNTY HIGHWAY DEPARTMENT FOUND IRON MONUMENT, CCHD/SO

1988 JEFFREY W. MILLER LIC. NO. 13336, WIDSETH, SMITH, AND NOLTING, ON THE PLAT OF "MAPLEWOOD SHORES" SHOWS CORNER BEING REFERENCED. BOOK "N", PAGE 72, DOCUMENT NUMBER 305731, CASS COUNTY RECORDER'S OFFICE.

1994 JEFFREY W. MILLER, ON THE PLAT OF "SECOND ADDITION TO MAPLEWOOD SHORES" SHOWS CORNER BEING REFERENCED. BOOK "O", PAGE 54, DOCUMENT NUMBER 359277, CASS COUNTY RECORDER'S OFFICE.

1999 CCSO FOUND 1" SQUARE PIN 2.5 FEET SOUTH OF CENTERLINE REFERENCES ARE:

6" RED OAK	10" RED OAK	9" RED OAK	10" RED OAK
N70W	N25W	N58E	S10E
72.03 FT	41.65 FT	59.92	151.44

ALL DISTANCES TO DOUBLE HEADED NAIL, CCHD/SO

2006 JARRET M. LEAS, LIC. NO. 42619, KRAMER, LEAS AND DELEO, ON HIS CERTIFICATE OF SURVEY, INDICATES A FOUND IRON MONUMENT, CCHD/SO.

2009 CHAD CONNER, LIC. NO. 41643, WIDSETH, SMITH AND NOLTING, ON HIS
CERTIFICATE OF SURVEY, INDICATES A FOUND IRON MONUMENT,
CCHD/SO.

2015 MARVIN KOHOUT LS NO. 17774 AND TRAVIS BARE, TECHNICIAN, OF
KOHOUT LAND SURVEYING FOUND A 1" X 1" SQUARE IRON MONUMENT.
ACCEPTED MONUMENT AS MARKING THE LOCATION OF THE N1/4 CORNER.