



A000616452

OFFICE OF THE COUNTY RECORDER
CASS COUNTY, MINNESOTA
CERTIFIED, FILED, AND/OR
RECORDED ON

10/20/2015 10:54:14 AM

AS DOC #: A000616452

PAGES: 2

REC FEES: 0.00

KATHRYN M. NORBY
CASS COUNTY RECORDER

BY SR _____ Dep TX#: 126556

Index No. E.0-09.0

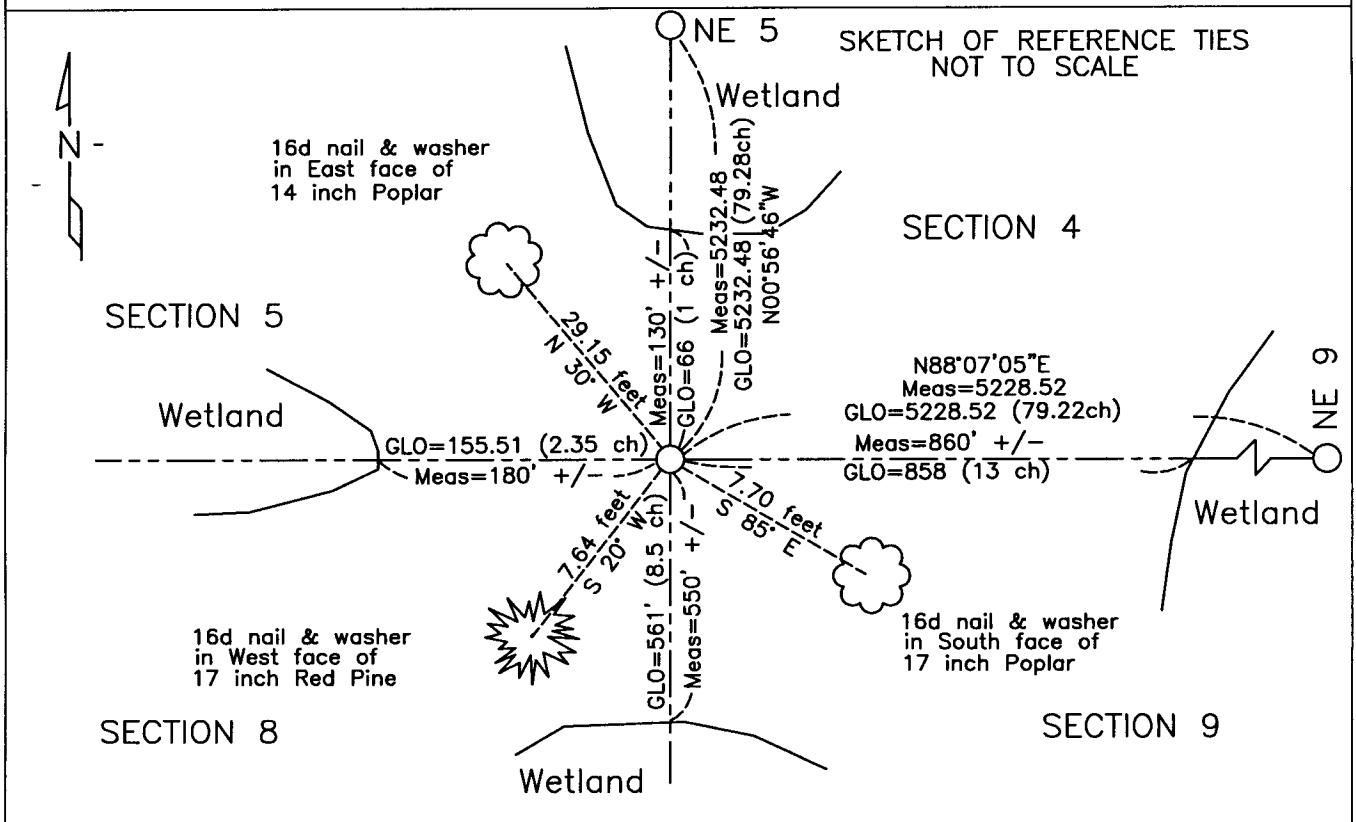
CERTIFICATE OF LOCATION OF GOVERNMENT CORNER

Northeast Corner of Section 8, Township 137 N, Range 31 W, 5th P.M.

STATE OF MINNESOTA, County of CASS

At the corner location shown on the sketch:

- On _____ found _____
- left monument as found, lowered monument, removed monument (explain)
- On 04/15/2015 Set 1/2" x 16" iron pipe with cap marked "Clark 44530"



NAD83 (1996 ADJUSTMENT)
CASS COUNTY SOUTH DATUM

N= 299,387.756
E= 461,628.608

Statement of evidence relative to
this corner is on back of page

I hereby certify that this document and the
data contained herein was prepared by me or
under my direct supervision.

Craig E. Johnson 10/06/2015

Craig E. Johnson DATE

Registration No. 44530

- Land surveyor,
- County Surveyor,





Index No. E.0-09.0

Statement of Evidence

Northeast corner of Section 8, Township 137 North, Range 31 West, 5th Principal Meridian.

Nov/Dec 1870 Richard Cronk, Deputy Surveyor, General Land Office (GLO), set a post for the original corner and referenced it as follows:

15" N.Pine S 40° E 1.22 chains (80.5 feet) 17" N.Pine S 6°31' W 1.30 chains (85.8 feet)
16" N.Pine N 70° W 95 links (62.7 feet) 10" Dead W.Pine N 44° E 82 links (54.12 feet)

The above record is on file with the Minnesota Historical Society in St. Paul, Minnesota, copies are filed with the Cass County Highway Department, Surveyor's Office (CCHD/SO).

April 2015 Craig Johnson, LS 44530, and Cody Johnson, technician, found no evidence of original corner. Set a 1/2" x 16" iron pipe with cap marked "Clark 44530 at GLO plat distance from the Northeast corner of Section 5 (5232.48) and GLO plat distance from the Northeast corner of Section 9 (5228.52). The 4 GLO ties to the wetlands surrounding the Northeast corner of Section 8 seemed to corroborate the position. New witnesses established as follows:

14" Poplar N 30° W 29.15 feet 17" Red Pine S 20° W 7.64 feet
17" Poplar S 85° E 7.70 feet

Corner position monumented in 2015 is accepted as the obliterated position for the corner.

County Coordinates (Cass County South)

Northing 299,387.756

Easting 461,628.608