



A000616083

OFFICE OF THE COUNTY RECORDER  
 CASS COUNTY, MINNESOTA  
 CERTIFIED, FILED, AND/OR  
 RECORDED ON

10/7/2015 11:11:18 AM

AS DOC #: A000616083

PAGES: 2

REC FEES: 0.00

KATHRYN M. NORBY  
 CASS COUNTY RECORDER

BY SR \_\_\_\_\_ Dep TX#: 126264

Index No. A.0-23.0

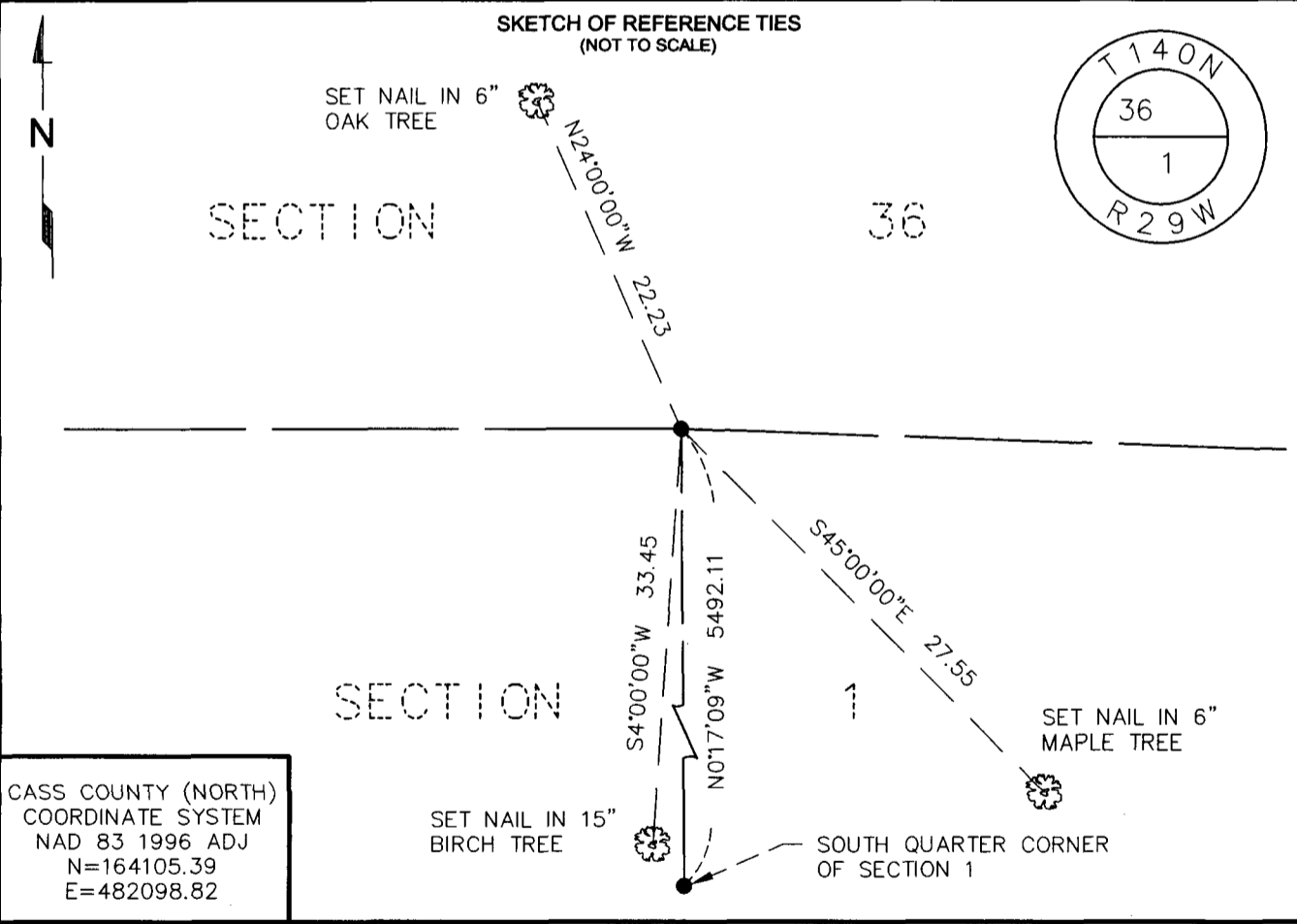
**CERTIFICATE OF LOCATION OF GOVERNMENT CORNER**

NORTH QUARTER Corner of Section 1, Township 140, Range 29, 5TH P.M.

STATE OF MINNESOTA, County of CASS

At the location shown on the sketch:

- On 6-8-15 found 2 1/4" IRON PIPE IN PLACE.  
DATE
- left monument as found,  lowered monument,  removed monument (explain)
- On \_\_\_\_\_ placed an \_\_\_\_\_  
DATE



CASS COUNTY (NORTH)  
 COORDINATE SYSTEM  
 NAD 83 1996 ADJ  
 N=164105.39  
 E=482098.82

Statement of evidence relative to this corner is on back of page.

I hereby certify that this survey, plan or report was prepared by me or under my direct supervision and that I am a duly Registered Land Surveyor under the laws of the State of Minnesota.

Richard D Schieman

Date 6-23-15 Registration No. 47591

OFFICE OF THE COUNTY RECORDER  
 County of \_\_\_\_\_

I hereby certify that this document was filed in the Co. Recorders office at .M. \_\_\_\_\_ on the \_\_\_\_\_ day of \_\_\_\_\_ A.D., 20 \_\_\_\_\_

County Recorder  
 By \_\_\_\_\_, Deputy

DOCUMENT NO. \_\_\_\_\_



Index No.     A.0-23.0    

**STATEMENT OF EVIDENCE:**

- 1870      U.S. General Land Office surveyed and subdivided the township. The North Quarter corner of Section 1, 140-29 was not set during this process. Records on file with the Minnesota Historical Society in St. Paul and copies at the Cass County Highway Department Surveyor's Office.
  
- 1981      Roger Mustonen shows a monument found in place and accepted its position as the North Quarter corner of Section 1 shown on the plat of Lantern Bay Subdivision on file in Cass County Recorder's Office.
  
- 2004      Landecker & Associates found an iron monument in place and accepted its position reflected on their certificate of survey file number 042072 on file in the Cass County Highway Department Surveyor's Office.
  
- 2015      Widseth Smith Nolting (WSN) was contracted by the Minnesota Department of Natural Resources to conduct a boundary survey in Section 1, T.140N., R.29W., Cass County, Minnesota. In order to complete the survey it was necessary to recover this corner. A WSN survey crew searched the area and recovered the pipe shown on the plat of Lantern Bay Subdivision and the 2004 Landecker & Associates certificate of survey and was accepted as the corner. New reference ties were established to witness its location.