



A000615451

OFFICE OF THE COUNTY RECORDER
CASS COUNTY, MINNESOTA
CERTIFIED, FILED, AND/OR
RECORDED ON

9/17/2015 10:38:55 AM

AS DOC #: A000615451

PAGES: 2

REC FEES: 0.00

KATHRYN M. NORBY
CASS COUNTY RECORDER

BY SR _____ Dep TX#: 125756

Page 1 of 2 A000615451

Twp 137 Rge 31 Index No. A.0-23.0

CERTIFICATE OF LOCATION OF GOVERNMENT CORNER

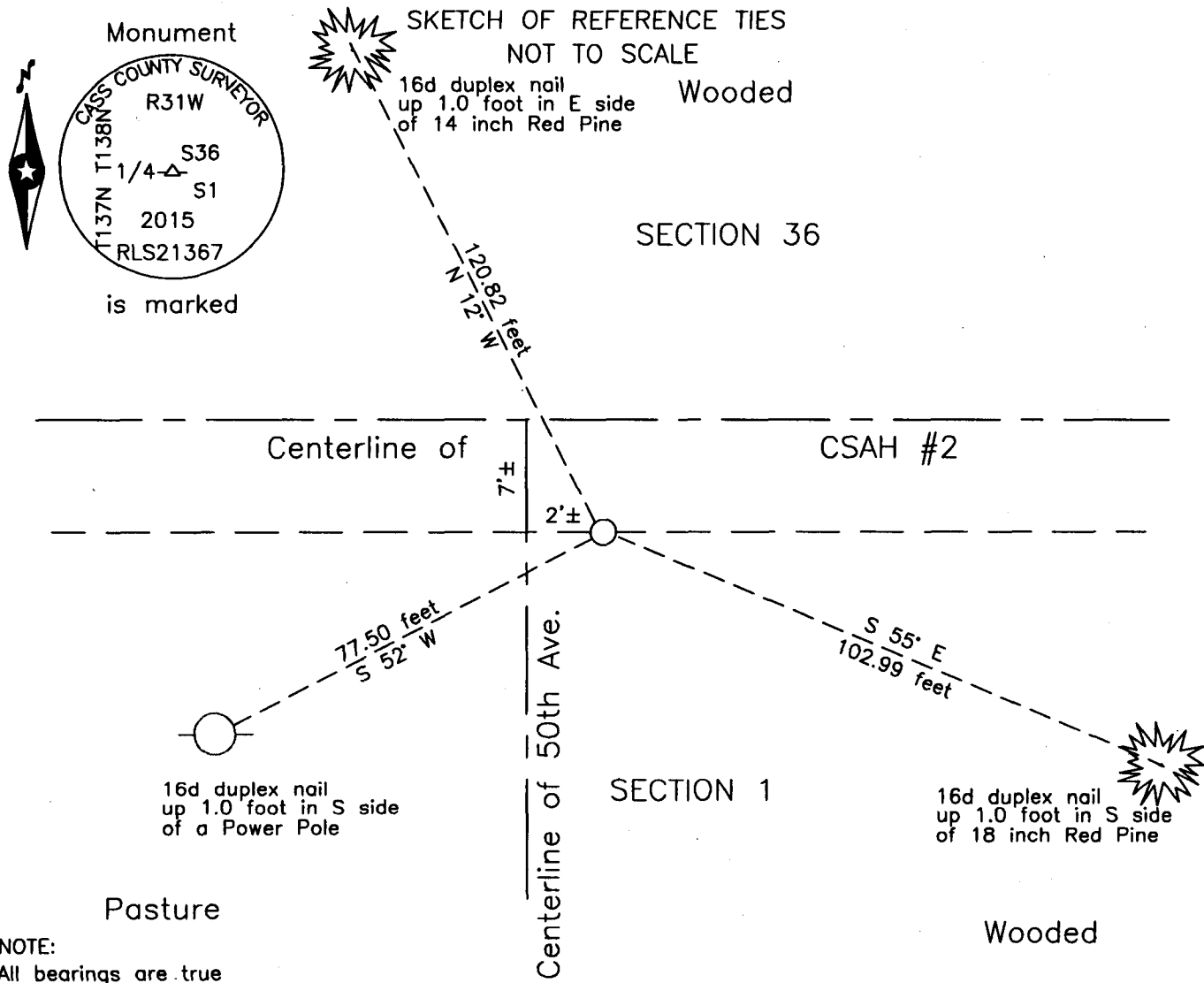
North Quarter corner of Section 1, Township 137 N., Range 31 W., 5th P.M.
State of Minnesota, County of Cass

At the corner location shown on the sketch:

On 15 July 2014 found a PK nail, flush, 7 feet±, south of centerline of CSAH #2
and 2 feet± east of centerline 50th Street.

left monument as found lowered monument removed monument (explain)

On 9 Sept 2015 placed an 1 inch by 30 inch aluminum tube with aluminum cap,
down 0.05 foot, 2 feet± east of centerline 50th Avenue.



NOTE:
All bearings are true

Statement of evidence relative to this corner location is on the back of this page.

I hereby certify that this survey, plan or report was prepared by me or under my direct supervision and that I am a duly Licensed Land Surveyor under the laws of the State of Minnesota.

Terry L. Freeman
Terry L. Freeman, Cass County Surveyor
Date 9/16/15 MN License No. 21367



Index No. A.0-23.0

Statement of Evidence

North Quarter corner of Section 1, Township 137 North, Range 31 West, 5th Principal Meridian.

- Aug. 1865 G.B. Wright, General Land Office (GLO) Deputy Surveyor, notes for the North line of Township 137 North, Range 31 West, set a post for the original corner and referenced it as follows:
6" N. Pine N 14° W 45 links(29.7 feet)
Said records are on file with the Minnesota Historical Society, St. Paul, Minnesota, copies are filed with the Cass County Highway Department Surveyor's Office (CCHD/SO).
- Feb. 1909 J.W. Curo, LS 1428, Cass County Surveyor, Survey Book A, Record No. 158, page 333 and 336 also Curo Book 85, page 298, on file in the CCHD/SO, states, set temp. ¼ hub, Gov't witness gone and "drive a small wood peg with new bearings as follows".
3" Jack Pine NW 23.93 feet 3" Jack Pine SW 17.70 feet
- July 1915 J.W. Curo, LS 1428, Cass County Surveyor, Contract No. 12, Subdivision of Section 1, recorded in the Cass County Recorders Office as Survey No. 62, and on file in the CCHD/SO, indicates a known corner established by this survey.
- Nov. 1915 J.A. Johnston, Survey Record No. 433, Book C, page 283 and Curo Book 80, pages 6 and 29, on file in the CCHD/SO, indicates corner set lost and notes IM driven flush with road.
- May 1918 Bungo Township, Township Road Order, on file in the CCHD/SO, states "Beginning at Town Line Road between Bungo and Bull Moose Twp. At NW corner of NE ¼ and NE corner of NW ¼ Section One (1) running South one half mile on quarter line to the middle quarter post".
- Oct. 1930 J.W. Curo, LS 1428, Curo Book 224, page 87, on file in the CCHD/SO, indicates corner and witnesses as follows:
10" Tel Pole N 5°32' W 29.95 feet 12" Pine Stp root N 53°53' W 38.40 feet
8" Tel Pole S 57°40' W 41.20 feet 7" Fence Cor S 44°50' W 23.15 feet
10" J. Pine S 74°30' E 74.70 feet 15" Pine Stp root S 41°10' E 31.65 feet
10" Fence Cor S 44°05' E 20.90 feet
- 1957 Cass County Highway Department, (CCHD), County State Aid Highway Number 2, construction plan SP 11-606-01 on file in the CCHD, indicates the subject corner assumed, on centerline at Station 391+74.
- April 2007 Stonemark Land Surveying, Section Subdivision, copy on file in the CCHD/SO, indicates a position for the subject corner.
- July 2014 B. Hippen, technician, records of the CCHD/SO, found a Concrete nail, 7 feet, more or less, south of centerline CSAH #2 and 2 feet, more or less, east of 50th Avenue and witnessed as follows:
14" Red Pine N 12° W 120.82 feet 18" Red Pine S 55° E 102.99 feet
Power Pole S 52° W 77.50 feet
- Sept. 2015 B. Hippen, technician, records of the CCHD/SO, set a 1 inch by 30 inch Aluminum tube with Aluminum cap at the 2007 Stonemark Land Surveying position, 7 feet, more or less, south of the centerline of CSAH #2.

The monument, recovered and established references for the position are shown on the face of this document.

Analysis of the recovered record data, field evidence and survey measurements, indicates that the monument set by CCHD/SO in 2015 is the accepted location of this corner.

County Coordinates (Cass County South)

Northing 304965.60
Easting 480041.47