



A000615443

OFFICE OF THE COUNTY RECORDER
CASS COUNTY, MINNESOTA
CERTIFIED, FILED, AND/OR
RECORDED ON

9/17/2015 10:38:47 AM

AS DOC #: A000615443

PAGES: 2

REC FEES: 0.00

KATHRYN M. NORBY
CASS COUNTY RECORDER

BY SR Dep TX#: 125756

Twp 139 Rge 29 Index No. N.0-15.0

CERTIFICATE OF LOCATION OF GOVERNMENT CORNER

North Quarter corner of Section 22, Township 139 N., Range 29 W., 5th P.M.

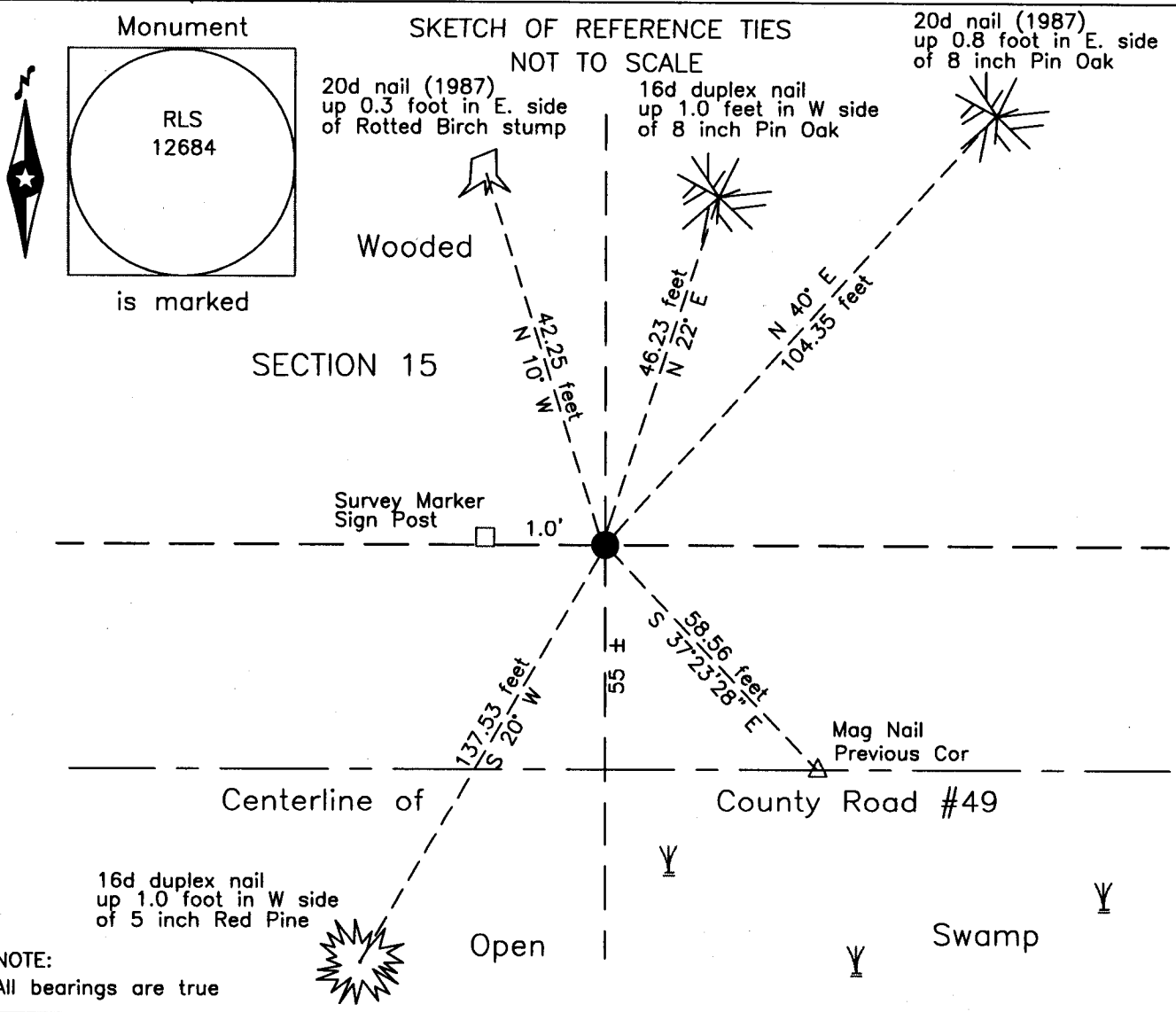
State of Minnesota, County of Cass

At the corner location shown on the sketch:

On 28 July 2014 found a 2 inch square steel tube with aluminum cap, up 0.2
foot, 55 feet± north of centerline of County Road #49.

left monument as found lowered monument removed monument (explain)

On _____ placed _____



NOTE:
All bearings are true

Statement of evidence relative to this corner location is on the back of this page.

I hereby certify that this survey, plan or report was prepared by me or under my direct supervision and that I am a duly Licensed Land Surveyor under the laws of the State of Minnesota.

Terry L. Freeman, Cass County Surveyor
Date 9/16/15 MN License No. 21367

Page 1 of 2 A000615443

Statement of Evidence

North Quarter corner Section 22, Township 139 North, Range 29 West, 5th Principal Meridian.

Oct. 1987 G.H. Stevenson, LS 12684, filed a Certificate of Location of Government Corner, in the Cass County Recorders Office, as Document Number 300480. See document for original and subsequent survey information.

Jan. 1995 W.E. Curo, LS 11395, Curo Book 304, page 145, on file in the CCHD/SO, indicates the subject corner.

Nov. 2008 B. Hippen, technician, records of the CCHD/SO, found a 2 inch square steel post with aluminum cap, up 0.3 foot, 55 feet, more or less, north of centerline of County Road #49 and located it with the Global Positioning System (GPS).

July 2014 B. Hippen, technician, records of the CCHD/SO, found a 2 inch square steel post with aluminum cap, up 0.2 foot, 55 feet, more or less, north of centerline of County Road #49 prior to construction and witnesses as follows:
8" Pin Oak N 40° E 104.35 feet(1987) Survey Marker Sign West 1.0 foot(1987)
8" Pin Oak N 22° E 46.23 feet Rotted Birch Stump N 10° W 42.25 feet(1987)
5" N. Pine S 20° W 137.53 feet
The corner position used by other surveys prior to 1987, now marked by a spike in the center of County Road #49 is S 37°23'28" E, 58.56 feet from the 1987 monument.

The recovered and established references for the position are shown on the face of this document.

Analysis of the recovered record data, field evidence and survey measurements, indicates that the monument recovered by the CCHD/SO in 2014 is the accepted location of this corner.

County Coordinates (Cass County North)

Northing 116545.78

Easting 471206.05