



A000615439

OFFICE OF THE COUNTY RECORDER
CASS COUNTY, MINNESOTA
CERTIFIED, FILED, AND/OR
RECORDED ON

9/17/2015 10:38:43 AM

AS DOC #: A000615439

PAGES: 2

REC FEES: 0.00

KATHRYN M. NORBY
CASS COUNTY RECORDER

BY SR Dep TX#: 125756

Twp 139 Rge 28 Index No. N.0-03.0

CERTIFICATE OF LOCATION OF GOVERNMENT CORNER

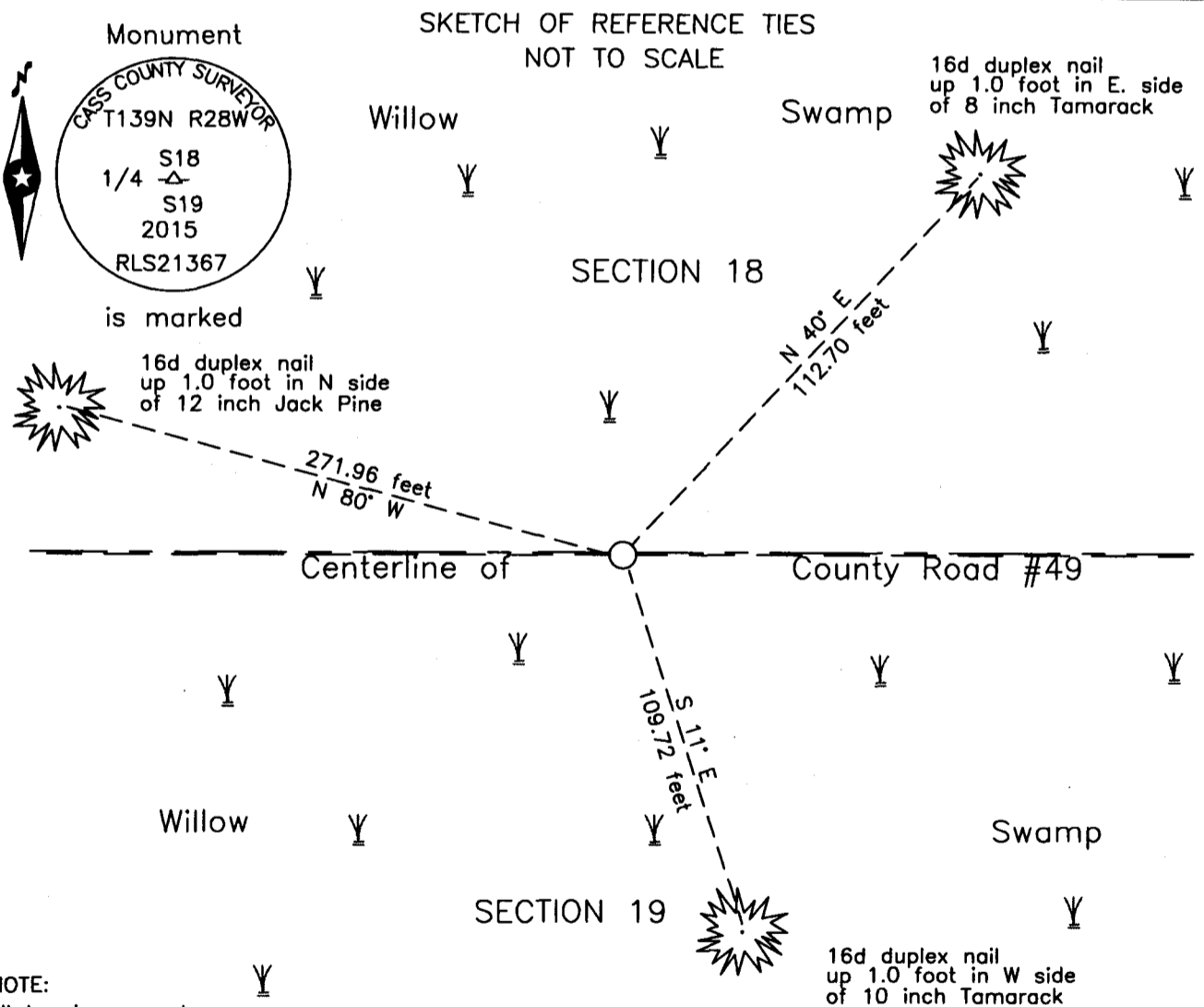
North Quarter corner of Section 19, Township 139 N., Range 28 W., 5th P.M.
State of Minnesota, County of Cass

At the corner location shown on the sketch:

On _____ found _____

left monument as found lowered monument removed monument (explain)

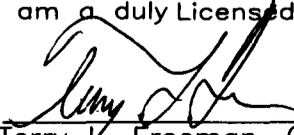
On 11 Sept 2015 placed an 1 inch by 30 inch aluminum tube with aluminum cap,
down 0.05 foot, on the new centerline County Road #49.



NOTE:
All bearings are true

Statement of evidence relative to this corner location is on the back of this page.

I hereby certify that this survey, plan or report was prepared by me or under my direct supervision and that I am a duly Licensed Land Surveyor under the laws of the State of Minnesota.


Terry E. Freeman, Cass County Surveyor
Date 9/16/15 MN License No. 21367

Page 1 of 2 A000615439

**Index No. N.0-03.0**Statement of Evidence**North Quarter corner of Section 19, Township 139 North, Range 28 West, 5th Principal Meridian.**

- April 1864 Johnson and Thornton, General Land Office Deputy Surveyors, notes for the subdivision of Township 139 North, Range 28 West, set a post for the original corner and referenced it as follows:
 4" Tamarack N 2° E 13 links (8.58 feet) 6" Tamarack S 78° E 7 links (4.62 feet)
 The above record is on file with the Minnesota Historical Society in St. Paul, Minnesota, copies are filed with the Cass County Highway Department, Surveyor's Office (CCHD/SO).
- Oct. 1919 B.F. Clark, LS 231, CCHD/SO, Survey Record, Book C, Record No. 434, page 326, on file in the CCHD/SO, states "Then went to the 1/4 S. bet. Sec. 18-19. Found a Tam. Post 5 ft. long 4 in. diam. Marked ¼ S. with a scribe iron with a Tam. Stump B.T. and Tam. Sapling marked B.T. ¼ S. the ¼ S. bet. 18-19. Witness trees." And "being satisfied this is the old gov't cor. I set an iron pipe with a wooden point in side the iron and drove the same in ground 6 ½ ft. for the ¼ S. cor. bet. Sec. 18-19." Lists the GLO witnesses as follows:
 6" Tamarack stump S 78° E 9.44 feet 4" Tamarack N 2° E 9.4 feet
- Dec. 1921 B.F. Clark, LS 231, CCHD/SO, County Resurvey Plat, on file in the Cass County Recorders Office, as Document Number 69797, indicates Iron Monument.
- Dec. 1926 Blind Lake Township Final Road Order, states a road "along quarter line to quarter corner along south line of section 18.
- 1938 Civilian Conservation Corps, personnel, Washburn Lake Book 12, page 23, on file in the Minnesota Department of Natural Resources, Outing Office, state at 2640' from east – set Approx ¼ cor.
- Aug. 1975 L. Mengis, technician, Cass County Highway Department(CCHD) S.A.P. 11-649-01, on file in the CCHD, plan indicate a corner position at station 217+08.3, 12 feet, more or less, north of planned centerline, in a drainage ditch to the south and fence line to the north.
- March 2003 B. Hippen and T. Anderson, technicians, records of the CCHD/SO, searched for corner in road, found no evidence of the subject corner.
- Sept. 2015 B. Hippen, technician, records of the CCHD/SO, set an aluminum Cass County monument at the obliterated position determined as noted in the 1919 resurvey at 2614.9 feet west of the recovered northeast corner of Section 19 on the centerline of County Road #49 and witnessed as follows:
 8" Tamarack N 40° E 112.70 feet 12" J. Pine N 80° W 271.96 feet
 10" Tamarack S 11° E 109.72 feet

The monument, recovered and established references for the position are shown on the face of this document.

Analysis of the recovered record data, field evidence and survey measurements, indicates that the monument set by CCHD/SO in 2015 is the accepted location of this corner.

County Coordinates (Cass County North)

Northing 116341.94

Easting 486742.66