



A000615240

OFFICE OF THE COUNTY RECORDER
CASS COUNTY, MINNESOTA
CERTIFIED, FILED, AND/OR
RECORDED ON

9/10/2015 1:01:42 PM

AS DOC #: A000615240

PAGES: 2

REC FEES: 0.00

KATHRYN M. NORBY
CASS COUNTY RECORDER

BY SR _____ Dep TX#: 125609

Page 1 of 2 A000615240

Twp 136 Rge 30 Index No. J.0-17.0

CERTIFICATE OF LOCATION OF GOVERNMENT CORNER

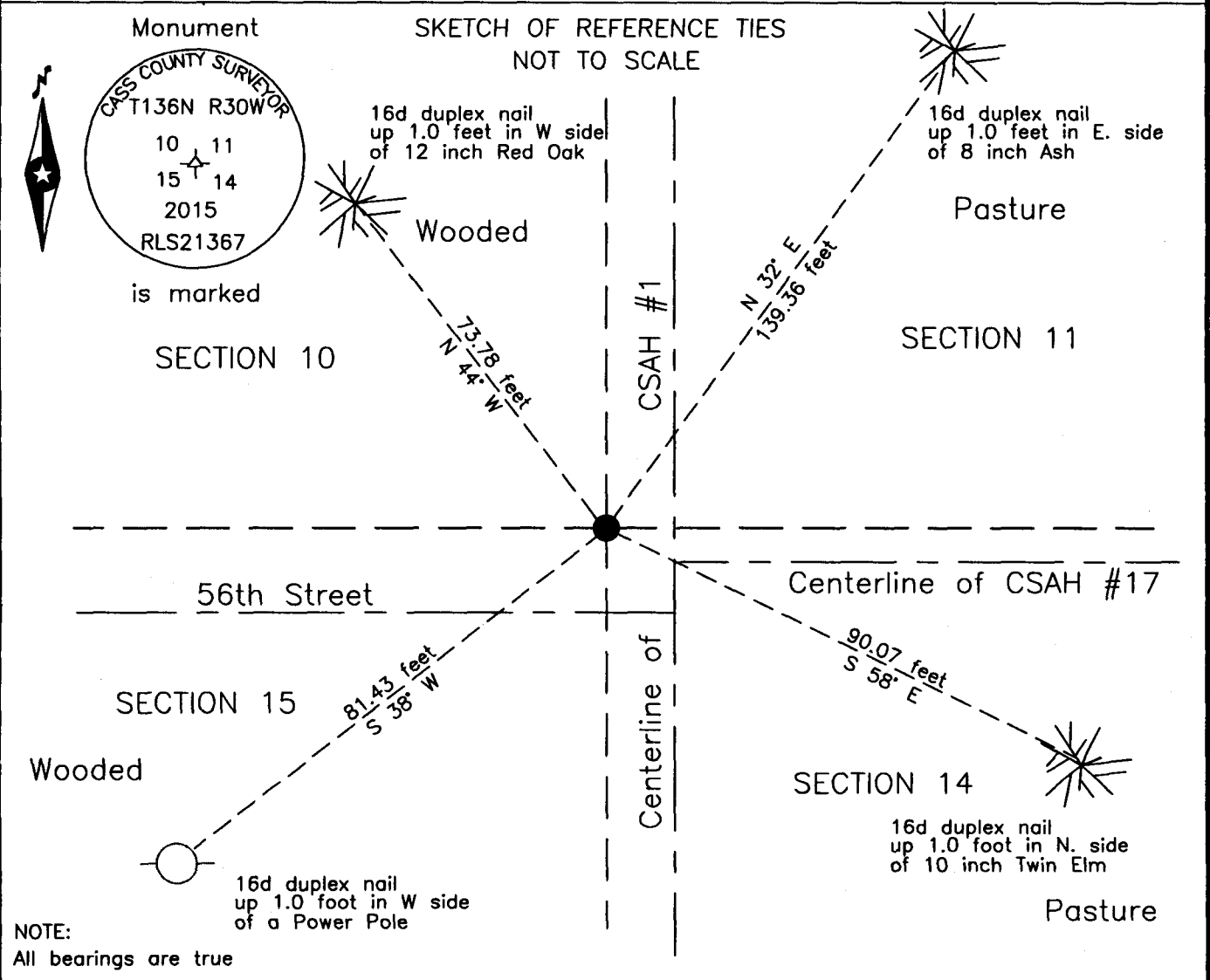
Northeast corner of Section 15, Township 136 N., Range 30 W., 5th P.M.
State of Minnesota, County of Cass

At the corner location shown on the sketch:

On 6 Aug 2014 found a 1.75 inch outside diameter iron pipe, in large stones,
down 7.0 feet, 1 foot± west of centerline of CSAH #1, 0.5 foot± north of CSAH #17.

left monument as found lowered monument removed monument (explain)


On 20 Aug. 2015 placed a 1 inch by 30 inch aluminum tube with aluminum cap
down 0.05 foot above found iron pipe, 1 foot± west of new centerline CSAH #1.



NOTE:
All bearings are true

Statement of evidence relative to this corner location is on the back of this page.

I hereby certify that this survey, plan or report was prepared by me or under my direct supervision and that I am a duly Licensed Land Surveyor under the laws of the State of Minnesota.


Terry L. Freeman, Cass County Surveyor
Date 9/9/15 MN License No. 21367

**Index No. J.0-17.0**Statement of Evidence**Northeast corner of Section 15, Township 136 North, Range 30 West, 5th Principal Meridian.**

- Aug. 1870 R. Cronk, General Land Office (GLO) Deputy Surveyor in the notes of the subdivision of Township 136 North, Range 30 West, set a post for the original corner and referenced it as follows:
 28" W. Pine S 27° W 75 links (49.50 feet) 16" W. Pine S 8° E 100 links (66.00 feet)
 30" W. Pine N 78° E 130 links (85.80 feet) 14" Oak N 26° W 125 links (82.50 feet)
 Said records are on file with the Minnesota Historical Society, St. Paul, Minnesota, copies are filed with the Cass County Highway Department, Surveyor's Office (CCHD/SO).
- Nov. 1914 C.D. Conzett, LS 428, Engineer, S. R. #80 Book 22, Shelf 3, page 53, on file in the CCHD/SO, indicates Approx. Sec. Cor. Used Spike in ground at station 1228+86.7, on center of Road to Pequot.
- Nov. 1916 Engineer, S. R. #80 Book 43, Shelf 5, page 9, on file in the CCHD/SO, indicates Sec. Cor. at station 1228+86.7, on centerline of Approach to Pequot.
- Circa 1916 C.J. White, LS 1054, C.D. Conzett, LS 428 and C.J. Barke, Engineers, Survey Record No. 332, Book B, page 474-475, State Rural Highway No. 80, on file in the CCHD/SO, indicates (Spike) corner at station 1228+86.7.
- Circa 1916 C.D. Conzett, LS 428, Engineer, Profile Book 001P, Shelf 2, page 21, on file in the CCHD/SO, indicates Approx. Sec. Cor.(Spike) at station 1228+86.7.
- May 1919 Maple Township Road Order, on file at the CCHD/SO, states "Beginning at the corner between sections 10, 11, 14 & 15, Twp 136, Range 30 thence running west two miles on the line between Section".
- Jan. 1920 E.B. Horst, LS 376, Deputy County Surveyor, Survey Record Number 430, Book C, page 251 on file in the CCHD/SO, states "I locate from State Rural Highway Notes and take following bearings:"
 8" Popple NE 65.3 ft 8" Tel. Pole SE 37.4 ft
- Aug. 1921 E.B. Horst, LS 376, Deputy County Surveyor, Curo Book 67, page 63, on file in the CCHD/SO, states "drive to Maple Twp. And set a 2" x 48" I.M. at cor. To secs. 10-11-14-15, level with top of State Road." On page 61 a pictorial shows the subject corner and lines to the South.
- Jan. 1927 J.M. Greene, Cass County Surveyor, Curo Book 62, page 86, on file in the CCHD/SO, indicates a Spike at 1228+86.7.
- Oct. 1929 Prudlo, C.A.R. #14, Book 164, Shelf 3, page 1, on file in the CCHD/SO, indicates Sec. Cor. Iron Pipe Inp. Beg. S.A.R. #1 N.W. Cor Sec. 14-136-30 and the following:
 4" Pop. NW 90.8 feet 8" Oak SW 76.6 feet
- Oct. 1940 J.W. Curo, LS 1428, Cass County Surveyor, Survey Record Number 573, Book D, page 247, on file in the CCHD/SO, states "we locate the true section corner which is marked by a 2 x 48 inch pipe which has been partly pulled up and twisted out of shape by the various road drags: We find this iron broken in two and by digging deep we find the bottom section which is 2 feet long." New witnesses as follows:
 12" Elm N 25° E 196.20 feet 10" W. Oak S 28°30' W 76.15 feet
 7" W. Birch S 56° E 123.70 feet 11" Twin Poplar N 75°30' W 110.00 feet
- March 1955 D. Cole, LS 1286, Cass County Engineer, C.S.A.H. No. 1, State Project 11-508-06, on file in the Cass County Highway Department (CCHD), indicates Corner assumed on centerline and centerline S.A.R. 17 to east at P.I. station 105+34.1.
- Jan. 1985 T. Freeman, CCHD/SO technician, records of the CCHD/SO, found a Masonry nail at P.I. and the following witnesses:
 12" Elm N 25° E 196.20 feet 7" W. Birch S 56° E 123.70 feet
- May 2012 B. Hippen, technician, records of the CCHD/SO, found a 15 inch Birch snag at the 1940 bearing and distance from the intersection of County Roads #1 and #17.
- Aug. 2014 B. Hippen, technician and P. Swentkofske, CCHD equipment operator, records of the CCHD/SO, prior to reconstruction of CSAH #1, excavated a 6 foot east-west by 10 foot north-south area based on the 1940 bearing and distance from the Birch snag. The dig was 7 feet deep to a 1.75 inch outside diameter iron pipe in a group of large stones and witnessed as follows:
 8" Ash N 32° E 139.36 feet 10" Twin Elm S 58° E 90.07 feet
 12" Red Oak N 44° W 73.78 feet Power Pole S 38° W 81.43 feet
- Aug. 2015 B. Hippen, technician, records of the CCHD/SO, set an aluminum Cass County monument over the recovered iron pipe after County Road construction was completed, down 0.05 foot, 1 foot more or less, west of new centerline of CSAH #1, 0.5 foot, north of centerline of CSAH #17. The monument, recovered and established references for the position are shown on the face of this document.

Analysis of the recovered record data, field evidence and survey measurements, indicates that the monument recovered by CCHD/SO in 2015 is the accepted location of this corner.

**County Coordinates (Cass County South)
 Northing 262362.11 Easting 507836.59**