



A000615237

OFFICE OF THE COUNTY RECORDER
CASS COUNTY, MINNESOTA
CERTIFIED, FILED, AND/OR
RECORDED ON

9/10/2015 1:01:39 PM

AS DOC #: A000615237

PAGES: 2

REC FEES: 0.00

KATHRYN M. NORBY
CASS COUNTY RECORDER

BY SR _____ Dep TX#: 125609

Page 1 of 2
A000615237

Twp 136 Rge 30 Index No. C.0-17.0

CERTIFICATE OF LOCATION OF GOVERNMENT CORNER

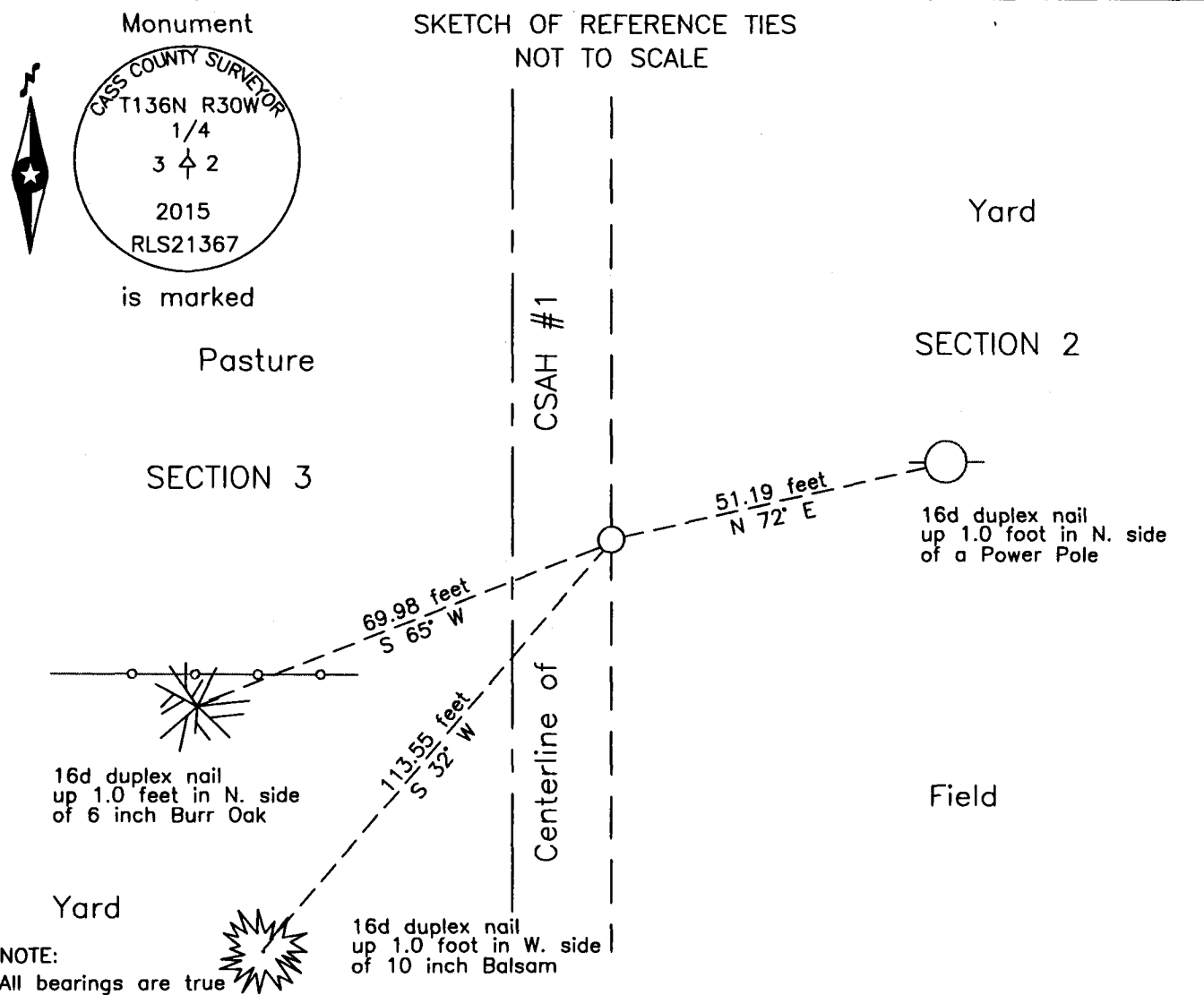
East Quarter corner of Section 3, Township 136 N., Range 30 W., 5th P.M.
State of Minnesota, County of Cass

At the corner location shown on the sketch:

On _____ found _____

left monument as found lowered monument removed monument (explain)

On 25 Aug. 2015 placed a 1 inch by 20 inch aluminum tube with aluminum cap down 0.05 foot, 6 feet± east of new centerline CSAH #1 and 24 feet± north of fence.



NOTE:
All bearings are true

Statement of evidence relative to this corner location is on the back of this page.

I hereby certify that this survey, plan or report was prepared by me or under my direct supervision and that I am a duly Licensed Land Surveyor under the laws of the State of Minnesota.

Terry L. Freeman, Cass County Surveyor
Date 9/9/15 MN License No. 21367



Index No. C.0-17.0

Statement of Evidence

East Quarter corner of Section 3, Township 136 North, Range 30 West, 5th Principal Meridian.

- Aug. 1870 R. Cronk, General Land Office (GLO) Deputy Surveyor in the notes of the subdivision of Township 136 North, Range 30 West, set a post for the original corner and referenced it as follows:
 10" J. Pine N 54° E 16 links (10.56 feet) 11" J. Pine N 50° W 19 links (12.54 feet)
 Said records are on file with the Minnesota Historical Society, St. Paul, Minnesota, copies are filed with the Cass County Highway Department, Surveyor's Office (CCHD/SO).
- June 1912 Maple Township Road Order, on file at the CCHD/SO, states" running North one mile between Sections 2 & 3 to connect with a road running on the line between Twps 136 & 137 R. 30."
- Oct. 1912 A.W. Moulster, LS 967, Survey on S.R. #4, Ditch Books, Shelf 1, Book 11, page 15, on file in the CCHD/SO, indicates ¼ Cor. at 26+31.9.
- Nov. 1914 C.J. White, LS 1054, S.R.H. No. 80, Transit Book #1, Ditch Books, Shelf 3, Book 22, page 57, on file in the CCHD/SO, states "1/4 Cor. 2" Iron pipe" at Station 1308+32.2.
- Circa 1916 S.R.H. #80, Profile Book #1, on file in the CCHD/SO, Ditch Books, Shelf 2, Book 1 P, page 23, indicates ¼ Cor. at station 1308+32.2 for the subject corner.
- Circa 1916 State Rural Highway No. 80, Survey Record No. 332, Book B, page 474, on file in the CCHD/SO, indicates a 2" Iron Pipe at station 1308+32.2 for the subject corner
- Jan. 1927 J.M. Greene, Cass County Surveyor, Curo Book 62, pages 86, on file in the CCHD/SO, indicates 2" I.M. at Station 1308+32.2 for the subject corner.
- March 1955 D. Cole, LS 1286, Cass County Highway Department (CCHD), S.A.P. 11-508-06, on file in the CCHD, plan indicates assumed corner on centerline point of intersection, at Station 184+82.8, on fence lines east and west and witnesses as follows:

F.E. Post	N W	48.5 feet	Power Pole	E N E	38.0 feet
5" Birch	S W	76.3 feet			
- Dec. 2002 D.S. Landecker, LS 17008, Sketch and Description, copy on file in the CCHD/SO, indicates monument.
- Dec. 2012 P.A. Trottier, LS 41002, Certificate of Survey for Swenson, copy on file in the CCHD/SO, indicates a PK nail found at the subject corner.
- March 2014 B. Hippen, technician, records of the CCHD/SO, prior to reconstruction of CSAH # 1, searched location of the subject corner, no evidence of corner or witnesses was found.
- Aug. 2015 B. Hippen, technician, records of the CCHD/SO, set an aluminum Cass County monument after County Road construction was completed, at the proportionate position between the recovered northeast and reestablished southeast corners of section 3, 6 feet, more or less, east of the new centerline of CSAH #1 and 24 feet, more or less, north of fence line to west and witnessed as follows:

10" Balsam	S 32° W	113.55 feet	Power Pole	N 72° E	51.19 feet
6" R. Oak	S 65° W	69.98 feet			

The monument, recovered and established references for the position are shown on the face of this document.

Analysis of the recovered record data, field evidence and survey measurements, indicates that the monument set by the CCHD/SO in 2015 is the accepted location of this corner.

County Coordinates (Cass County South)

Northing 270330.96

Easting 507829.96