



A000615118

OFFICE OF THE COUNTY RECORDER  
CASS COUNTY, MINNESOTA  
CERTIFIED, FILED, AND/OR  
RECORDED ON

9/3/2015 10:28:45 AM

AS DOC #: A000615118

PAGES: 3

REC FEES: 0.00

KATHRYN M. NORBY  
CASS COUNTY RECORDER

BY SR \_\_\_\_\_ Dep TX#: 125477

Page 1 of 3  
A000615118

Twp 137 Rge 30 Index No. Z.0-21.0

### CERTIFICATE OF LOCATION OF GOVERNMENT CORNER

Std Southeast corner of Section 35, Township 137 N., Range 30 W., 5th P.M.

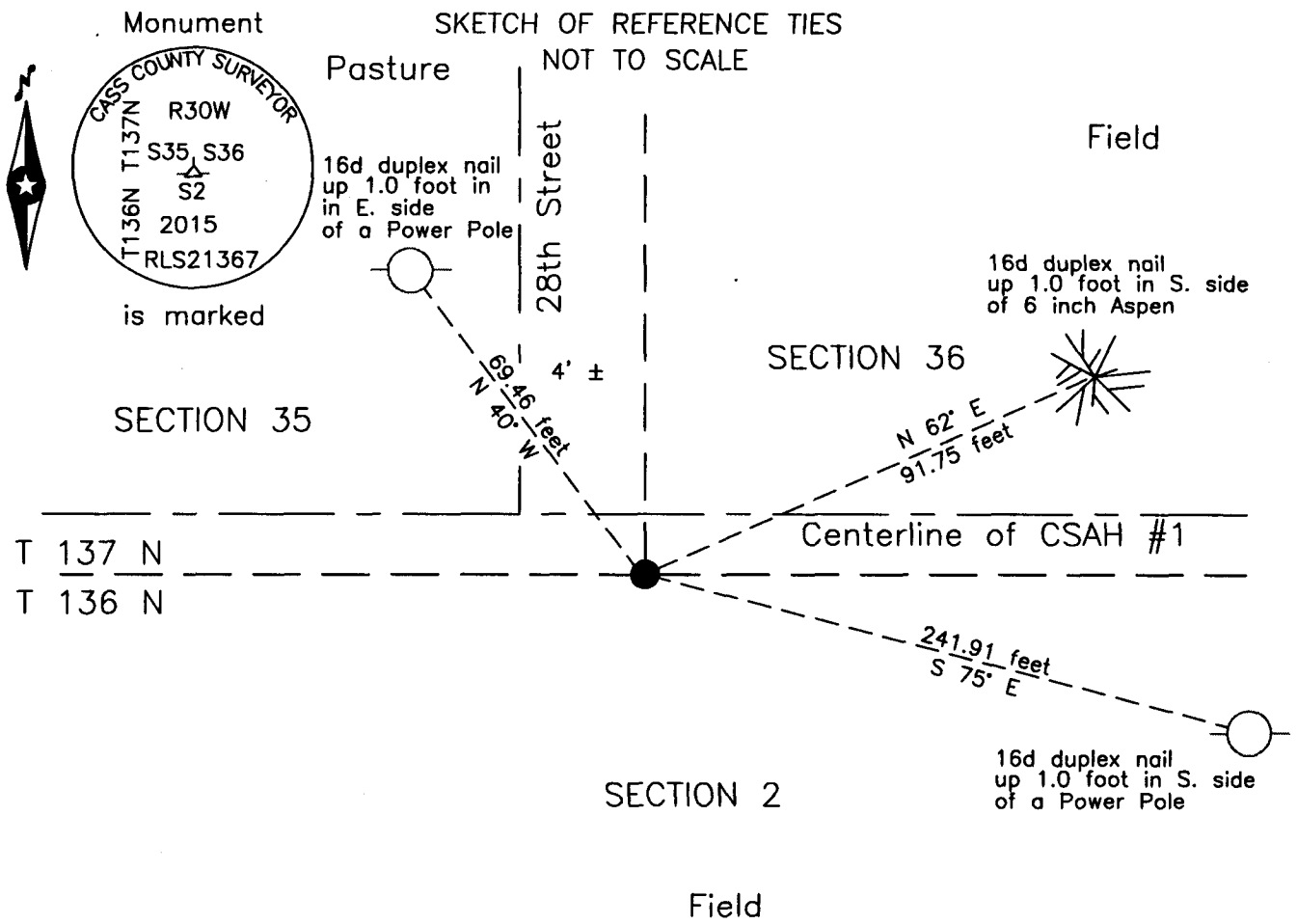
State of Minnesota, County of Cass

At the corner location shown on the sketch:

On 11 Aug 2014 found an 8 inch by 8 inch concrete monument, down 5.5 feet,  
2 feet± south of centerline of CSAH #1, 4 feet± east of 28th Street.

left monument as found     lowered monument     removed monument (explain)

On 25 Aug 2015 placed a 1 inch by 30 inch aluminum tube with aluminum cap  
down 0.05 foot, 2.5 feet± south of new centerline of CSAH #1.



NOTE:  
All bearings are true

Statement of evidence relative to this corner location is on the back of this page.

I hereby certify that this survey, plan or report was prepared by me or under my direct supervision and that I am a duly Licensed Land Surveyor under the laws of the State of Minnesota.

Terry L. Freeman, Cass County Surveyor  
Date 9/2/15 MN License No. 21367

**Index No. Z.0-21.0**Statement of Evidence**Standard Southeast corner of Section 35, Township 137 North, Range 30 West, 5th Principal Meridian.**

- April 1858 E.D. Atwater, General Land Office Deputy Surveyor set a post for the original corner in the survey of the Ninth Standard Parallel of Range 30 West and referenced it as follows:  
 14" W. Birch N 33 1/2° W 31 links (20.46 feet) 12" Pine N 2 1/2° E 50 links (33.00 feet)  
 Said records are on file with the Minnesota Historical Society, St. Paul, Minnesota, copies are filed with the Cass County Highway Department, Surveyor's Office (CCHD/SO).
- April 1910 J.W. Curo, LS 1428, Curo Book 91, page 27, on file in the CCHD/SO, states "We set the hub for true corner from a pine stump which Mr. John O. claims was marked 11 or 12 years ago when B.B. Bartlett was there.
- May 1911 A.W. Moulster, LS 967, Survey Record No. 291, Book B, page 259 and Curo Book 49-1, page 106, on file in the CCHD/SO, states "I found the 8"x 8"x 36" cement post set by Curo from the Pine bearing tree."
- Jan. 1912 A.W. Moulster, LS 967, State Road survey, on file in the CCHD/SO, indicates a Gov't corner found and notes an 8"x 8"x 36" cement stone at the subject corner.
- Nov. 1914 C.J. White, LS 1054, S.R.H. No. 80, Transit Book #1, Ditch Books, Shelf 3, Book 22, page 60, on file in the CCHD/SO, indicates a Concrete Mon. at Station 1353+79.2.
- Sept. 1916 F.N. Molyneux, S.R.H. No. 80, Book #3, Ditch Books, Shelf 5, Book 14, page 109, on file in the CCHD/SO, indicates a Concrete Mon. at Station 1353+79.2 and notes witnesses as follows:  
 Hub N E 45.0 feet B.M. Stump South 35.2 feet  
 Hub N W 54.2 feet
- Circa 1916 C.D. Conzett, LS 428, C.J. White, LS 1054 and C.J. Barke, Engineers, Survey Record No. 332, Book B, page 474, State Rural Highway No. 80, on file in the CCHD/SO, indicates corner at station 1353+79.2 and states "Concrete Mon."
- Circa 1916 S.R.H. #80, Profile Book #1, on file in the CCHD/SO, Ditch Books, Shelf 2, Book 1 P, page 24, indicates a Con. Mon. at station 1353+79.2 for the subject corner
- May 1917 E.B. Horst, LS 376, Survey Record No. 358, Book B, page 259 and Curo Book 62, pages 88 and 94 and Curo Book 90, page 64, on file in the CCHD/SO, states "an 8"x 8" cement monument previously established by County Surv'r John W. Curo"
- Jan. 1927 J.M. Greene, Cass County Surveyor, Curo Book 62, pages 86, on file in the CCHD/SO, indicates 8"x 8"x 36" Cem Mon. at the subject corner.
- March 1955 D. Cole, LS 1286, Cass County Highway Department (CCHD), S.A.P. 11-508-06, on file in the CCHD, plan indicates assumed corner on centerline at intersection with Twp. Rd., at Station 227+64.4 and witnessed as follows:  
 Fe. Post N W 57.0 feet P. Pole South 35.0 feet
- Oct. 1977 R.F. Schneider, LS 5740, line survey File 77-766, copy on file in the CCHD/SO, indicate a position for the subject corner.
- Dec. 2012 P.A. Trottier, LS 41002, Certificate of Survey for Swenson, copy on file in the CCHD/SO, indicates a PK nail found at the subject corner.
- July 2014 B. Hippen, technician, records of the CCHD/SO, found a 2.25 inch outside diameter iron pipe with plumbers cap, down 0.5 foot, 2 feet, more or less, south of centerline of CSAH #1 and 4 feet, more or less, west of centerline of 28<sup>th</sup> Avenue, remove monument prior to construction and witnessed as follows:  
 Power Pole S 78° E 248.73 feet 6" Aspen N 61° E 98.50 feet  
 Power Pole N 32° W 68.32 feet
- Aug. 2014 B. Hippen, technician and C. Reynolds, CCHD equipment operator, records of the CCHD/SO, prior to reconstruction of CSAH #1, excavated a 10 foot east-west by 10 foot north-south area based on centerline of 28<sup>th</sup> Avenue and centerline of CSAH #1. The dig was 6 feet deep to an 8 inch by 8 inch concrete monument, top has been broken off, down 5.5 feet, 2 feet, more or less, south of centerline of CSAH #1 and 4 feet, more or less. East of centerline of 28<sup>th</sup> Avenue. This monument is N 87° E, 7.44 feet from the 2.25 inch iron pipe and witnessed as follows:  
 Power Pole S 75° E 241.91 feet 6" Aspen N 62° E 91.75 feet  
 Power Pole N 40° W 69.46 feet
- Aug. 2015 B. Hippen, technician, records of the CCHD/SO, set an aluminum Cass County monument above the concrete monument, after County Road construction was completed, down 0.05 foot, 2.5 feet, more or less, south of the new centerline of CSAH #1.

The monument, recovered and established references for the position are shown on the face of this document.

**Analysis of the recovered record data, field evidence and survey measurements, indicates that the concrete monument found by the CCHD/SO in 2015 is the correct perpetuation of this corner.**



**Index No. Z.0-21.0**

**County Coordinates (Cass County South)**

**Northing 273224.19**

**Easting 509419.33**