



A000615113

OFFICE OF THE COUNTY RECORDER
CASS COUNTY, MINNESOTA
CERTIFIED, FILED, AND/OR
RECORDED ON

9/3/2015 10:28:40 AM

AS DOC #: A000615113

PAGES: 2

REC FEES: 0.00

KATHRYN M. NORBY
CASS COUNTY RECORDER

BY SR _____ Dep TX#: 125477

Page 1 of 2 A000615113

Twp 137 Rge 30 Index No. R.0-03.0

CERTIFICATE OF LOCATION OF GOVERNMENT CORNER

North Quarter corner of Section 30, Township 137 N., Range 30 W., 5th P.M.
State of Minnesota, County of Cass

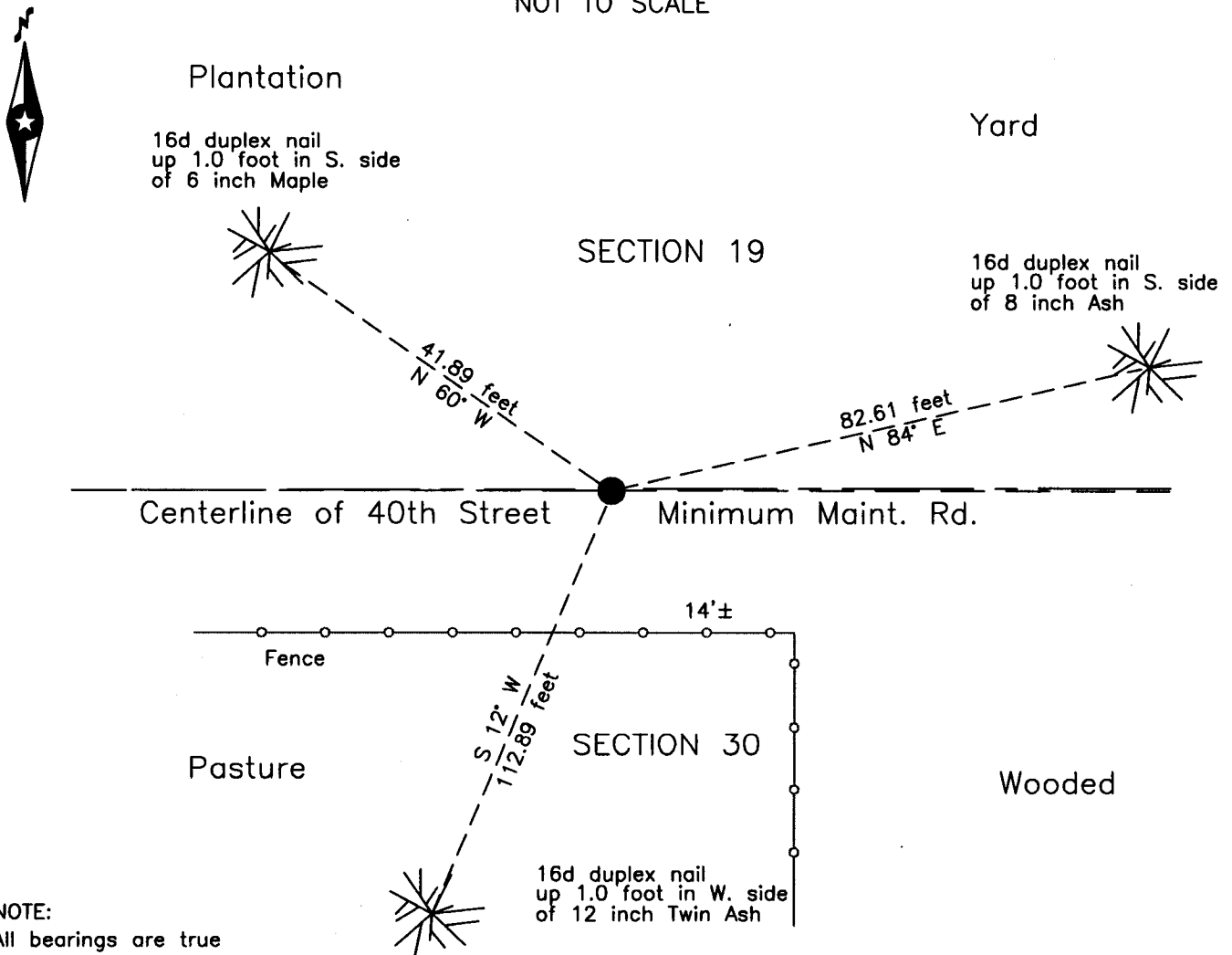
At the corner location shown on the sketch:

On 14 April 2015 found 0.2 foot of the base of an 8 inch concrete cylinder,
down 1.0 foot, on centerline of 40th Street, 14 feet±, west of fence line south.

left monument as found lowered monument removed monument (explain)

On 27 Aug 2015 placed a 1.25 inch outside diameter iron pipe, capped RLS 21367
down 0.3 foot, at location of concrete cylinder.

SKETCH OF REFERENCE TIES
NOT TO SCALE



NOTE:
All bearings are true

Statement of evidence relative to this corner location is on the back of this page.

I hereby certify that this survey, plan or report was prepared by me or under my direct supervision and that I am a duly Licensed Land Surveyor under the laws of the State of Minnesota.

Terry L. Freeman, Cass County Surveyor

Date 9/2/15 MN License No. 21367



Statement of Evidence

North Quarter corner Section 30, Township 137 North, Range 30 West, 5th Principal Meridian.

Oct. 1870 R. Cronk, General Land Office (GLO) Deputy Surveyor, notes for the subdivision of Township 137 North, Range 30 West, set a post for the original corner and referenced it as follows:
6" Spruce N 8° E 42 links (27.72 feet) 8" Aspen S 17° E 60 links (39.60 feet)
The above record is on file with the Minnesota Historical Society in St. Paul, Minnesota, copies are filed with the Cass County Highway Department, Surveyor's Office (CCHD/SO).

May 1916 E.B. Horst, LS 376, Deputy County Surveyor, Survey Record No. 320, Book B, page 405 and Curo book 64, page 34 and 36, on file in the CCHD/SO, states "1/4 cor between secs 19 & 30 at Sta 7934.58 ft. W goes N 91.23 ft." "Then states "make permanent cement corners we make them 8 in. in diameter by 3 ft. long putting a 4 in. stake in center for true point." Notes indicate this was set at the subject corner.

April 2015 B. Hippen, technician and C. Reynolds, CCHD equipment operator, records of the CCHD/SO, excavated a 6 foot north-south by 10 foot east-west area based on computed 1916 position. The dig was 1.5 foot deep, found the base of 8 inch concrete cylinder, only the bottom 0.2 foot remaining, down 1.0 foot. Set 60d spike along side.

Aug. 2015 B. Hippen, technician, records of the CCHD/SO, replaced concrete monument with a 1.25 inch outside diameter iron pipe, capped RLS 21367, down 0.3 foot, with concrete remains on the west side, on centerline 40th Street, now a minimum maintenance road and witnessed as follows:
12" Twin Ash S 12° W 112.89 feet 8" Ash N 84° E 82.61 feet
6" Maple N 60° W 41.89 feet

The monument, recovered and established references for the position are shown on the face of this document.

Analysis of the recovered record data, field evidence and survey measurements, indicates that the monument set by the CCHD/SO in 2015 is the accepted location of this corner.

County Coordinates (Cass County South)

Northing 283774.62

Easting 485526.88