

I HEREBY CERTIFY THAT THIS DOCUMENT AND THE DATA CONTAINED HEREIN WAS PREPARED BY ME OR UNDER MY DIRECT SUPERVISION.



A000613593

OFFICE OF THE COUNTY RECORDER  
CASS COUNTY, MINNESOTA  
CERTIFIED, FILED, AND/OR  
RECORDED ON

7/16/2015 10:38:23 AM

AS DOC #: A000613593

PAGES: 2

REC FEES: 0.00

KATHRYN M. NORBY  
CASS COUNTY RECORDER

BY SR \_\_\_\_\_ Dep TX#: 124298

Robert W. Murray 7-9-15  
ROBERT W. MURRAY DATE

LICENSE NO. 15483

- LAND SURVEYOR
- PROFESSIONAL ENGINEER
- COUNTY SURVEYOR
- COUNTY ENGINEER

NAD 1983 (1996) CASS COUNTY NORTH ZONE COORDINATES  
N= 321537.093 E= 390265.436 US SURVEY FT  
(COORDINATES ARE SHOWN AS INFORMATION ONLY, SUBJECT TO VERIFICATION)

# CERTIFICATE OF LOCATION OF GOVERNMENT CORNER

INDEX NO. A-3, NORTH QUARTER CORNER OF SECTION 06, TOWNSHIP 145, RANGE 31, 5TH P.M.  
STATE OF MINNESOTA, COUNTY OF CASS

AT THE CORNER LOCATION SHOWN ON THE SKETCH:

ON 04/09/2013 FOUND A(N) 20 INCH CAST IRON MONUMENT DOWN 9 INCHES BELOW GROUND

LEFT MONUMENT AS FOUND,  LOWERED MONUMENT,  REMOVED MONUMENT (EXPLAIN)

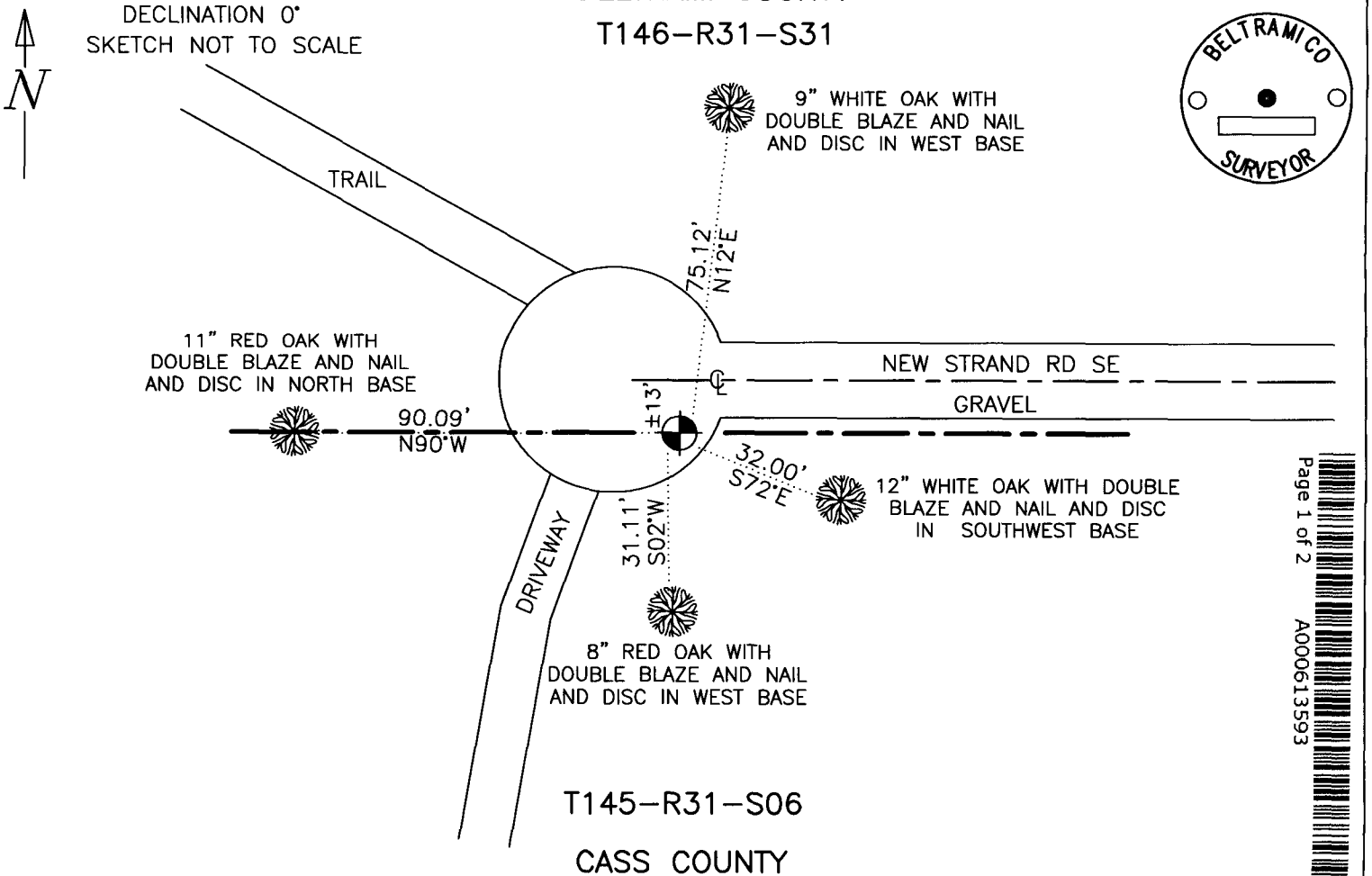
ON \_\_\_\_\_ DATE \_\_\_\_\_ PLACED A(N) \_\_\_\_\_

## SKETCH OF REFERENCE TIES

BELTRAMI COUNTY

MONUMENT MARKED:

T146-R31-S31



Page 1 of 2  
A000613593

T145-R31-S06

CASS COUNTY

STATEMENT OF EVIDENCE RELATIVE TO THIS CORNER LOCATION IS ON BACK OF PAGE

**STATEMENT OF EVIDENCE:**

NORTH QUARTER CORNER OF SECTION 06, TOWNSHIP  
145 NORTH, RANGE 31 WEST OF THE 5TH PRINCIPAL  
MERIDIAN CASS COUNTY, MINNESOTA

In 1875, (Vol. 130 Pg. 887) the Original Public Land Survey was run by B. C. Baldwin. A post was set to mark the corner and two bearing trees were recorded as accessories; a 16 inch Norway Pine South 49 degrees West 190 links and a 3 inch Aspen North 84 degrees East 10 links.

In 1932, (Roll 69262) H. Craig, United States Cadastral Surveyor, made a dependent resurvey of Township 146 Range 31. He found a 2 inch galvanized pipe with cap 12 inches above ground surface marking the corner and the remains of two bearing trees; a stump hole North 87 degrees East 10 links and an 18 inch Norway Pine stump South 49 ¼ degrees West 188 links. He marked the cap of the 2 inch galvanized pipe with cap 12 inches above ground surface and recorded two additional bearing trees; a 5 inch Burr Oak North 28 ¼ degrees East 68 links and a 6 inch Red Oak South 24 degrees East 26 links.

On November 21, 1983, (FB 830015) G. Coulombe, D. Graber and A. Larson, of the Beltrami County Remonumentation Crew, searched for Public Land Survey Corners in this area. They found a 2 inch by 4 inch iron pipe, leaning towards the northwest, marking the corner. They removed the leaning pipe and set a 20 inch Beltrami County cast iron monument down 7 inches below road surface to mark the corner and recorded four bearing trees; a 12 inch White Oak North 45 degrees East 53.08 feet with scribe, spike and disc, a 5 inch White Oak South 47 degrees East 36.89 feet with scribe, spike and disc, a 6 inch Red Oak South 48 degrees West 29.21 feet with scribe, spike and disc and a 6 inch Red Oak North 29 degrees West 15.12 feet with CLT, scribe, spike and disc.

On April 11, 1984, G. E. R. Coulombe, County Surveyor, prepared a Certificate of Corner Location for this Public Land Survey corner with the following statement: "An analysis of the above data indicates the location of this Public Land Survey Corner has been perpetuated by the iron pipe recorded by Craig in 1932."

On April 9, 2013, (FB 130081) P. M. Hennen and S. J. Deleo, of Kramer Leas Deleo (KLD), searched for Public Land Survey Corners in this area. They found a 20 inch cast iron monument down 9 inches below road surface marking the corner. They recorded four bearing trees; a 12 inch White Oak South 72 degrees East 32.00 feet with double blaze and nail and disc in Southwest base, a 9 inch White Oak North 12 degrees East 75.12 feet with double blaze and nail and disc in West base, an 8 inch Red Oak South 02 degrees West 31.1 feet with double blaze and nail and disc in West base and an 11 inch Red Oak North 90 degrees West 90.09 feet with double blaze and nail and disc in North base.

For additional information contact the Beltrami County Surveyor's Office in Bemidji, Minnesota.