



A000611898

OFFICE OF THE COUNTY RECORDER
CASS COUNTY, MINNESOTA
CERTIFIED, FILED, AND/OR
RECORDED ON

5/21/2015 9:43:25 AM

AS DOC #: A000611898

PAGES: 2

REC FEES: 0.00

KATHRYN M. NORBY
CASS COUNTY RECORDER

BY SR Dep TX#: 122921

Twp 137 Rge 30 Index No. T.0-05.0

CERTIFICATE OF LOCATION OF GOVERNMENT CORNER

East Quarter corner of Section 30, Township 137 N., Range 30 W., 5th P.M.
State of Minnesota, County of Cass

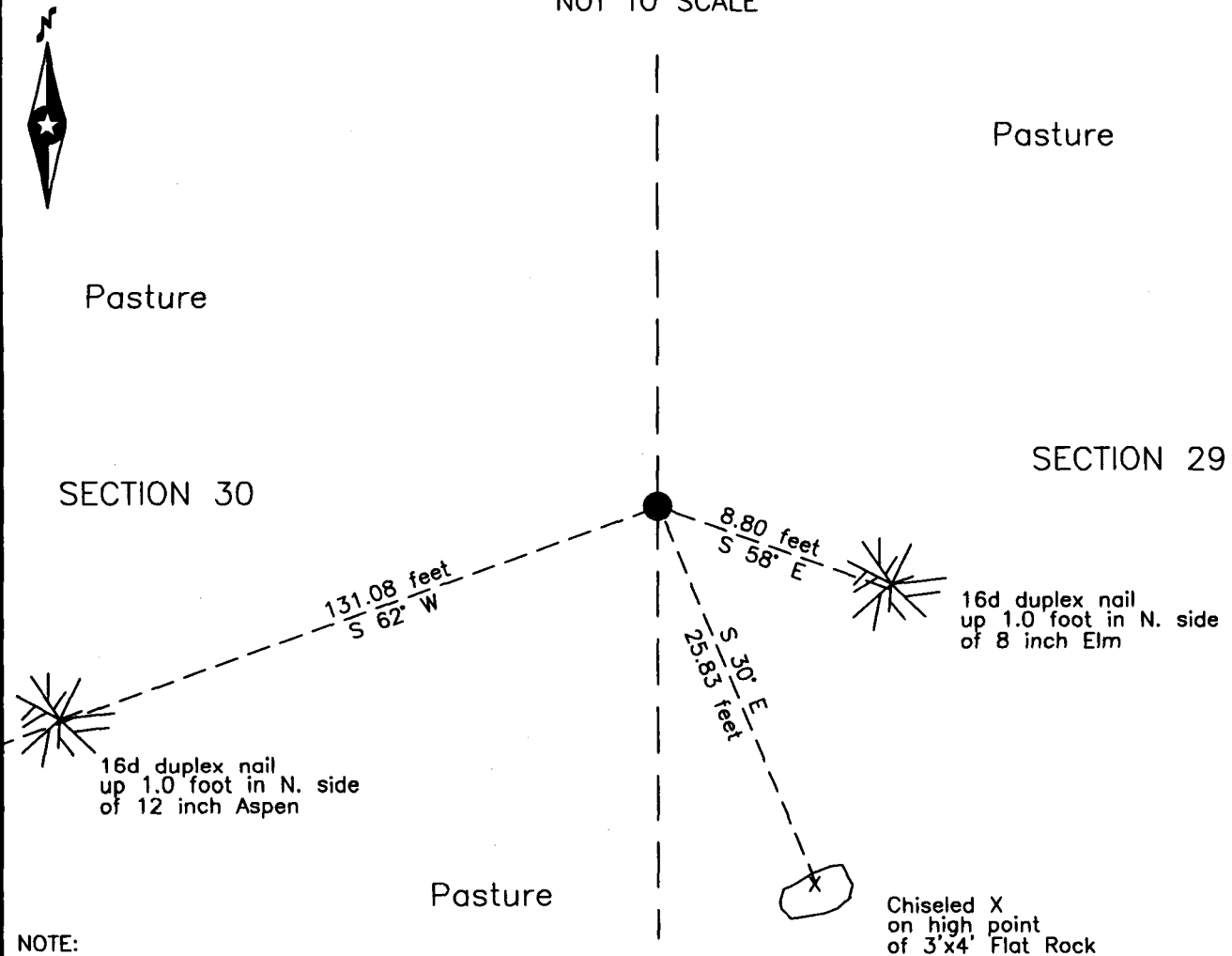
At the corner location shown on the sketch:

On 16 April 2015 found an 8 inch concrete cylinder, top broken off, down 0.9 foot.

left monument as found lowered monument removed monument (explain)

On 16 April 2015 placed a 1.25 inch outside diameter iron pipe, capped RLS 21367
up 0.5 foot, on top of concrete monument.

SKETCH OF REFERENCE TIES
NOT TO SCALE



NOTE:
All bearings are true

Statement of evidence relative to this corner location is on the back of this page.

I hereby certify that this survey, plan or report was prepared by me or under my direct supervision and that I am a duly Licensed Land Surveyor under the laws of the State of Minnesota.

Terry L. Freeman, Cass County Surveyor
Date 5/20/15 MN License No. 21367

Page 1 of 2
A000611898





Statement of Evidence

East Quarter corner Section 30, Township 137 North, Range 30 West, 5th Principal Meridian.

Oct. 1870 R.Cronk, General Land Office (GLO) Deputy Surveyor, notes for the subdivision of Township 137 North, Range 30 West, set a post for the original corner and referenced it as follows:
12" W. Pine S 40° E 42 links (27.72 feet) 7" Maple N 20 1/2° W 74 links (48.84 feet)
The above record is on file with the Minnesota Historical Society in St. Paul, Minnesota, copies are filed with the Cass County Highway Department, Surveyor's Office (CCHD/SO).

May 1916 E.B. Horst, LS 376, Deputy County Surveyor, Survey Record No. 320, Book B, page 405 and Curo Book 64, page 35 and 36, on file in the CCHD/SO, indicates corner position midway and on line between section corners, Then states "make permanent cement corners we make them 8 in. in diameter by 3 ft. long putting a 4 in. stake in center for true point." Notes indicate this was set at the subject corner.

April 2015 B. Hippen, technician, records of the CCHD/SO, found an 8 inch concrete cylinder, top broken off, down 0.9 foot, set a 1.25 inch outside diameter iron pipe, capped RLS 21367, up 0.5 foot on top of concrete monument and witnessed as follows:

8" Elm S 58° E 8.80 feet X on 4'x3' Flat Rock S 30° E 25.83 feet
12" Aspen S 62° W 131.08 feet

The monument, recovered and established references for the position are shown on the face of this document.

Analysis of the recovered record data, field evidence and survey measurements, indicates that the monument recovered by the CCHD/SO in 2015 is the accepted location of this corner.

County Coordinates (Cass County South)

Northing 281130.83

Easting 488200.98