



A000611897

OFFICE OF THE COUNTY RECORDER
CASS COUNTY, MINNESOTA
CERTIFIED, FILED, AND/OR
RECORDED ON

5/21/2015 9:43:24 AM

AS DOC #: A000611897

PAGES: 2

REC FEES: 0.00

KATHRYN M. NORBY
CASS COUNTY RECORDER

BY SR _____ Dep TX#: 122921

Twp 137 Rge 30 Index No. R.0-05.0

CERTIFICATE OF LOCATION OF GOVERNMENT CORNER

Northeast corner of Section 30, Township 137 N., Range 30 W., 5th P.M.

State of Minnesota, County of Cass

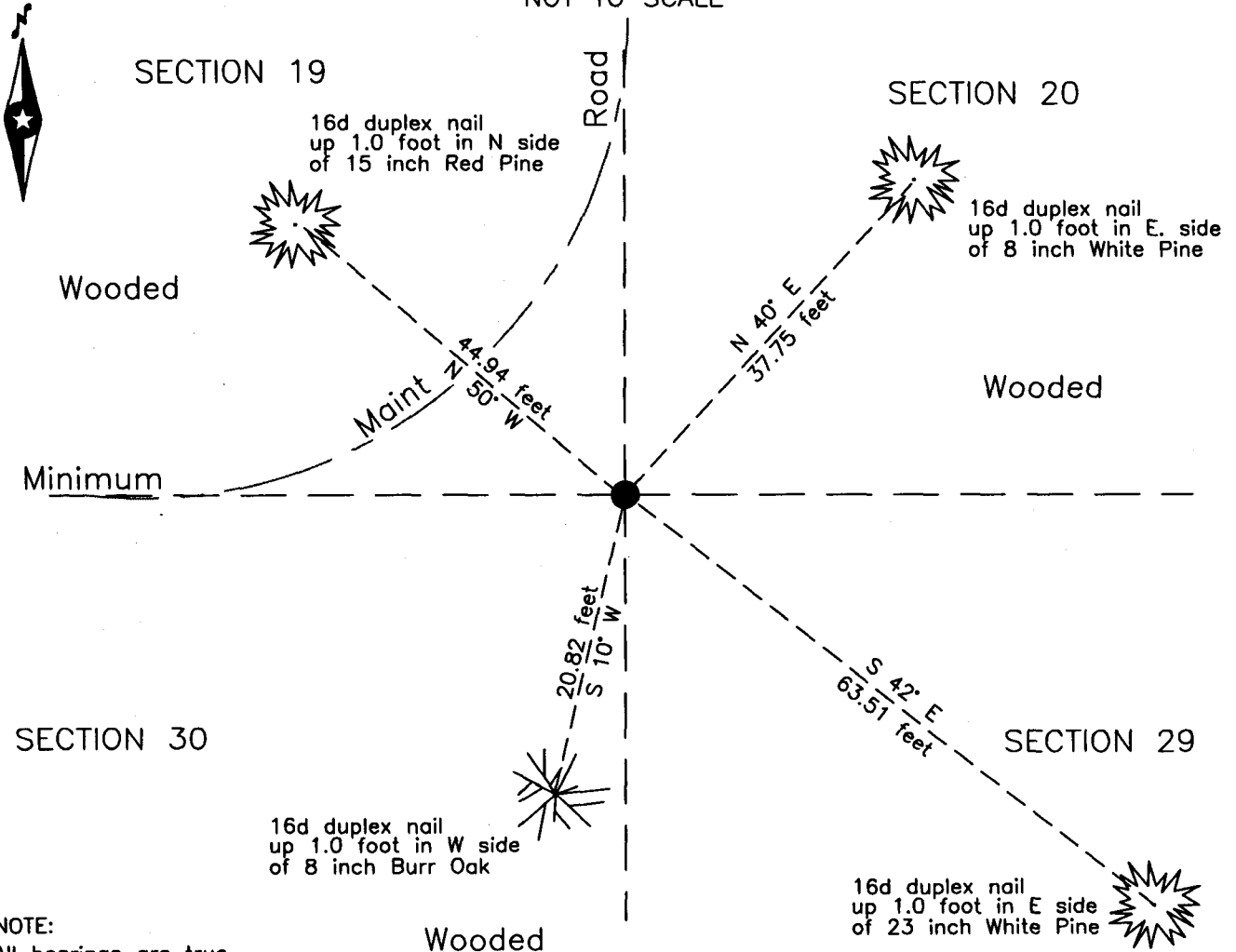
At the corner location shown on the sketch:

On 14 April 2015 found an 8 inch concrete cylinder, top broken off, down 0.2 foot,
at point of intersection of minimum maintenance road.

left monument as found lowered monument removed monument (explain)

On 16 April 2015 placed a 0.5 inch rebar in center of concrete monument.

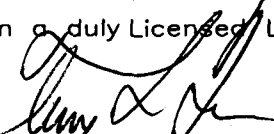
SKETCH OF REFERENCE TIES
NOT TO SCALE



NOTE:
All bearings are true

Statement of evidence relative to this corner location is on the back of this page.

I hereby certify that this survey, plan or report was prepared by me or under my direct supervision and that I am a duly Licensed Land Surveyor under the laws of the State of Minnesota.


Terry L. Freeman, Cass County Surveyor
Date 5/20/15 MN License No. 21367

Page 1 of 2
A000611897





Statement of Evidence

Northeast corner Section 30, Township 137 North, Range 30 West, 5th Principal Meridian.

Oct. 1870 R. Cronk, General Land Office (GLO) Deputy Surveyor, notes for the subdivision of Township 137 North, Range 30 West, set a post for the original corner and referenced it as follows:
 17" N. Pine N 50° E 26 links (17.16 feet) 20" N. Pine S 31 1/2° E 70 links (46.20 feet)
 18" N. Pine S 76° W 190 links (125.40 feet) 8" W. Pine N 42° W 120 links (79.20 feet)
 The above record is on file with the Minnesota Historical Society in St. Paul, Minnesota, copies are filed with the Cass County Highway Department, Surveyor's Office (CCHD/SO).

May 1916 E.B. Horst, LS 376, Deputy County Surveyor, Survey Record No. 320, Book B, page 405 and Curo book 64, page 28, 33, 36 and 37, on file in the CCHD/SO, running west states "We look for B.T's in this vicinity but every thing is burned out." Later at proportionate position "I drive New post at above pt for sec cor." Then states "make permanent cement corners we make them 8 in. in diameter by 3 ft. long putting a 4 in. stake in center for true point." Notes indicate this was set at the subject corner.

April 2002 B. Hippen, technician, records of the CCHD/SO, search corner position at PI of township road, found a spike near this position.

April 2015 B. Hippen, technician and C. Reynolds, CCHD equipment operator, records of the CCHD/SO, excavated a 6 foot north-south by 12 foot east-west area based on centerline intersection of 44th Avenue and centerline of 40th Street, both are now a minimum maintenance road. The dig was 1.5 foot deep, found 8 inch concrete cylinder, top broken off at 45° angle, down 0.2 foot, at centerline intersection. Placed a 0.5 inch rebar in center of concrete monument and witnessed as follows:

15" N. Pine	N 50° W	44.94 feet	8" W. Pine	N 40° E	37.75 feet
23" W. Pine	S 42° E	63.51 feet	8" Burr Oak	S 10° W	20.82 feet

The monument, recovered and established references for the position are shown on the face of this document.

Analysis of the recovered record data, field evidence and survey measurements, indicates that the monument recovered by the CCHD/SO in 2015 is the accepted location of this corner.

County Coordinates (Cass County South)

Northing 283768.00

Easting 488181.06