



A000611895

OFFICE OF THE COUNTY RECORDER  
CASS COUNTY, MINNESOTA  
CERTIFIED, FILED, AND/OR  
RECORDED ON

5/21/2015 9:43:22 AM

AS DOC #: A000611895

PAGES: 2

REC FEES: 0.00

KATHRYN M. NORBY  
CASS COUNTY RECORDER

BY SR \_\_\_\_\_ Dep TX#: 122921

Twp 137 Rge 30 Index No. R.0-09.0

# CERTIFICATE OF LOCATION OF GOVERNMENT CORNER

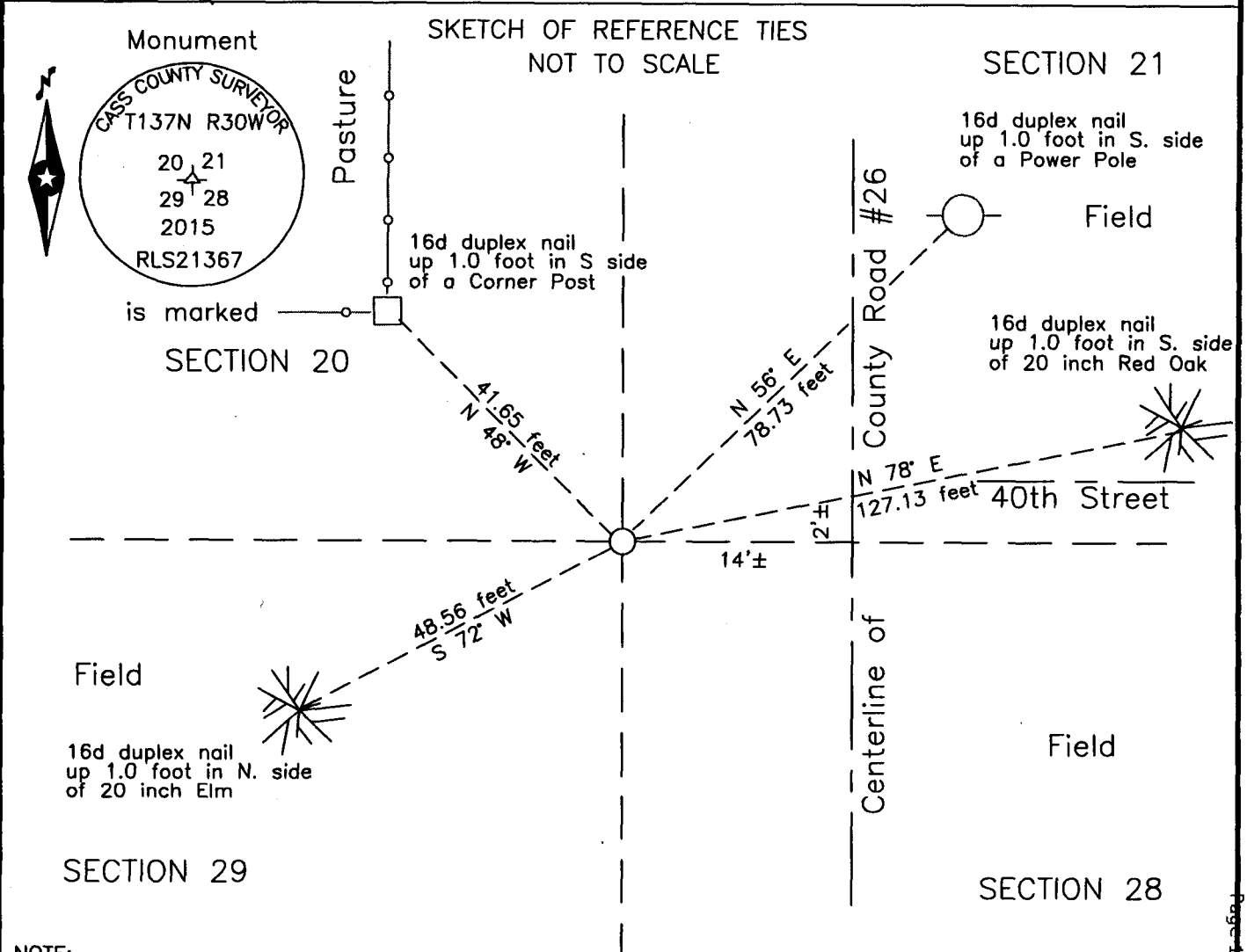
Northeast corner of Section 29, Township 137 N., Range 30 W., 5th P.M.  
State of Minnesota, County of Cass

At the corner location shown on the sketch:

On \_\_\_\_\_ found \_\_\_\_\_

left monument as found     lowered monument     removed monument (explain)

On 1 May 2015 placed an 1 inch by 30 inch aluminum tube with aluminum cap,  
down 0.1 foot, 14 feet± west of centerline County Road #26.



NOTE:  
All bearings are true

Statement of evidence relative to this corner location is on the back of this page.

I hereby certify that this survey, plan or report was prepared by me or under my direct supervision and that I am a duly Licensed Land Surveyor under the laws of the State of Minnesota.

Terry L. Freeman, Cass County Surveyor  
Date 5/20/15 MN License No. 21367



Statement of Evidence**Northeast corner Section 29, Township 137 North, Range 30 West, 5th Principal Meridian.**

- Oct. 1870 R.Cronk, General Land Office (GLO) Deputy Surveyor, notes for the subdivision of Township 137 North, Range 30 West, set a post for the original corner and referenced it as follows:  
 8" Aspen N 35° W 57 links (37.6 feet) 9" Aspen N 18° E 70 links (46.2 feet)  
 6" Dead Birch S 60° E 22 links (14.5 feet) 8" Bl.Oak S 37° W 138 links (91.1 feet)  
 The above record is on file with the Minnesota Historical Society in St. Paul, Minnesota, copies are filed with the Cass County Highway Department, Surveyor's Office (CCHD/SO).
- Nov. 1908 J.W. Curo, LS 1428, Cass County Surveyor, Survey Record No. 273, Book B, page 147 and Curo book 85, page 247, both on file in the CCHD/SO, states "We find the SW Oak and the NW Aspen plainly marked and standing dead, but the Government Surveyors got the measurements to the NE and the NW Aspen bearings mixed, so by reversing the measurements to the Aspen we set the true corner and then the old bearing trees stand as follows:"  
 8" Blk.Oak S 37° W 138 links, to face 8" D. Aspen N 25° W 70 links to face  
 He then continues "A D. Asp. about 9 inches thru which I am sure was one of the old bearing trees and which has been burned and is down, bears N 18° E, 57 lks., distant and a Birch root bears South 60° E, 22 lks. dist."
- May 1915 N.D. Gorman, Deputy County Surveyor, Survey Record No. 266, Book B, page 118 and Curo book 90, page 57, both on file in the CCHD/SO, states "I find the stump of the Bur Oak still standing. There is a trace of the old blaze. Pete Anderson & J. Johnson will testify that they saw scribe marks before blaze was destroyed. I set this cor. from the Bur Oak stump and place a flag at this corner". He later states "I set 2 ¼ by 48" iron monument at the corner to secs 20, 21, 28 & 29."
- May 1916 E.B. Horst, LS 376, Deputy County Surveyor, Survey Record No. 320, Book B, page 403 and Curo book 64, page 28, both on file in the CCHD/SO, states "Beginning at the cor to secs 20, 21, 28 & 29, T. 137, Rg. 30, being an iron monument previously established for said corner".
- Circa 1969 Cass County Highway Department (CCHD), Project S.A.P. 11-626-01, notes on file in the CCHD, show corner assumed 6.1 feet west, at Station 104+88.7, at Twp. Road east and fence line west.
- April 1975 M.L. Landecker, LS 7452, Certificate of Survey for Arvig Telephone, file #1079, indicates testimony by C. Robert Kangas, that section corner is the intersection of County Road #26 and Township Road to east.
- April 2000 B. Hippen and C. Loe, technicians, records of the CCHD/SO, search corner position in road, no evidence was found.
- May 2012 C.M. Hidde, LS 44881, Certificate of Location of Government Corner, on file in the Cass County Records Office, as Document #A000582322, indicates no monument was recovered, a Mag nail was set at centerline intersection at the perpetuation of the 1975 Landecker survey and witnessed as follows:  
 ½" W. Pine S 54° E 60.57 feet 8" W. Pine N 70° W 52.46 feet  
 Power Pole N 54° E 65.49 feet
- April 2015 B. Hippen, technician and C. Reynolds, CCHD equipment operator, records of the CCHD/SO, excavated a 6 foot east-west by 10 foot north-south area based on the doubled bearing and distance between the recovered Northwest and North Quarter corners of Section 29. The dig was 4 feet deep, to a change in soil color. No evidence of the corner was found.
- May 2015 B. Hippen, technician, records of the CCHD/SO, set an aluminum Cass County monument at the obliterated position for the subject corner, at the doubled bearing and distance between the recovered Northwest and North Quarter corners of Section 29, 2 feet, more or less, south of the traveled centerline of 40<sup>th</sup> Street and 14 feet, more or less, west of centerline of CSAH #26, down 0.1 foot and witnessed as follows:  
 Power Pole N 56° E 78.73 feet 20" Red Oak N 78° E 127.13 feet  
 Fence Corner N 48° W 41.65 feet 20" Elm S 72° W 48.56 feet

The recovered and established references for the position are shown on the face of this document.

**Analysis of the recovered record data, field evidence and survey measurements, indicates that the monument set by the CCHD/SO in 2015 is the accepted location of this corner.**

**County Coordinates (Cass County South)**

Northing 283722.50

Easting 493465.25