



A000611894

OFFICE OF THE COUNTY RECORDER
CASS COUNTY, MINNESOTA
CERTIFIED, FILED, AND/OR
RECORDED ON

5/21/2015 9:43:21 AM

AS DOC #: A000611894

PAGES: 2

REC FEES: 0.00

KATHRYN M. NORBY
CASS COUNTY RECORDER

BY SR _____ Dep TX#: 122921

Twp 137 Rge 30 Index No. R.0-07.0

CERTIFICATE OF LOCATION OF GOVERNMENT CORNER

North Quarter corner of Section 29, Township 137 N., Range 30 W., 5th P.M.

State of Minnesota, County of Cass

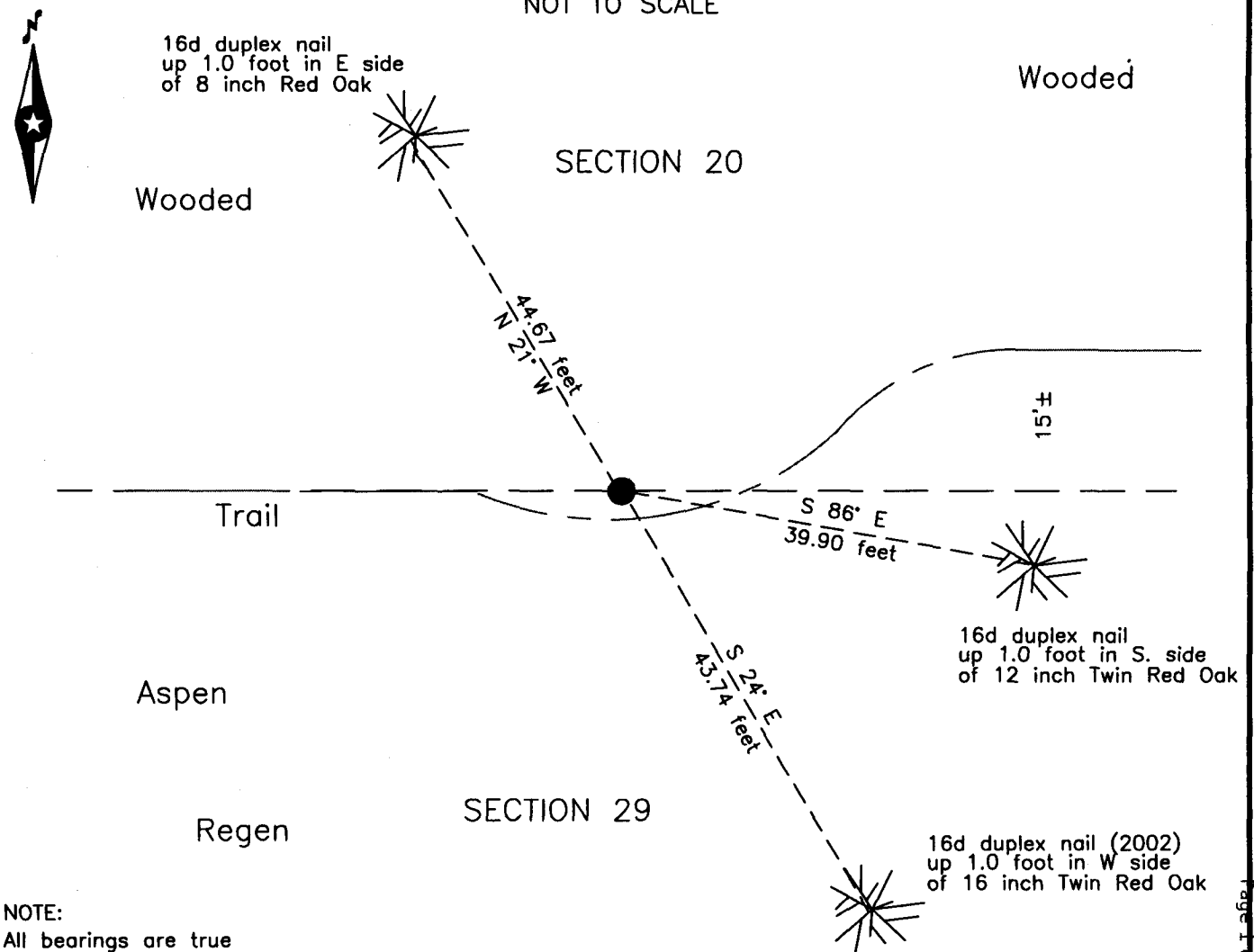
At the corner location shown on the sketch:

On 31 March 2015 found a 2 inch outside diameter iron pipe, top 0.6 foot bent,
at bend in trail.

left monument as found lowered monument removed monument (explain)

On _____ placed _____

SKETCH OF REFERENCE TIES
NOT TO SCALE



NOTE:
All bearings are true

Statement of evidence relative to this corner location is on the back of this page.

I hereby certify that this survey, plan or report was prepared by me or under my direct supervision and that I am a duly Licensed Land Surveyor under the laws of the State of Minnesota.

Terry L. Freeman, Cass County Surveyor
Date 5/20/15 MN License No. 21367

Page 1 of 2
A000611894

Statement of Evidence**North Quarter corner Section 29, Township 137 North, Range 30 West, 5th Principal Meridian.**

- Oct. 1870 R. Cronk, General Land Office (GLO) Deputy Surveyor, notes for the subdivision of Township 137 North, Range 30 West, set a post for the original corner and referenced it as follows:
 10" W. Pine S 29° E 27 links (17.82 feet) 8" Maple N 2° E 46 links (30.36 feet)
 The above record is on file with the Minnesota Historical Society in St. Paul, Minnesota, copies are filed with the Cass County Highway Department, Surveyor's Office (CCHD/SO).
- May 1916 E.B. Horst, LS 376, Deputy County Surveyor, Survey Record No. 320, Book B, page 405 and Curo book 64, page 35 and 36, on file in the CCHD/SO, indicates corner position midway and on line between section corners and states "we set 2 in x 4 ft I.M. We also set an I.M. at ¼ cor between Sec's 20 and 29".
- April 2002 B. Hippen, technician, records of the CCHD/SO, found a 2 inch outside diameter iron pipe, top 0.6 foot is bent, at bend in trail and witnessed as follows:
 6" Burr Oak N 13° W 15.27 feet 15" Twin Red Oak S 24° E 43.74 feet
 6" Red Oak N 75° E 9.48 feet
- March 2002 B. Hippen, technician, records of the CCHD/SO, found a 2 inch outside diameter iron pipe, top 0.6 foot is bent, at bend in trail, a clearing 40 feet wide has been made, 20 feet, more or less east of corner, witnessed as follows:
 8" Burr Oak N 21° W 44.67 feet 12" Twin Red Oak S 86° E 39.90 feet
 12" Twin Red Oak S 24° E 43.74 feet (2002)

The recovered and established references for the position are shown on the face of this document.

Analysis of the recovered record data, field evidence and survey measurements, indicates that the monument recovered by the CCHD/SO in 2002 is the accepted location of this corner.

County Coordinates (Cass County South)

Northing 283745.25

Easting 490823.15