



A000611514

OFFICE OF THE COUNTY RECORDER  
CASS COUNTY, MINNESOTA  
CERTIFIED, FILED, AND/OR  
RECORDED ON

5/7/2015 10:09:30 AM

AS DOC #: A000611514

PAGES: 2

REC FEES: 0.00

KATHRYN M. NORBY  
CASS COUNTY RECORDER

BY SR \_\_\_\_\_ Dep TX#: 122603

Page 1 of 2 A000611514

Twp 137 Rge 32 Index No. E.0-25.0

### CERTIFICATE OF LOCATION OF GOVERNMENT CORNER

Northeast corner 12 of Section 12, Township 137 N., Range 32 W., 5th P.M.

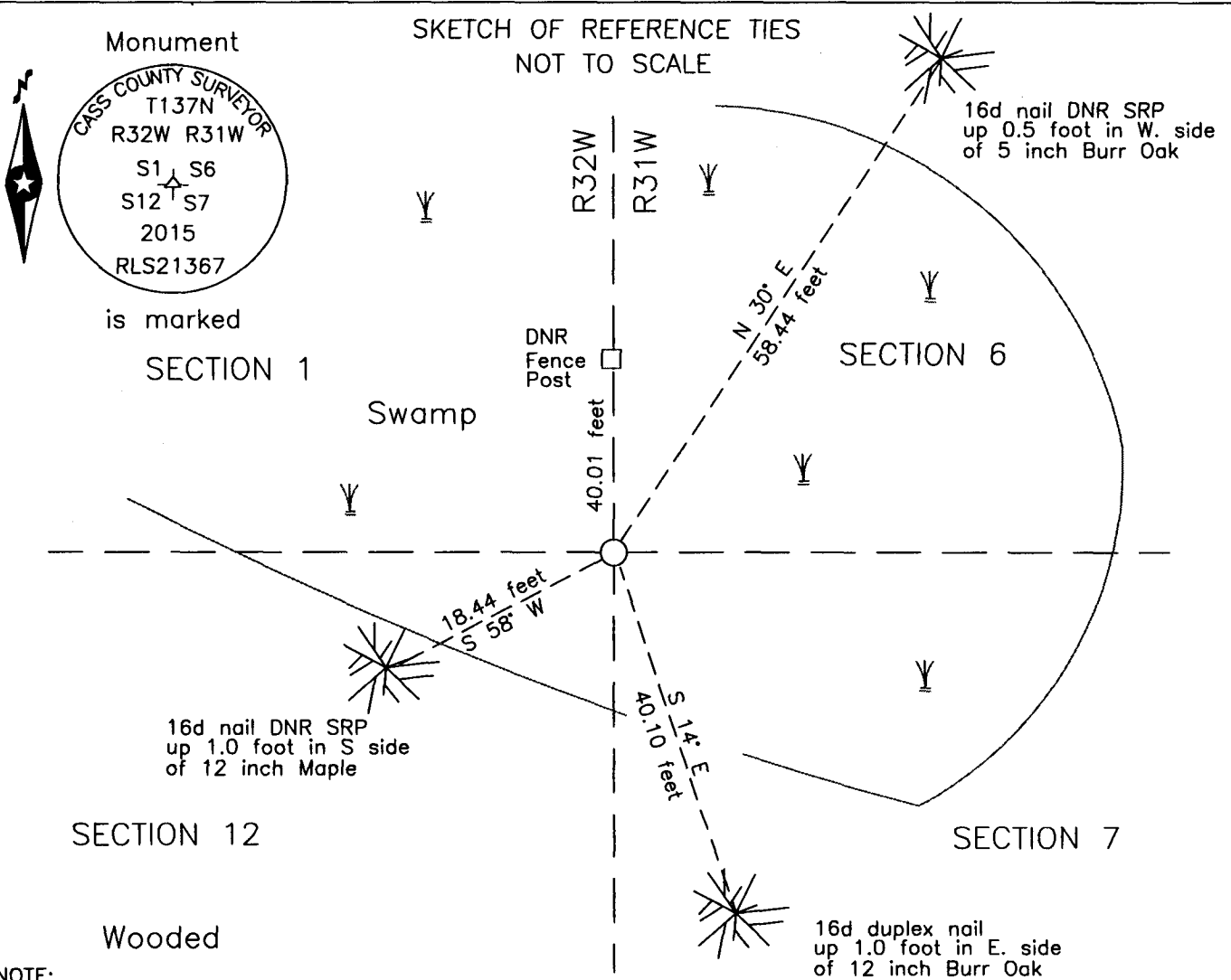
State of Minnesota, County of Cass

At the corner location shown on the sketch:

On \_\_\_\_\_ found \_\_\_\_\_

left monument as found     lowered monument     removed monument (explain)

On 19 Mar 2015 placed an 1 inch by 30 inch aluminum tube with aluminum cap,  
up 0.9 foot, in a small swamp.



NOTE:  
All bearings are true

Statement of evidence relative to this corner location is on the back of this page.

I hereby certify that this survey, plan or report was prepared by me or under my direct supervision and that I am a duly Licensed Land Surveyor under the laws of the State of Minnesota.

Terry L. Freeman, Cass County Surveyor  
Date 5/6/15 MN License No. 21367

Statement of Evidence

**Northeast corner Section 12, Township 137 North, Range 32 West, 5th Principal Meridian.**

- July, 1860 J.W. Myers, General Land Office (GLO) Deputy Surveyor, notes for the survey of the 4<sup>th</sup> Guide Meridian set a post for the original corner and referenced it as follows:  
 10" Pine S 5° E 43 links (28.38 feet) 5" Oak S 55° W 50 links (33.00 feet)  
 10" Aspen N 85° E 91 links (60.06 feet)
- Dec. 1870 R. Cronk, General Land Office (GLO) Deputy Surveyor, notes for the subdivision of Township 137 North, Range 32 West, located the post.  
 The above record is on file with the Minnesota Historical Society in St. Paul, Minnesota, copies are filed with the Cass County Highway Department, Surveyor's Office (CCHD/SO).
- Oct. 2002 P.J. Axness, Minnesota Department of Natural Resources (DNR), Foothills State Forest, file SFT00019, on file in the Brainerd Office, set a 5 foot steel fence post, up 1.5 feet in swamp at the lost position, on line between the Northeast corner of Section 1 and the Southeast corner of Section 12. This position is 52 feet south of the north and 50 feet, more or less, north of the south edge of a small swamp, GLO land calls make these 92 feet north and 16.5 feet south to the swamp edges, witnessed steel fence post as follows:  
 4" Oak 70° 30.14 feet 12" Oak 200° 53.36 feet  
 8" Oak 130° 61.98 feet
- Aug. 2004 J.D. Walker, LS 16098, DNR, Foothills State Forest, file SFT00019, on file in the Brainerd Office, indicates this corner on the Certificate of Survey and an unrecorded front of Certificate of Location of Government Corner.
- March 2015 B. Hippen, technician, records of the CCHD/SO, found DNR fence post in swamp. Location of the swamp edges agree very closely with the GLO feature calls, the south edge of the swamp is a fairly sharp bank and is used to determine the corner location at 16.50 feet from the south swamp edge on the line between the recovered northeast corner of Section 13 and the northeast corner of Section 1. This allows the GLO witnesses to fall on dry ground which was no possible from the DNR position. A 1inch diameter by 30 inch aluminum tube with aluminum cap was set at this position, up 0.9 foot and witnessed as follows:  
 5" Burr Oak N 30° E 58.44 feet 12" Burr Oak S 14° E 40.10 feet  
 12" Twin Maple S 58° W 18.44 feet Steel Post North 40.0 feet  
 The recovered and established references for the position are shown on the face of this document.

**Analysis of the recovered record data, field evidence and survey measurements, indicates that the monument set by the CCHD/SO in 2015 is the accepted location of this corner.**

County Coordinates (Cass County South)  
 Northing 299078.23  
 Easting 451470.21