



A000610756

OFFICE OF THE COUNTY RECORDER
CASS COUNTY, MINNESOTA
CERTIFIED, FILED, AND/OR
RECORDED ON

4/9/2015 10:15:25 AM

AS DOC #: A000610756

PAGES: 2

REC FEES: 0.00

KATHRYN M. NORBY
CASS COUNTY RECORDER

BY SR Dep TX#: 121975

Page 1 of 2
A000610756

Twps 137 Rge 31 Index No. R.0-17.0

CERTIFICATE OF LOCATION OF GOVERNMENT CORNER

Northeast corner of Section 27, Township 137 N., Range 31 W., 5th P.M.
State of Minnesota, County of Cass

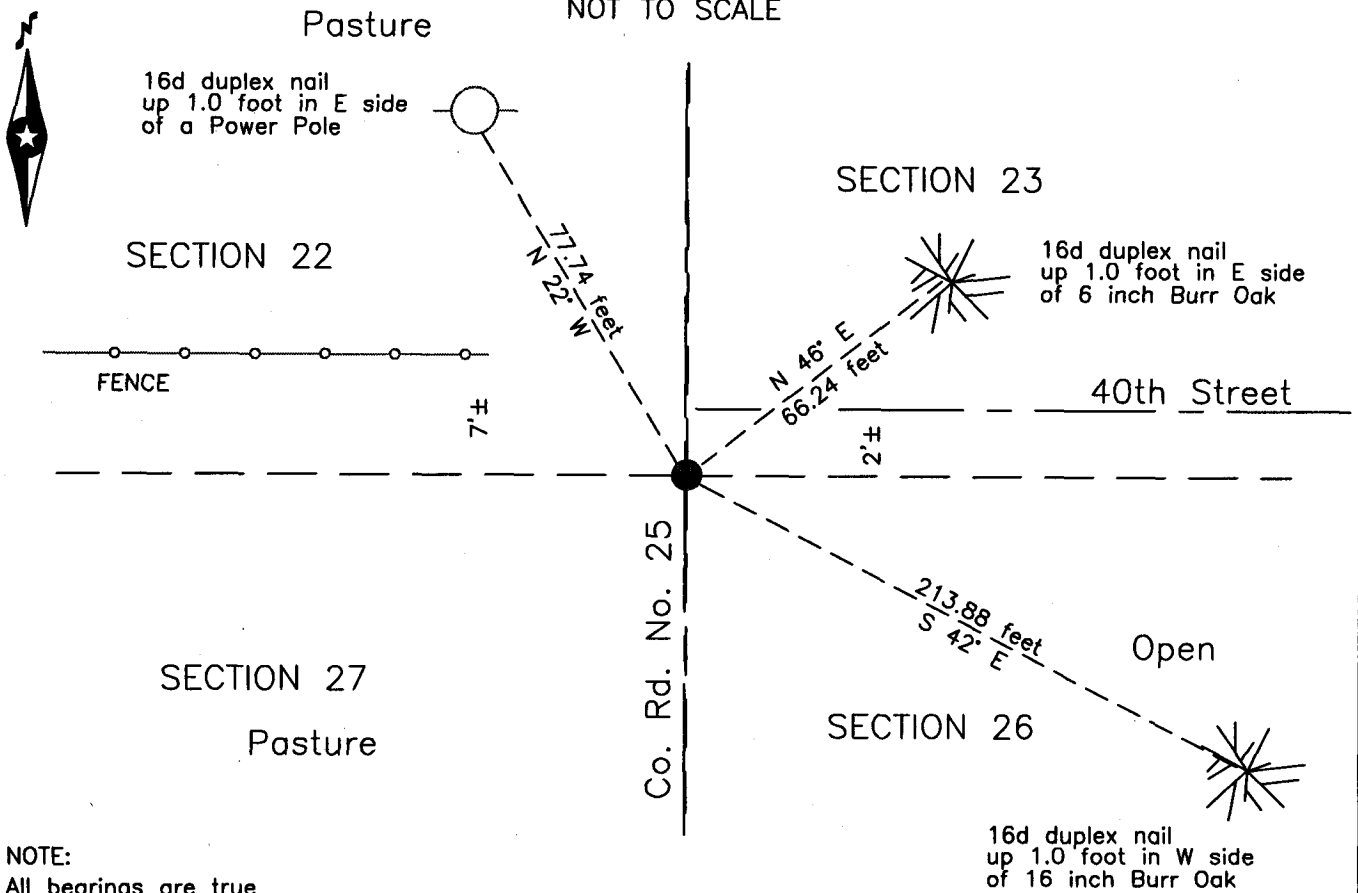
At the corner location shown on the sketch:

On 4 June 2005 found a 1.75 inch outside diameter iron pipe, down 0.3 foot,
on centerline of County Road Number 25, 2 feet ± South of centerline of 40th St.

left monument as found lowered monument removed monument (explain)

On _____ placed _____


SKETCH OF REFERENCE TIES NOT TO SCALE



NOTE:
All bearings are true

Statement of evidence relative to this corner location is on the back of this page.

I hereby certify that this survey, plan or report was prepared by me or under my direct supervision and that I am a duly Licensed Land Surveyor under the laws of the State of Minnesota.


Terry E. Freeman, Cass County Surveyor
Date 4/8/15 MN License No. 21367

**Index No. R.0-17.0**Statement of Evidence**Northeast corner of Section 27, Township 137 North, Range 31 West, 5th Principal Meridian.**

- Aug. 1870 R. Cronk, General Land Office (GLO) Deputy Surveyor, notes for the subdivision of Township 137 North, Range 31 West, set a post for the original corner and referenced it as follows:
 8" W. Birch N 30° E 18 links(11.88 feet) 7" W. Birch N 37° W 16 links(10.56 feet)
 12" W. Birch S 4° E 25 links(16.50 feet) 9" Aspen S 74° W 20 links(13.20 feet)
 The above record is on file with the Minnesota Historical Society in St. Paul, Minnesota, copies are filed with the Cass County Highway Department, Surveyor's Office (CCHD/SO).
- Dec. 1898 J.M. Canfield, Cass County Surveyor, Road Calendar A, page 81, on file in the CCHD/SO, indicates corner at intersection in road. This road is also shown in Book B, page 32.
- June, 1905 W.H. Hallett, Surveyor's Report for Township Road Order, on file in the CCHD/SO, indicates a road on the north line of Sections 25 and 26, beginning at the subject corner.
- June 1907 J.W. Curo, LS 1428, Cass County Surveyor, Survey Record #87, Book A, page 174 and Survey Record #89, Book A, page 178, on file in the CCHD/SO, lists the GLO bearing trees and states "All are gone except the root of the NW and SW old Gov't bearing trees but we find a long sharp field stone buried in the road centre for the true corner: This stone was placed there by James M. Canfield when he was County Surveyor of Cass County". In Curo Book 99, page 13 he states "Stone in cen of road at corner Secs 22-23-26-27-137-31." On page 15 he begins line north at the subject corner.
- May 1908 J.W. Curo, LS 1428, Cass County Surveyor, Curo Book 95, page 59, on file in the CCHD/SO, states "Began @ Sharp stone set at true corner to secs 22-23-27-28-137-31."
- Nov. 1908 J.W. Curo, LS 1428, Cass County Surveyor, Survey Record #273, Book B, page 146, on file in the CCHD/SO, Beginning at the true corner to secs 22, 23, 26, 27, T. 137, Rg. 30, previously established by me we run East.
- June 2005 B. Hippen, technician, records of the CCHD/SO, found 1.75 inch outside diameter iron pipe, down 0.3 foot, on centerline County Road #25, 2 feet, more or less, south of centerline 40th Street and witnessed as follows:
 6" R. Oak N 46° E 66.24 feet P. Pole N 22° W 77.74 feet
 16" B. Oak S 42° E 213.88 feet
- May 2011 B. Hippen, technician and P. Swentkofske, CCHD equipment operator, records of the CCHD/SO, excavated a 6 foot east-west by 6 foot north-south area based on the recovered pipe. The dig was 3 feet deep, 1 foot past natural soil. No large stones were recovered. The 1.75 inch outside diameter iron pipe, was replaced as found.

The monument, recovered and established references for the position are shown on the face of this document.

Analysis of the recovered record data, field evidence and survey measurements, indicates that the monument recovered by CCHD/SO is the accepted location of this corner.

County Coordinates (Cass County South)

Northing 283764.34

Easting 472156.68