



A000610427

OFFICE OF THE COUNTY RECORDER
CASS COUNTY, MINNESOTA
CERTIFIED, FILED, AND/OR
RECORDED ON

3/26/2015 10:42:24 AM

AS DOC #: A000610427

PAGES: 2

REC FEES: 0.00

KATHRYN M. NORBY
CASS COUNTY RECORDER

BY SR Dep TX#: 121714

Page 1 of 2 A000610427

CERTIFICATE OF LOCATION OF GOVERNMENT CORNER

Index No. L0-21.0

EAST QUARTER CORNER of Section 14, Township 139 N., Range 27 W., 5th P.M.

State of Minnesota, County of Cass.

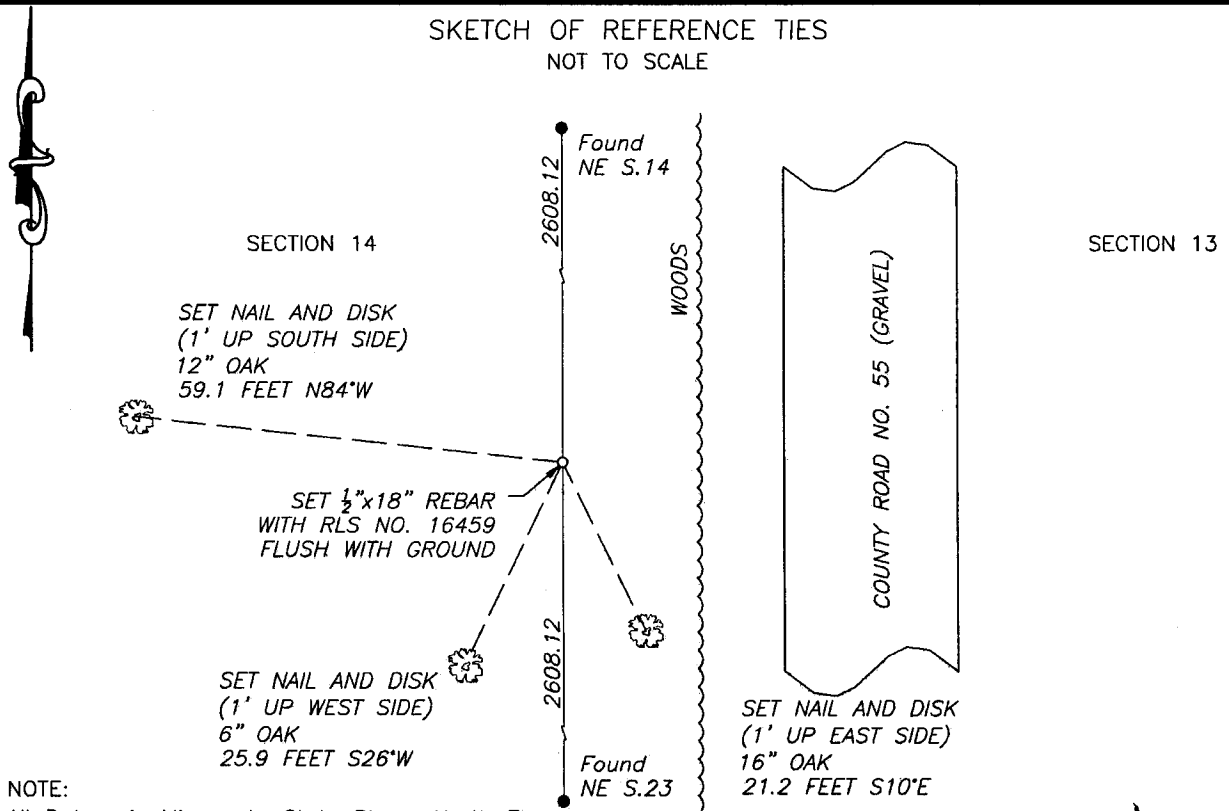
At the corner location shown on the sketch:

On _____ found _____

left monument as found lowered monument removed monument (explain)

On 14 Mar 2014 placed A 1/2" x 18" REBAR WITH RLS CAP MARKED 16459, AT A SINGLE PROPORTION POSITION, ±42 FEET WESTERLY OF ROAD CENTERLINE.

SKETCH OF REFERENCE TIES
NOT TO SCALE



NOTE:
All Datum is Minnesota State Plane, North Zone

Statement of evidence relative to this corner location is on the back of this page.

I hereby certify that this survey, plan or report was prepared by me or under my direct supervision and that I am a duly Licensed Land Surveyor under the laws of the State of Minnesota.
I further certify that this United States public land survey monument record is correct and complete to the best of my knowledge and belief.

Robert L. Kovanen
Robert L. Kovanen

Date 3/16/15 MN License No. 16459



Index No. L.0-21.0

Statement of Evidence

East Quarter corner of Section 14, Township 139 North, Range 27 West, 5th Principal Meridian.

April 11 G. Johnson and A. Thornton, General Land Office (GLO) Deputy Surveyors, in the subdivision of this
1864 township, set a post for the original corner and the following accessories were noted:
8" Aspen N 62° E 8 links (5.28 feet) 12" Aspen N 67° W 13 links (8.58 feet)
The original plat and above record are archived with the Minnesota Historical Society, St. Paul, Minnesota,
copies are filed with Cass County.

Feb.22 Under the direction of J.W. Curo, Cass County Highway Department/Surveyor's Office, Deputy Surveyors
1913 Kemp and Todd, Survey Record No. 230, Book A, page 579, on file with Cass County Highway
Department/Surveyor's Office, set the corner lost between the recovered Northeast and Southeast corners
of Section 14, from a random line the record states "At 7853.40 run West 145.85 feet and set a stake for
the ¼ corner between Secs 13 & 14 T139-27 and mark the following bearing trees:"
6" White Birch N 60° W 30.75 feet 18" White Pine N 47° E 41.10 feet

Nov.8 Survey Record No. 551, Book D, page 195, on file with Cass County Highway Department/Surveyor's
1923 Office, Resurvey of Rec. #230 states "J.M. Greene, Trans...Cut South from S.E. Cor. 2-139-27 on pld
random. Corr. 2°25'W...Nov. 10...Continued on South...Sta.7852.4, run west 145.85, set stake for ¼ Cor.
Sec. 13 & 14", and lists the 1913 witnesses. The field notes of this record are in Curo Field Book 173
available at Cass County Highway Department/Surveyor's Office, Pages 53-75.

1936 Civilian Conservation Corps, Book 7, page 4, on file with the Minnesota Department of Natural Resources in
Brainerd, MN, as listed on the Cass County Land Corner record, states "at 40.3 Ch. N. of SE 14 B.T.s: 18"
W.Pine N 52 ½ E 60 lks, B. Pine 25 lks E. of ¼, 12" W.Pine N 41 W 130.75 lks".

Nov. Northwestern Surveying and Engineering, Inc. (NWSE), crew of Bomstad and Walker-O'Beirne searched
2013 for the subject corner with no recovery.

March NWSE, Robert Kovanen, LS 16459, reviewed the existing information and computed a lost position
2014 between the recovered and certified Northeast and Southeast corners of Section 14.

March Northwestern Surveying and Engineering, Inc. (NWSE), crew of Bomstad and Walker-O'Beirne made an
2014 additional search and with no recovery and confirmation with Robert Kovanen, placed a ½ by 18 inch rebar,
capped LS 16459 at the position described above. The monument, together with the recovered and
established references for the position is shown on the face of this document.

Analysis of the recovered record data, field evidence and survey measurements, indicates that the monument
established by NWSE in 2014 is the accepted location of this corner.