



A000610420

OFFICE OF THE COUNTY RECORDER
CASS COUNTY, MINNESOTA
CERTIFIED, FILED, AND/OR
RECORDED ON

3/26/2015 10:42:17 AM

AS DOC #: A000610420

PAGES: 2

REC FEES: 0.00

KATHRYN M. NORBY
CASS COUNTY RECORDER

BY SR _____ Dep TX#: 121714

Page 1 of 2 A000610420

Twp 138 Rge 32 Index No. E.0-03.0

CERTIFICATE OF LOCATION OF GOVERNMENT CORNER

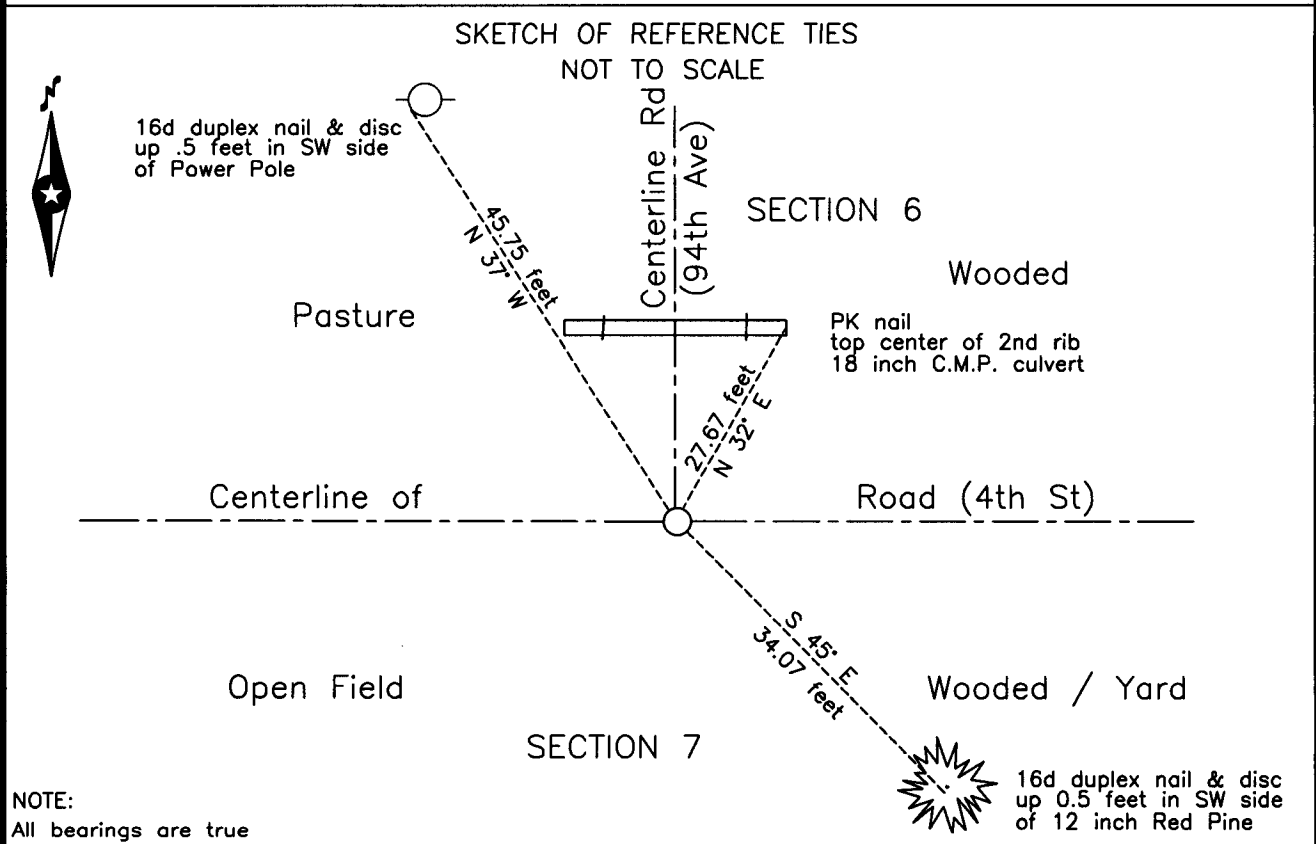
North Quarter corner of Section 7, Township 138 N., Range 32 W., 5th P.M.
State of Minnesota, County of Cass.

At the corner location shown on the sketch:

On _____ found _____
at intersection of road centerlines and 1916 distance from old school.

left monument as found lowered monument removed monument (explain)

On 22 Aug 2014 placed 1/2 x 12" rebar, capped RLS 16459, at an obliterated
position, at the centerline intersection of the east-west road and the road north.



Statement of evidence relative to this corner location is on the back of this page.

I hereby certify that this survey, plan or report was prepared by me or under my direct supervision and that I am a duly Licensed Land Surveyor under the laws of the State of Minnesota.
I further certify that this United States public land survey monument record is correct and complete to the best of my knowledge and belief.

Robert L. Kovanen
Date 3/13/15 MN License No. 16459



Index No. E.0-03.0

Statement of Evidence**North Quarter corner of Section 7, Township 138 North, Range 32 West, 5th Principal Meridian.**

Dec. 1870 M. Black, General Land Office (GLO) Deputy Surveyor set a post for the original corner in the subdivision of this township and referenced it as follows:

6" Black Pine S 68 1/2° W 4.21 links (*Scrivener's error, assumed to be chains not links, 277.86 feet*)

18" Norway Pine N 26 1/2° E 3.69 links (*Scrivener's error, assumed to be chains not links, 243.54 feet*)

The original plat and the above record are archived at the Minnesota Historical Society, St. Paul, Minnesota, copies are filed in Cass County Highway Department/Surveyor's Office.

March 1908 J.W.Curo, LS 1428, Cass County Surveyor, Survey Record Number 182, Book A, page 421, on file in Cass County Highway Department/Surveyor's Office, working for McKinley Township, states "At the 1/4 Cor. Between Secs. 6 & 7, T.138, R.32, I find both old B.T.'s plainly marked but the distance between them by way of courses is 9.57 feet too long, so I proportion the distance and set a 4 x 4 x 36 inch stake for the true 1/4 corner". No new witnesses are listed.

June 1912 J.W.Curo, LS 1428, Cass County Surveyor, Survey Record Number 182, Book A, page 422, on file in Cass County Highway Department/Surveyor's Office, in a continuation of the 1908 work above, states "we pull up the wood stakes and put 8 x 8 x 36 inch cement posts at section and 1/4 corners in Twp. 138, Rge. 32, at the following places:....the 1/4 cor. Between Secs. 6 and 7 on the N. side Sec. 6". The graphics on page 419 indicate "1/4 Cor. 8"x8"x36" Cement" at the subject corner. No new witnesses are listed and no measurements from adjacent corners are given. The field notes of Survey Record Number 182 are in Curo Field Book 98, pages 90 to 103, on file in Cass County Highway Department/Surveyor's Office. No reference to the subject corner can be found in said notes.

1916 Minnesota Plat Book – 1916, on file at the John R. Borchert Map Library of the University of Minnesota (U of MN Map Library), indicates different owners to the northeast, northwest, and south of the subject corner. It also indicates a school in the Southwest Quarter of the Southeast Quarter of Section 6 indicating that, although not marked on said plat book, there may have been a road on the section line at that time.

Aug. 1939 Air photo BXQ-1-87, available at the Minnesota Department of Natural Resources and the U of MN Map Library was georeferenced and positioned under the Northwestern Surveying and Engineering, Inc. (NWSE) working drawing. Roads are evident on the line between Section 6 and 7 and on the north-south quarter line of Section 6. A lost placement of the subject corner would fall east of said road intersection.

Aug. 2014 NWSE, Robert Kovanen, LS 16459, reviewed existing data and determined that lacking recovery of a monument or accessories, the intersection of the township road centerlines, which is in agreement with occupation to the south and have existed over 75 years, is the best evidence of the Curo 1908 perpetuation of the original corner.

Aug. 2014 NWSE crew of Walker-O'Beirne and McLellan searched the corner vicinity with no recovery, they located the centerlines of 4th Street SW and 94th Ave. SW and a field line to the south. Upon confirmation with Robert Kovanen, LS 16459, a rebar capped LS 16459, was set at the centerline intersection as located. No excavation was made. The monument, together with the recovered and established references for the position, is shown on the face of this document.

Analysis of the recovered record data, field evidence and survey measurements, indicates that the monument established in 2014 by NWSE is the accepted location of this corner.