



A000610276

OFFICE OF THE COUNTY RECORDER
CASS COUNTY, MINNESOTA
CERTIFIED, FILED, AND/OR
RECORDED ON

3/19/2015 11:05:02 AM

AS DOC #: A000610276

PAGES: 2

REC FEES: 0.00

KATHRYN M. NORBY
CASS COUNTY RECORDER

BY MW Dep TX#: 121589

Page 1 of 2
A000610276

CERTIFICATE OF LOCATION OF GOVERNMENT CORNER

Index No. L0-13.0

EAST QUARTER CORNER of Section 16, Township 139 N., Range 27 W., 5th P.M.
State of Minnesota, County of Cass.

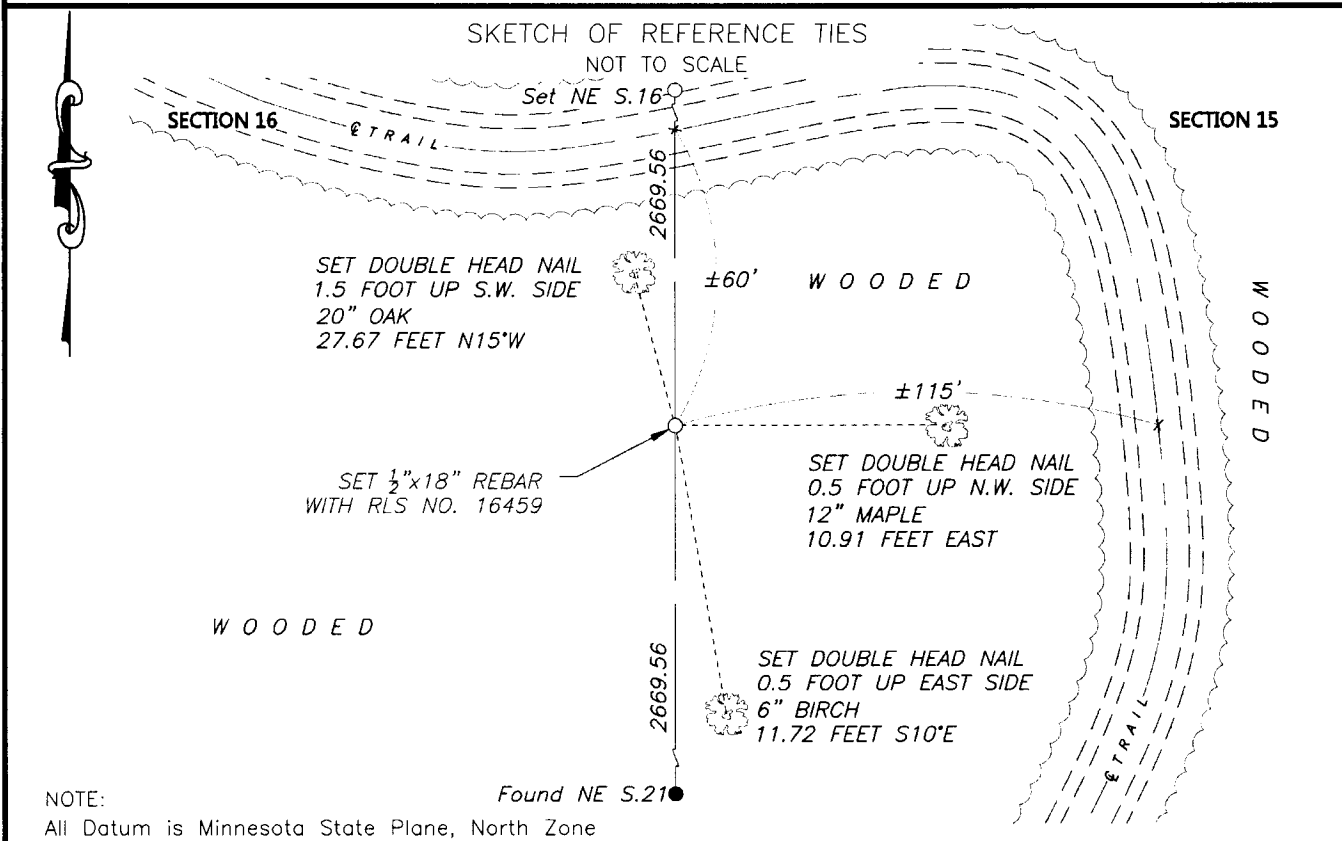
At the corner location shown on the sketch:

On _____ found _____

left monument as found lowered monument removed monument (explain)

On 10 APR 2014 placed A 1/2" x 18" REBAR WITH CAP MARKED

RLS NO. 16459, AT A SINGLE PROPORTION POSITION.



Statement of evidence relative to this corner location is on the back of this page.

I hereby certify that this survey, plan or report was prepared by me or under my direct supervision and that I am a duly Licensed Land Surveyor under the laws of the State of Minnesota.
I further certify that this United States public land survey monument record is correct and complete to the best of my knowledge and belief.

Robert L. Kovanen
Date 3/13/15 MN License No. 16459



Index No. L.0-13.0

Statement of Evidence

East Quarter corner of Section 16, Township 139 North, Range 27 West, 5th Principal Meridian.

April 11 1864 G. Johnson and A. Thornton, General Land Office (GLO) Deputy Surveyors, in the subdivision of this township, set a post for the original corner and the following accessories were noted:
9" Maple S 40° E 20 links (13.20 feet) 5" Maple S 45° E 9 links (5.94 feet)
The original plat and above record are archived with the Minnesota Historical Society, St. Paul, Minnesota, copies are filed with Cass County Highway Department/Surveyor's Office.

1937 Civilian Conservation Corps (CCC), Washburn Lake Book 2, page 26, on file at the Minnesota Department of Natural Resources (MN/DNR) office in Brainerd, MN. The Cass County Land Corner Record shows this entry as "Set Approx ¼ cor. 40 Ch. from South".

Nov. 2103 Northwestern Surveying and Engineering, Inc. (NWSE), crew of Bomstad and Walker-O'Beirne searched for the subject corner with no recovery.

April 2014 NWSE, Robert Kovanen, LS 16459, reviewed the existing information and created a search area based on CCC distances.

April 2014 NWSE, crew of Spicer and Floria searched for the subject corner with no recovery.

April 2014 NWSE, Robert Kovanen, LS 16459, determined the corner lost and created a position by single proportion between recovered Southeast and established Northeast corners of Section 16.

April 2014 NWSE, crew of Rice and McLellan made an additional search at the refined location with no recovery. A ½ by 18 inch rebar, capped LS 16459, was placed at the position described above. The monument, together with the recovered and established references for the position are shown on the face of this document.

Analysis of the recovered record data, field evidence and survey measurements, indicates that the monument established by NWSE in 2014 is the accepted location of this corner.