



A000610268

OFFICE OF THE COUNTY RECORDER  
CASS COUNTY, MINNESOTA  
CERTIFIED, FILED, AND/OR  
RECORDED ON

3/19/2015 11:04:54 AM

AS DOC #: A000610268

PAGES: 2

REC FEES: 0.00

KATHRYN M. NORBY  
CASS COUNTY RECORDER

BY MW Dep TX#: 121589

Page 1 of 2 A000610268

Twp 139 Rge 26 Index No. E.0-25.0

### CERTIFICATE OF LOCATION OF GOVERNMENT CORNER

Northeast corner of Section 12, Township 139 N., Range 26 W., 5th P.M.  
State of Minnesota, County of Cass.

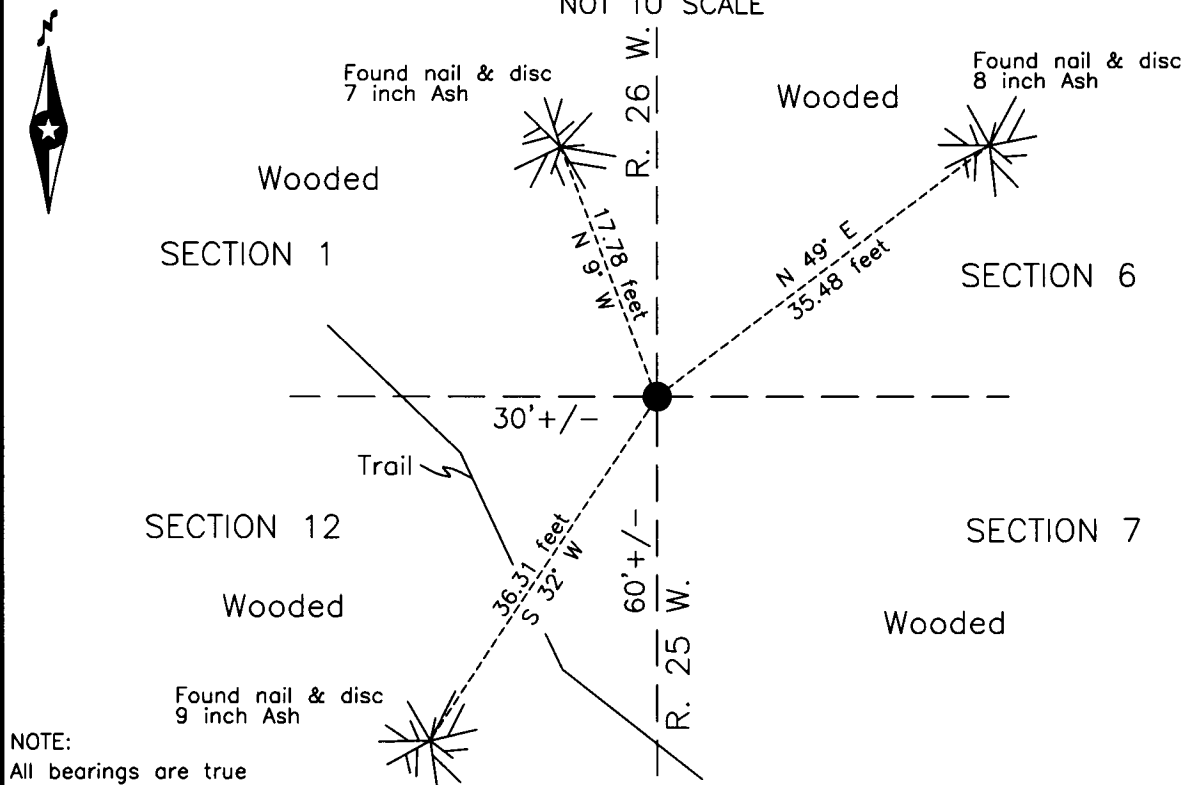
At the corner location shown on the sketch:

On 18 Nov 2013 found \_\_\_\_\_ a 2.5 inch iron pipe with 3 inch cap, flush.

left monument as found     lowered monument     removed monument (explain)

On \_\_\_\_\_ placed \_\_\_\_\_


SKETCH OF REFERENCE TIES  
NOT TO SCALE



NOTE:  
All bearings are true

Statement of evidence relative to this corner location is on the back of this page.

I hereby certify that this survey, plan or report was prepared by me or under my direct supervision and that I am a duly Licensed Land Surveyor under the laws of the State of Minnesota.  
I further certify that this United States public land survey monument record is correct and complete to the best of my knowledge and belief.

  
Robert L. Kovanen  
Date 3/13/15 MN License No. 16459



**Index No. E.0-25.0**

Statement of Evidence

**Northeast corner of Section 12, Township 139 North, Range 26 West, 5th Principal Meridian.**

Nov.15 G. Johnson and A. Thornton, General Land Office (GLO) Deputy Surveyors, in the survey of this Range  
1863 line, set a post for the original corner referenced with bearing tree as follows:  
18" Y. Pine N 22° E 26 links (17.16 feet) 22" Y. Pine S 38° E 48 links (31.68 feet)  
28" W. Pine S 73° W 44 links (29.04 feet) 18" W. Pine N 12° W 83 links (54.78 feet)  
The original plats and above record are archived with the Minnesota Historical Society, St. Paul, Minnesota,  
copies are filed with Cass County Highway Department/Surveyor's Office.

June B.F.Clark, LS 231, Deputy County Surveyor, County Road survey, Surveyor's Record No. 483, Book C,  
25-30, page 540, on file with Cass County Highway Department/Surveyor's Office, states "...Begin at cor. To 1-6-  
1920 31-36 & run S. on rand. Line bet. Sec 1-6...5280 set temp cor. And search for cor. to 1-6-7-12 but find  
nothing." Page 541 states "Thence went N. to the cor. Sec. 1-12-6-7 & set 2 1/2" x 36" I.M. (capped) Witness  
trees:"  
6" Ironwood N 60°45' 37.8 feet 10" Basswood S 55°45' 66.0 feet  
The field notes of this record are in Curo Field Book 162, on file with Cass County Highway  
Department/Surveyor's Office, pages 33, 38 and 42.

1937 Civilian Conservation Corps, Washburn Lake Book 4, page 2, on file with the Minnesota Department of  
Natural Resources in Brainerd, MN. The Cass County Land Corner Record states "Started east from Sec.  
Cor."

2013 KLJ Inc., J. Leas, LS 42619, utilized the subject corner in the proportioning of corners in both Townships  
139 North, Ranges 25 and 26 West.

Nov. Northwestern Surveying and Engineering, Inc. (NWSE), crew of Bomstad and Walker-O'Beirne recovered,  
2013 located and witnessed a 2.5 inch pipe with a 3 inch cap flush with the ground. The monument, together with  
the recovered and established references for the position are shown on the face of this document.

Analysis of the recovered record data, field evidence and survey measurements, indicates that the monument  
recovered by NWSE in 2014 is the accepted location of this corner.