



A000610261

OFFICE OF THE COUNTY RECORDER
CASS COUNTY, MINNESOTA
CERTIFIED, FILED, AND/OR
RECORDED ON

3/19/2015 11:04:47 AM

AS DOC #: A000610261

PAGES: 2

REC FEES: 0.00

KATHRYN M. NORBY
CASS COUNTY RECORDER

BY MW Dep TX#: 121589

Page 1 of 2 A000610261

Twp 138 Rge 32 Index No. E.0-25.0

CERTIFICATE OF LOCATION OF GOVERNMENT CORNER

Northeast corner of Section 12, Township 138 N., Range 32 W., 5th P.M.
State of Minnesota, County of Cass.

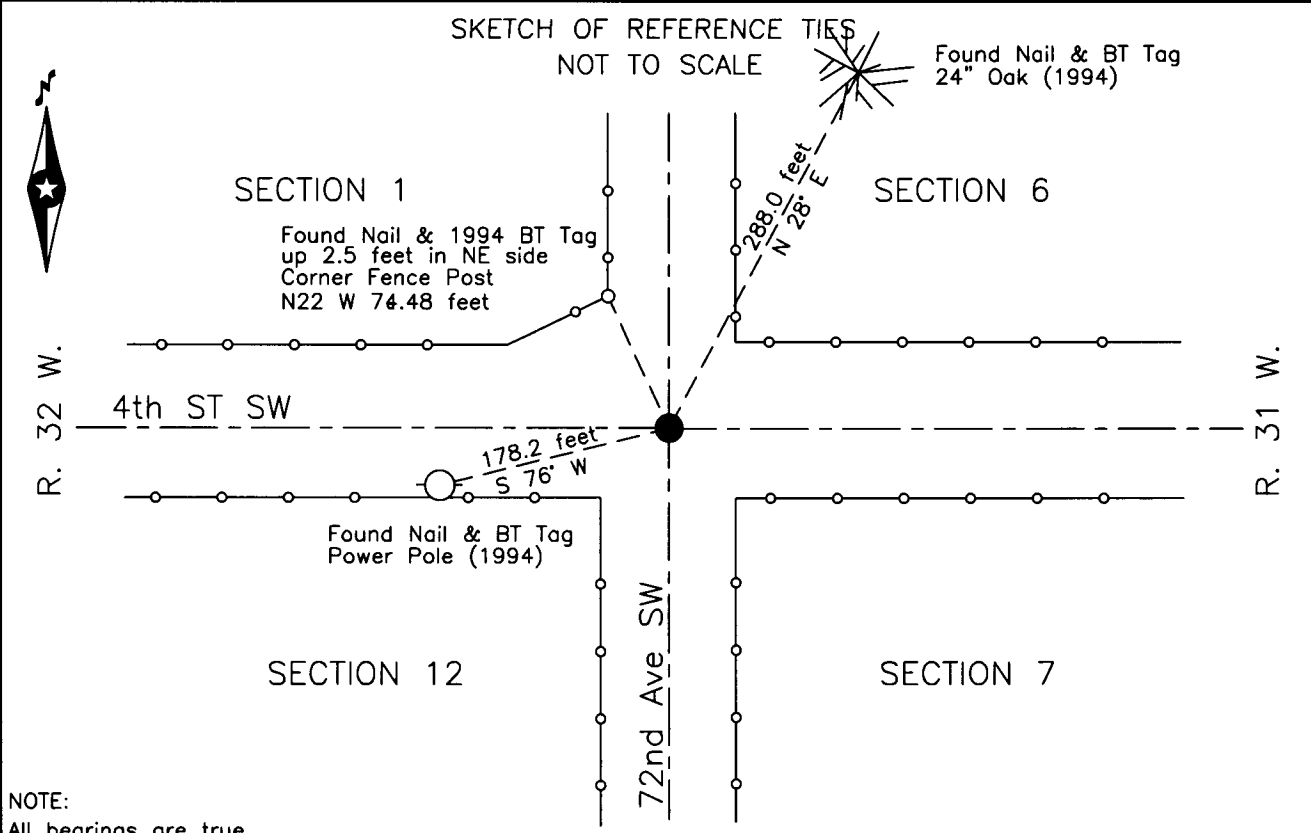
At the corner location shown on the sketch:

On 12 Nov. 2014 found _____ a 1 inch iron pipe, 1 foot below surface, at the

intersection of the centerlines of 4th ST SW and 72nd Ave SW.

left monument as found lowered monument removed monument (explain)

On _____ placed _____



NOTE:
All bearings are true

Statement of evidence relative to this corner location is on the back of this page.

I hereby certify that this survey, plan or report was prepared by me or under my direct supervision and that I am a duly Licensed Land Surveyor under the laws of the State of Minnesota.
I further certify that this United States public land survey monument record is correct and complete to the best of my knowledge and belief.

Robert L. Kovanen
Date 3/13/15 MN License No. 16459



Index No. E.0-25.0

Statement of Evidence

Northeast corner of Section 12, Township 138 North, Range 32 West, 5th Principal Meridian.

July 1860 J.W.Myers, General Land Office (GLO) Deputy Surveyor in surveying the 4th Guide Meridian set a post for the original corner and referenced it as follows:

6" Spruce N 50°W 17 links (11.22 feet) 6" Spruce S 20°W 9 links (5.94 feet)
12" Spruce S 30°E 29 links (19.14 feet) 6" Spruce N 15°E 30 links (19.80 feet)

Said records are on file with the Minnesota Historical Society, St. Paul, Minnesota, copies are filed with Cass County Highway Department/Surveyor's Office.

Dec. 1898 J.Canfield, County Surveyor, Cass County Road Calendar Book B, page 25, Plat of Walker - Motley Road, shows the road to run north and west at this corner position.

June 1912 J.W.Curo, LS 1428, Cass County Surveyors Record No. 177, Book A, pages 402-403 states "We find the point for this corner previously established by James M. Canfield, at the time he was County Surveyor of Cass County, and at this point we place an 8 x 8 x 36 inch cement post in the ground... We find one of the old SE bearing trees plainly marked and the roots of the old NE stump which check for course and distance."

March 1916 J.W.Curo, LS 1428, County Contract subdivision of Sec. 6, T.138 N., R. 31 W., Cass County Surveyors Record No. 357, Book B, pages 561-563 and Curo Field Book 53, on file in Cass County Highway Department/Surveyor's Office. Page 49 states "Beginning at NW cor...we then run line S on State highway...at 5308 ft S SW cor of Sec.6 (8 x8 x36 cement monument) sets West 3.2 ft." Page 52 shows a sketch depicting the subject corner and states "I then take crew and set corners around outside of section as per diagram." Page 61 is a diagram of Section 6 showing distances and angles. The subdivision of Section 6 is recorded as Survey 66 with the Cass County Recorder.

June 1917 E.B.Horst, LS 376, Cass County Surveyors Record No. 385, Book C, pages 62-63, and Curo Field Book 76, page 32, working for Bull Moose and McKinley Townships on a township Road, states "Station 0.00 equals cement monument on range line, being in center of East and West road and road running North and corner to sections 6 and 7, 138-31 and 1 and 12, 138-32."

Feb.- March 1921 B.F.Clark, LS 231, County Section Subdivision of Sec. 7, T.138 N., R. 31 W., Cass County Surveyors Record No. 459, Book C, pages 421-424, and Curo Field Book 53, Page 77 which states "went to the Sec. 6-7 on range line the corner being CEMT. Post and measured south on the middle of a graded road..". The subdivision of Section 7 is recorded as Doc. No. 66539 with the Cass County Recorder.

1982 T.Freeman, survey technician and D.Marcum, Cass County personnel, the Cass County Land Corner Record for this corner indicates an iron rod was found at the centerline intersection of roads N-S and E-W.

1983 G.Stevenson, LS 12684, the Cass County Land Corner Record for this corner indicates a concrete monument was found.

Nov. 2014 Northwestern Surveying and Engineering, Inc. (NWSE) survey crew of Bomstad and Williams recovered, located and witnessed a 1 inch iron pipe. The monument, together with the recovered and established references for the position are shown on the face of this document.

Analysis of the recovered record data, field evidence and survey measurements, indicates that the monument recovered by NWSE in 2014 is the accepted location of this corner.