



A000610237

OFFICE OF THE COUNTY RECORDER
CASS COUNTY, MINNESOTA
CERTIFIED, FILED, AND/OR
RECORDED ON

3/19/2015 11:01:34 AM

AS DOC #: A000610237

PAGES: 2

REC FEES: 0.00

KATHRYN M. NORBY
CASS COUNTY RECORDER

BY SR _____ Dep TX#: 121588

Twp 138 Rge 30 Index No. G.0-21.0

CERTIFICATE OF LOCATION OF GOVERNMENT CORNER

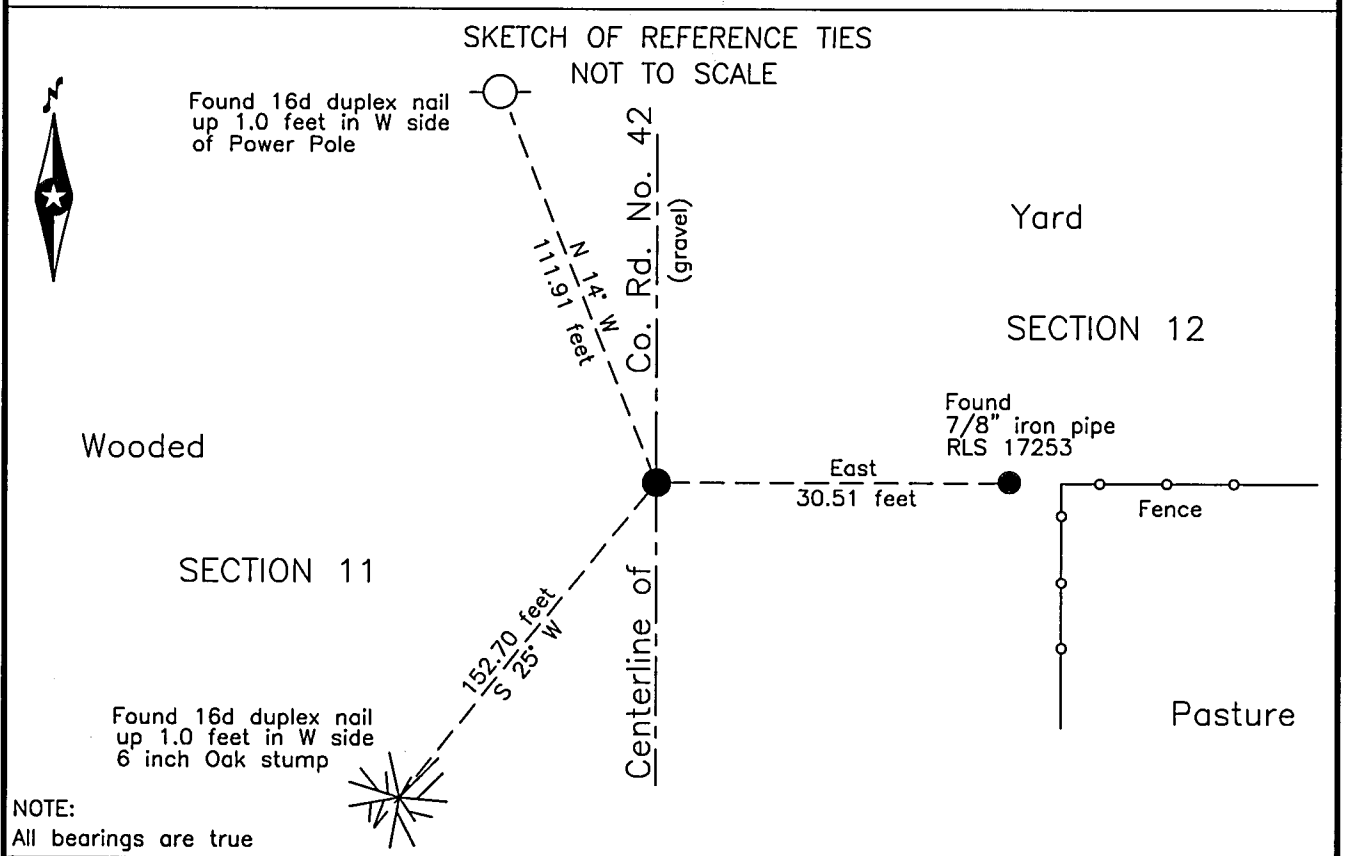
East Quarter corner of Section 11, Township 138 N., Range 30 W., 5th P.M.
State of Minnesota, County of Cass.

At the corner location shown on the sketch:

On 17 Nov 2014 found a 7/8 inch outside diameter iron pipe with illegible cap,
down 0.2 foot, on centerline of County Road Number 42

left monument as found lowered monument removed monument (explain)

On _____ placed _____



NOTE:
All bearings are true

Statement of evidence relative to this corner location is on the back of this page.

I hereby certify that this survey, plan or report was prepared by me or under my direct supervision and that I am a duly Licensed Land Surveyor under the laws of the State of Minnesota.
I further certify that this United States public land survey monument record is correct and complete to the best of my knowledge and belief.

Robert L. Kovanen
Date 3/13/15 MN License No. 16459



Index No. G.0-21.0

Statement of Evidence

East Quarter corner Section 11, Township 138 North, Range 30 West, 5th Principal Meridian.

July 18, G.B.Wright, GLO Deputy Surveyor, in the notes of the subdivision of Township 138 North, Range 30
1865 West set a post for the original corner and referenced it as follows:
7" N. Pine N 42° E 20 links (13.20 feet) 8" Blk Pine S 88 1/4° W 16 links (10.56 feet)
Said records are on file at the Minnesota Historical Society, St. Paul, Minnesota, copies are filed with the
Cass County Highway Department/Surveyor's Office.

Circa Survey Record Book C, Record No. 441, page 365, on file in the Cass County Highway
1920 Department/Surveyor's Office, consisting of only a graphic depicts an iron monument at this corner as well
as at the corner north; and a distance of 2655.5 feet to the Northeast corner of Section 11. The northeast
and southwest corners and south and east quarter corners of Section 2 are also shown to be iron
monuments. Information on file in Cass County Highway Department/Surveyor's Office.

Circa Cass County Highway Department, Project Number 11-642-01, notes on file in the Cass County Highway
1980 Department/Surveyor's Office, indicate assumed ¼ line at station 264+98.7.

Dec.4, D.Landecker, LS 17008, Landecker and Associates, Pequot Lakes office, performed a survey in the
1998 southeast quarter of Section 11 for James Adrian. The survey on file at the Cass County Highway
Department/Surveyor's Office indicates the subject corner position.

April 6, B.Hippen and C.Loe, CCSO technicians, found a 7/8 inch outside diameter iron pipe, capped RLS
2000 17008, down 0.3 feet, 6 feet west of the centerline of County State Aid Highway Number 42.

Jun.14, B.Grivna, LS 17253, Westwood Professional Services, Brainerd office, performed a survey in the
2002 southwest quarter of Section 12 for John Mueller. The survey on file at the Cass County Highway
Department/Surveyor's Office indicates the subject corner to be set.

Nov.24, J.Kramer, LS 23668, Kramer, Leas & DeLeo, Brainerd office, performed a survey in the northwest
2003 quarter of Section 12. The survey on file at the Cass County Highway Department/Surveyor's Office
indicates the subject corner to be found.

Dec.14, B.Grivna, LS 17253, Westwood Professional Services, Brainerd office, performed a survey in the
2004 southeast quarter of Section 11. The survey on file at the Cass County Highway Department/Surveyor's
Office indicates the subject corner to be found.

Jul. 27, B.Hippen, CCSO technician, found a large spike, down 0.2, 1 foot west of centerline County State Aid
2004 Number 42 at the Grivna position being 19 feet south of the Landecker position.

Jun.28, B.Hippen CCSO technician and P. Swentkofske, backhoe operator, excavated an 18 by 8 by 3.5 foot
2006 hole between the B.Grivna, now marked by a 7/8 inch outside diameter iron pipe capped RLS 17253, and
the D.Landecker positions and found a 60d spike, down 1.6 feet at the B.Grivna position and witnessed the
same as follows:
6" Pin Oak S 25° W 152.70 feet Power Pole N 14° W 111.916 feet
7/8" Pipe #17253 East 30.51 feet

July Northwestern Surveying and Engineering, Inc. (NWSE) crew of Smith and Jackson, recovered and located
2014 a 7/8 inch pipe.

Nov. NWSE crew of Bomstad and Williams, witnessed the 7/8 inch pipe. The monument, recovered and
2014 established references for the position are shown on the face of this document.

**Analysis of the recovered record data, field evidence and survey measurements, indicates that the
monument recovered by NWSE in 2014 is the accepted location of this corner.**