



A000610234

OFFICE OF THE COUNTY RECORDER
 CASS COUNTY, MINNESOTA
 CERTIFIED, FILED, AND/OR
 RECORDED ON

3/19/2015 11:01:31 AM

AS DOC #: A000610234

PAGES: 2

REC FEES: 0.00

KATHRYN M. NORBY
 CASS COUNTY RECORDER

BY SR _____ Dep TX#: 121588

Twp 138 Rge 30 Index No. E.0-21.0

CERTIFICATE OF LOCATION OF GOVERNMENT CORNER

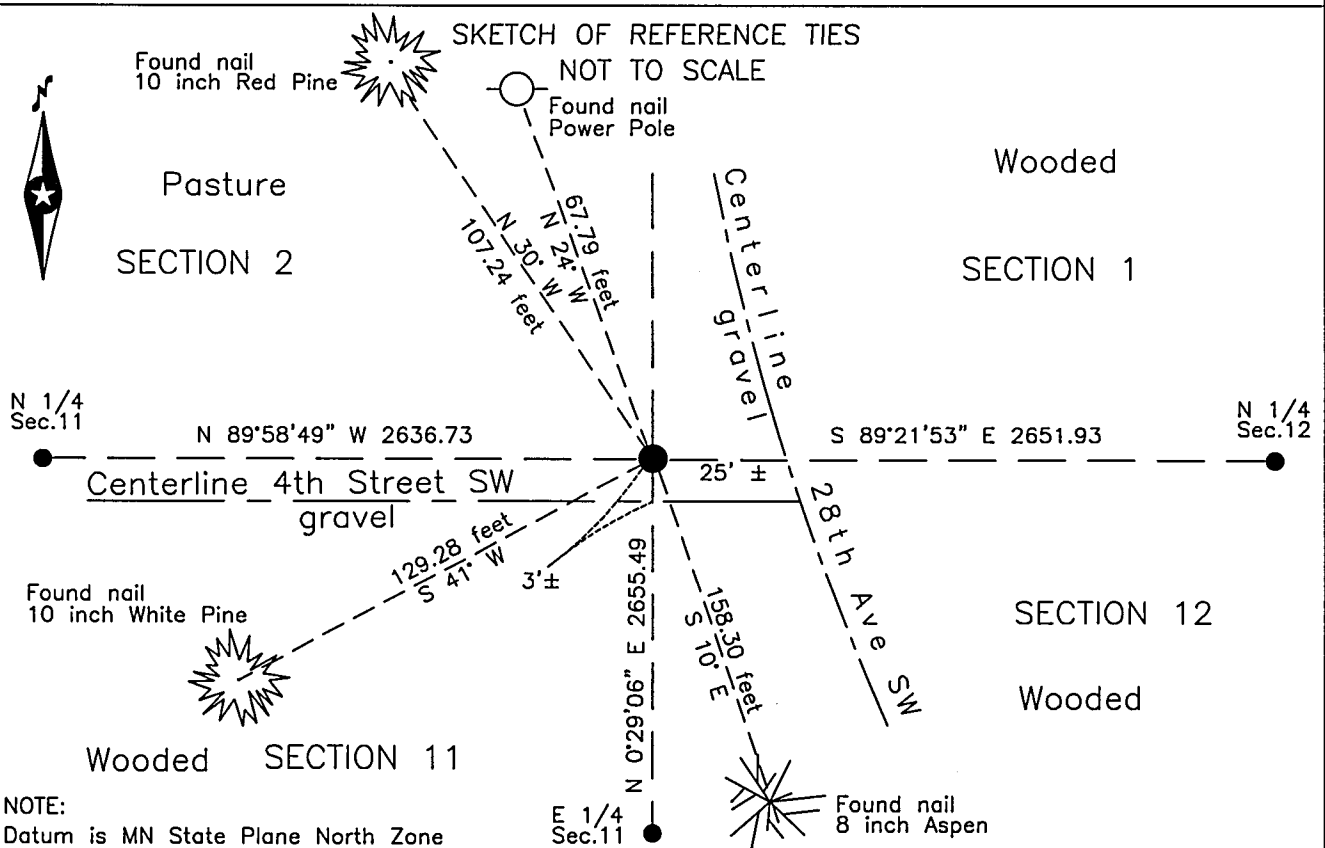
Northeast corner of Section 11, Township 138 N., Range 30 W., 5th P.M.
 State of Minnesota, County of Cass.

At the corner location shown on the sketch:

On 1 July 2014 found _____ a 3/4 inch iron pin.

left monument as found lowered monument removed monument (explain)

On _____ placed _____



NOTE:
 Datum is MN State Plane North Zone

Statement of evidence relative to this corner location is on the back of this page.

I hereby certify that this survey, plan or report was prepared by me or under my direct supervision and that I am a duly Licensed Land Surveyor under the laws of the State of Minnesota.
 I further certify that this United States public land survey monument record is correct and complete to the best of my knowledge and belief.

Robert L. Kovanen
 Date 3/13/15 MN License No. 16459



Index No. E.0-21.0

Statement of Evidence**Northeast corner Section 11, Township 138 North, Range 30 West, 5th Principal Meridian.**

- July 1865 G.B.Wright, GLO Deputy Surveyor, in the notes of the subdivision of Township 138 North, Range 30 West set a post for the original corner and referenced it as follows:
5" Blk Pine N 14 1/2° E 67 links (44.22 feet) 3" White Birch N 47° W 31 links (20.46 feet)
6" Blk Pine S 37° W 39 links (25.74 feet) no tree near in Sec.12
Said records are on file at the Minnesota Historical Society, St. Paul, Minnesota, copies are filed with Cass County Highway Department/Surveyor's Office.
- Circa 1920 Survey Record No, 441, Book C, page 365, on file at Cass County Highway Department/Surveyor's Office, consists of only graphics that depict an iron monument at this corner as well as at the quarter corners north and west; and a distance of 2655.5 feet to the quarter corner common to Sections 11 and 12 to the south. The northeast and southwest corners of Section 2 are also shown to be iron monuments. On file in Cass County Highway Department/Surveyor's Office.
- Circa 1980 Cass County Highway Department, Project Number 11-642-01, notes on file with Cass County Highway Department/Surveyor's Office, indicate an "Assumed" position at Station 291+61.0.
- Aug. 1999 Lee Brown, Westwood Professional Services, St. Cloud office, requested information on Section 1 from the Cass County Highway Department/Surveyor's Office.
- Aug. 2003 B.Grivna, LS 17253, Westwood Professional Services, Brainerd office, Certificate of Survey for Hasty on file at Cass County Highway Department/Surveyor's Office in the Southeast Quarter of Section 2 shows the subject corner as a set monument.
- Nov. 2003 J.Kramer, LS 23668, Kramer, Leas & DeLeo, Brainerd office, performed a survey in the Northwest Quarter of Section 12. The survey on file at Cass County Highway Department/Surveyor's Office indicates the subject corner to be found.
- July 2004 B.Hippen, Cass County survey technician, Cass County survey file #2004.041, found a 7/8 inch outside diameter iron pipe with a mushroomed top, down 0.1 feet on centerline of County State Aid Highway Number 42 extended north and 8 feet northerly of the centerline of 4th Street to the west.
- Oct. 2004 Lee Brown, LS 41886, Westwood Professional Services, St. Cloud office, informed Cass County Highway Department/Surveyor's Office that he placed a 1 inch iron pipe at the subject corner.
- Jun.29 2006 B.Hippen, survey technician and P. Swentkofske, backhoe operator, Cass County employees, made a 16 by 10 by 3 foot deep excavation at the corner position and found no evidence of corner other than the 1 inch iron pipe set by Brown. Notes in Cass County Highway Department/Surveyor's Office survey file #2004.041.
- Aug. 2 2006 B.Hippen, Cass County survey technician, placed a 1-1/8" outside diameter iron pipe at a position controlled in longitude by single proportion between adjacent quarter corners and fixed in latitude by the Survey Record #441 record distance of 2665.5 feet from the quarter corner to the south. Notes in Cass County Highway Department/Surveyor's Office survey file #2004.041.
- July 2014 Northwestern Surveying and Engineering, Inc. (NWSE) crew of Smith and Jackson, recovered and located a 3/4 inch steel pin.
- Nov. 2014 NWSE crew of Bomstad and Williams, witnessed the pin. The monument, recovered and established references for the position are shown on the face of this document.

Analysis of the recovered record data, field evidence and survey measurements, indicates that the position monumented by Cass County in 2006 and recovered by NWSE in 2014 is the accepted location of this corner.