



A000610229

OFFICE OF THE COUNTY RECORDER
CASS COUNTY, MINNESOTA
CERTIFIED, FILED, AND/OR
RECORDED ON

3/19/2015 11:01:26 AM

AS DOC #: A000610229

PAGES: 2

REC FEES: 0.00

KATHRYN M. NORBY
CASS COUNTY RECORDER

BY SR _____ Dep TX#: 121588

Twp 138 Rge 29 Index No. E.0-07.0

CERTIFICATE OF LOCATION OF GOVERNMENT CORNER

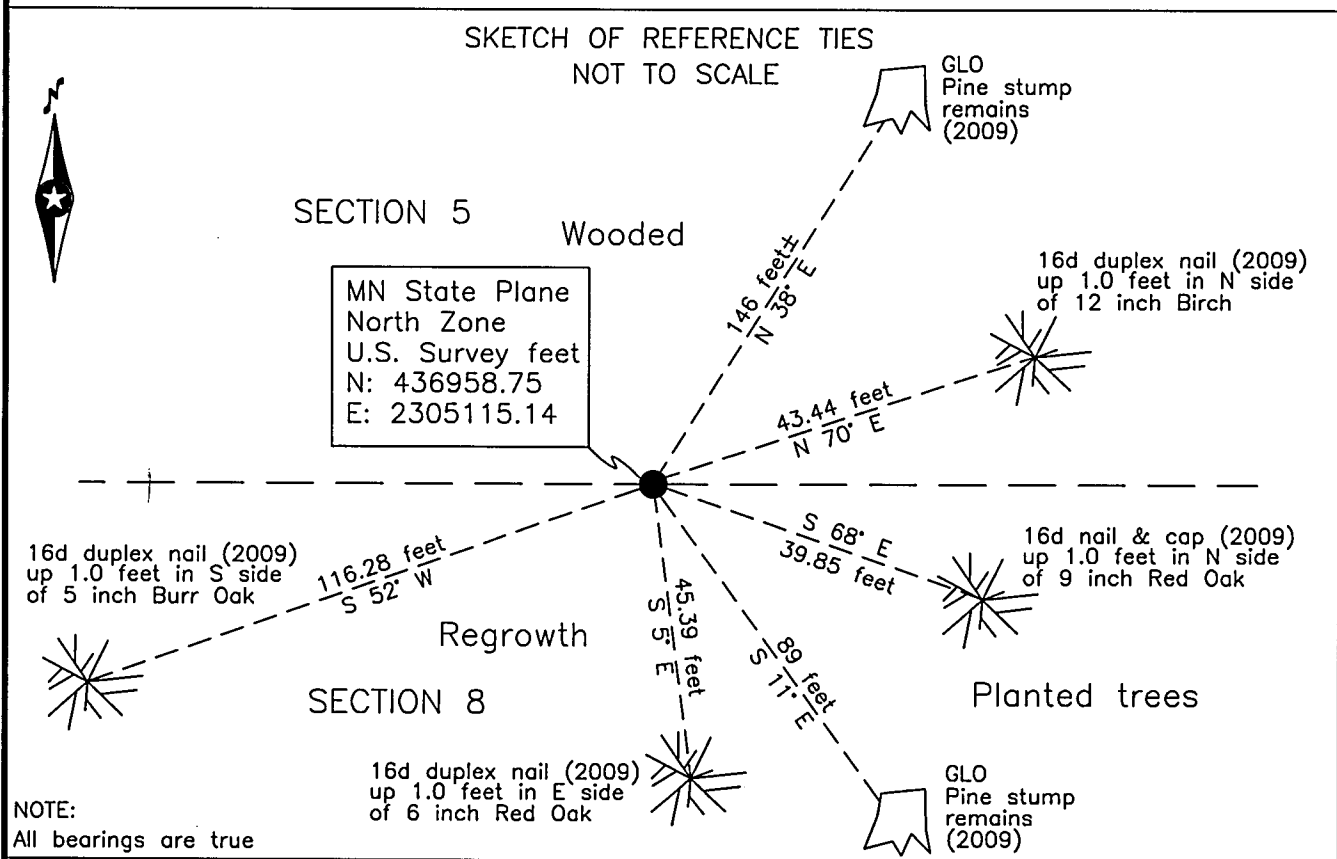
North Quarter corner of Section 8, Township 138 N., Range 29 W., 5th P.M.
State of Minnesota, County of Cass.

At the corner location shown on the sketch:

On 9 Oct. 2009 found a 2.5 inch outside diameter iron pipe, up 0.8 foot in an 8 inch concrete tube. On 30 June 2014 visited and located the corner.

left monument as found lowered monument removed monument (explain)

On _____ placed _____



NOTE:
All bearings are true

Statement of evidence relative to this corner location is on the back of this page.

I hereby certify that this survey, plan or report was prepared by me or under my direct supervision and that I am a duly Licensed Land Surveyor under the laws of the State of Minnesota.
I further certify that this United States public land survey monument record is correct and complete to the best of my knowledge and belief.

Robert L. Kovanen

Date 3/13/15 MN License No. 16459

Page 1 of 2 A000610229



Index No. E.0-07.0

Statement of Evidence

North Quarter corner of Section 8, Township 138 North, Range 29 West, 5th Principal Meridian.

Jul.26, T.B.Walker, General Land Office Deputy Surveyor in the subdivision of Township 138 North, Range 29
1865 West set a post for the original corner and referenced it as follows:
5" BI Pine N 44° E 222 links (146.52 feet) 5" BI Pine S 10° E 135 links (89.10 feet)
Said records are on file at the Minnesota Historical Society, St. Paul, Minnesota, copies are filed with the
Cass County Highway Department/Surveyor's Office.

Oct. 9, B.Hippen, Cass County survey technician, Cass County Highway Department/Surveyor's Office file
2009 2006.033, found a 2.5 inch outside diameter iron pipe, up 0.9 foot, in an 8 inch diameter concrete tube, at
the northeast corner of recent logging and witnessed the same as follows:

| | | | | | |
|------------|---------|------------|------------|---------|-------------|
| Pine stump | N 38° E | 146 feet | Pine stump | S 11° E | 89.3 feet |
| 12" Birch | N 70° E | 43.44 feet | 9" R. Oak | S 68° E | 39.85 feet |
| 6" R. Oak | S 5° E | 45.39 feet | 5" B. Oak | S 52° W | 116.28 feet |

June Northwestern Surveying and Engineering, Inc., crew of Smith and Jackson, recovered and located
2014 a 2-1/2 inch diameter iron pipe, up 8 inches. The monument, recovered and established references for the
position are shown on the face of this document.

Analysis of the recovered record data, field evidence and survey measurements, indicates that the monument
recovered by the NWSE in 2014 is the accepted location of this corner.