



A000609822

OFFICE OF THE COUNTY RECORDER
CASS COUNTY, MINNESOTA
CERTIFIED, FILED, AND/OR
RECORDED ON

2/26/2015 10:39:38 AM

AS DOC #: A000609822

PAGES: 2

REC FEES: 0.00

KATHRYN M. NORBY
CASS COUNTY RECORDER

BY SR _____ Dep TX#: 121230

Page 1 of 2
A000609822

Twp 144 Rge 31 Index No. R.0-17.0

CERTIFICATE OF LOCATION OF GOVERNMENT CORNER

Northeast corner of Section 27, Township 144 N., Range 31 W., 5th P.M.
State of Minnesota, County of Cass

At the corner location shown on the sketch:

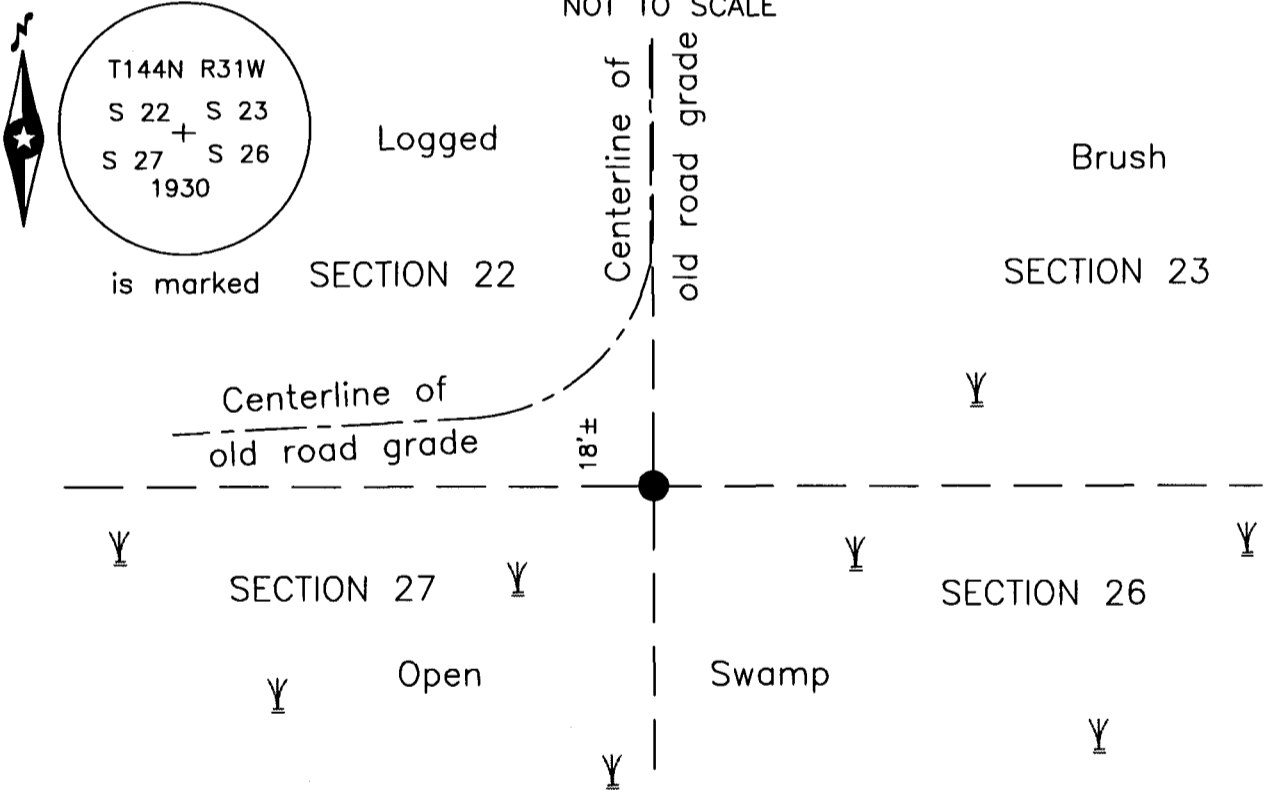
On 8 April 2007 found a 6 inch concrete cylinder with brass cap, down 2.0 feet
under water, 18 feet± South of old road grade.

left monument as found lowered monument removed monument (explain)

On _____ placed _____

Monument

SKETCH OF REFERENCE TIES
NOT TO SCALE



NOTE:
All bearings are true

Statement of evidence relative to this corner location is on the back of this page.

I hereby certify that this survey, plan or report was prepared by me or under my direct supervision and that I am a duly Licensed Land Surveyor under the laws of the State of Minnesota.

Terry L. Freeman, Cass County Surveyor
Date 2/25/15 MN License No. 21367

**Index No. R.0-17.0**Statement of Evidence**Northeast corner of Section 27, Township 144 North, Range 31 West, 5th Principal Meridian.**

Aug. 1875 B.C. Baldwin, General Land Office (GLO) Deputy Surveyor, in the notes of the subdivision of Township 144 North, Range 31 West, set a post for the original corner and referenced it as follows:

10" J. Pine	S 71° E	260 links (171.60 feet)	3" Aspen	N 2° E	272 links (179.52 feet)
30" N. Pine	S 85° E	290 links (191.40 feet)	3" Aspen	N 4° W	250 links (165.00 feet)

The above record is on file with the Minnesota Historical Society in St. Paul, Minnesota, copies are filed with the Cass County Highway Department, Surveyor's Office (CCHD/SO).

Aug. 1922 E.B. Horst, LS 376, Deputy County Surveyor, Survey Record No. 508, Book D, page 67 and Curo Book 186, page 4, on file in the CCHD/SO, states "We find the U.S. B.T's" and "We set a stake at true pint for corner."

Aug. 1930 H.D. Craig, U. S. Surveyor, in the notes of the Dependent Resurvey of a portion of Township 144 North, Range 31 West, set corner "as determined from the remains of the original bearing trees. Set a brass tablet, 3 1/2 ins. Diam., 3 in stem, in a cylindrical concrete form, 24 ins. long, 6 in. diam., 40 ins. in the ground," and referenced it as follows:

8" Poplar	N 36 1/2° E	233 links (153.78 feet)	12" W. Pine	N 13 1/2° W	221 links (145.86 feet)
8" Tamarack	S 28°50' W	472 links (311.52 feet)	9" W. Pine	S 61 1/2° E	283 links (186.78 feet)

Said records are on file with the Minnesota Historical Society in St. Paul, Minnesota, copies are filed with the CCHD/SO.

Nov. 2004 T.L. Freeman, LS 21367, Certificate of Survey, on file in the Landecker and Associates, Inc. (Northern Engineering & Consulting, Inc) Walker Office, indicates GLO brass cap monument found.

April 2007 B.Hippen, technician, records of the CCHD/SO, found 1930 GLO monument, down 2.0 feet, under water, 18 feet, more or less, South of centerline of old road grade. There are no trees near this corner.

Jan. 2015 B. Hippen, technician, records of the CCHD/SO, found the 1930 monument and no trees near this corner. The monument, recovered and established references for the position are shown on the face of this document.

Analysis of the recovered record data, field evidence and survey measurements, indicates that the monument recovered by the CCHD/SO is the correct perpetuation of this corner.

County Coordinates (Cass County North)

Northing 268473.03

Easting 410331.86