



A000609818

OFFICE OF THE COUNTY RECORDER
CASS COUNTY, MINNESOTA
CERTIFIED, FILED, AND/OR
RECORDED ON

2/26/2015 10:39:34 AM

AS DOC #: A000609818

PAGES: 2

REC FEES: 0.00

KATHRYN M. NORBY
CASS COUNTY RECORDER

BY SR Dep TX#: 121230

Page 1 of 2 A000609818

Twp 144 Rge 31 Index No. P.0-13.0

CERTIFICATE OF LOCATION OF GOVERNMENT CORNER

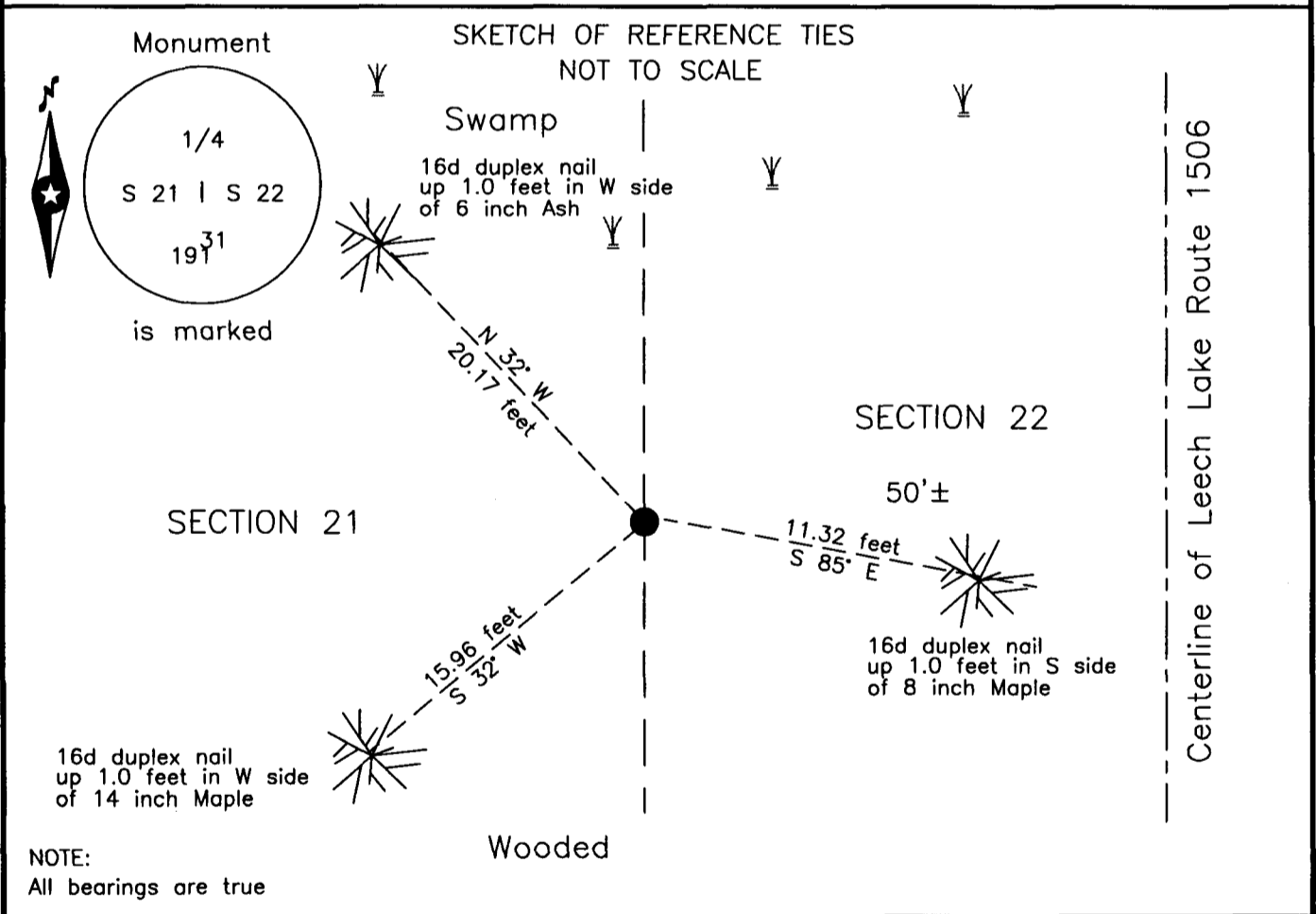
East Quarter corner of Section 21, Township 144 N., Range 31 W., 5th P.M.
State of Minnesota, County of Cass

At the corner location shown on the sketch:

On 19 April 2007 found a 2 inch outside diameter iron pipe with brass cap,
up 0.8 foot, 50'± West of centerline Leech Lake Route 1506.

left monument as found lowered monument removed monument (explain)

On _____ placed _____



Statement of evidence relative to this corner location is on the back of this page.

I hereby certify that this survey, plan or report was prepared by me or under my direct supervision and that I am a duly Licensed Land Surveyor under the laws of the State of Minnesota.

Terry L. Freeman, Cass County Surveyor
Date 2/25/15 MN License No. 21367



Index No. P.0-13.0

Statement of Evidence

East Quarter corner of Section 21, Township 144 North, Range 31 West, 5th Principal Meridian.

- Aug. 1875 B.C. Baldwin, General Land Office (GLO) Deputy Surveyor, in the notes of the subdivision of Township 144 North, Range 31 West, set a post for the original corner and referenced it as follows:
 11" J. Pine S 55° W 45 links (29.70 feet) 8" W. Birch N 88° E 41 links (27.06 feet)
 The above record is on file with the Minnesota Historical Society in St. Paul, Minnesota, copies are filed with the Cass County Highway Department, Surveyor's Office (CCHD/SO).

- Aug. 1922 E.B. Horst, LS 376, Deputy County Surveyor, Survey Record No. 508, Book D, page 64, and Curo Book 186, page 21, on file in the CCSO, states "Which now is: J. P. snag badly burned but bearing the scribe marks: Birch rotted to ground, from which we set a 3"x 3"x 36" Maple post for true ¼ S. cor."

- Aug. 1930 H.D. Craig, U. S. Surveyor, in the notes of the Dependent Resurvey of a portion of Township 144 North, Range 31 West, set corner "as determined from the remains of the original bearing trees. Set an iron post, 3 ft. long, 2 ins. diam., 28 ins. in the ground, for ¼ sec. cor., with brass cap", and referenced it as follows:
 8" B. Oak S 29 1/2° E 73 links (48.18 feet) 14" N. Pine S 89 1/2° W 277 links (182.82 feet)
 Said records are on file with the Minnesota Historical Society in St. Paul, Minnesota, copies are filed with the CCHD/SO.

- April 2007 B. Hippen, technician, records of the CCHD/SO, found of the 1930 GLO monument, up 0.8 foot, 50 feet, more or less West of Leech Lake Route 1506 and witnessed as follows:
 6" Ash N 32° W 20.17 feet 14" Maple S 32° W 15.96 feet
 8" Maple S 85° E 11.32 feet

- Jan. 2015 B. Hippen, technician, records of the CCHD/SO, found the 1930 monument and 2007 witnesses all good. The monument, recovered and established references for the position are shown on the face of this document.

Analysis of the recovered record data, field evidence and survey measurements, indicates that the monument recovered by the CCHD/SO is the correct perpetuation of this corner.

County Coordinates (Cass County North)

Northing 271218.79
Easting 405145.34