



A000609812

OFFICE OF THE COUNTY RECORDER  
CASS COUNTY, MINNESOTA  
CERTIFIED, FILED, AND/OR  
RECORDED ON

2/26/2015 10:39:28 AM

AS DOC #: A000609812

PAGES: 2

REC FEES: 0.00

KATHRYN M. NORBY  
CASS COUNTY RECORDER

BY SR \_\_\_\_\_ Dep TX#: 121230

Page 1 of 2  
A000609812

Twp 144 Rge 31 Index No. E.0-11.0

### CERTIFICATE OF LOCATION OF GOVERNMENT CORNER

North Quarter corner of Section 9, Township 144 N., Range 31 W., 5th P.M.  
State of Minnesota, County of Cass

At the corner location shown on the sketch:

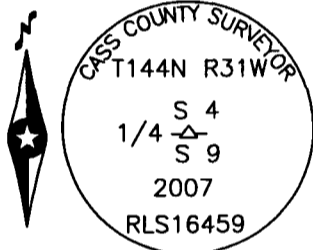
On \_\_\_\_\_ found \_\_\_\_\_

left monument as found     lowered monument     removed monument (explain)

On 16 May 2007 placed a 1 inch by 30 inch aluminum tube, with aluminum cap,  
down 0.5 foot, 3 feet±, South of centerline County Road No. 145.

Monument

SKETCH OF REFERENCE TIES  
NOT TO SCALE

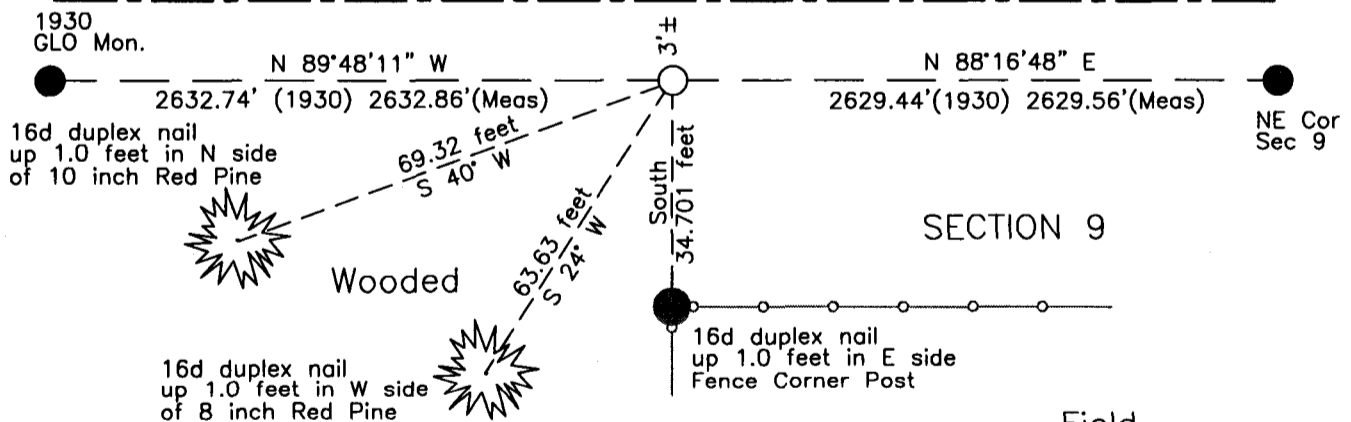


is marked

SECTION 4

Field

Centerline of County Road No. 145



SECTION 9

Field

NOTE:  
All bearings are true

Statement of evidence relative to this corner location is on the back of this page.

I hereby certify that this survey, plan or report was prepared by me or under my direct supervision and that I am a duly Licensed Land Surveyor under the laws of the State of Minnesota.

Terry X. Freeman, Cass County Surveyor  
Date 2/25/15 MN License No. 21367



**Index No. E.0-11.0**

Statement of Evidence

**North Quarter corner of Section 9, Township 144 North, Range 31 West, 5th Principal Meridian.**

- Aug. 1875 B.C. Baldwin, General Land Office (GLO) Deputy Surveyor, in the notes of the subdivision of Township 144 North, Range 31 West, set a post for the original corner and referenced it as follows:  
 8" Elm            S 64° W            20 links (13.20 feet)    5" Br. Oak            N 80° E            59 links (38.94 feet)
- Aug. 1930 H.D. Craig, U. S. Surveyor, in the notes of the Dependent Resurvey of a portion of Township 144 North, Range 31 West, found "a local stake in center of a road. Mr. H. B. Banker, living on the adjoining land in section 4, says he was with the County Surveyor when the above stake was set and that it is at the original position, the trees having since been destroyed. Set an iron post, 3 ft. long, 1 in. diam., 30 ins. in the ground, for the ¼ sec. cor. of secs. 4 and 9, with brass cap". "The possible remains of an original bearing tree" is noted as follows:  
 14" Elm stump    S 73° W            20 links (13.20 feet) rotted to ground.  
 "The remains of a local bearing tree" is noted as follows:  
 12" Oak stump    N 31 3/4° W        103 links (67.98 feet)  
 New references as follows:  
 4" Poplar        S 16° E            3 links ( 1.98 feet)    Fence Cor        S 2° E            48 links (31.68 feet)  
 12" Oak            N 71° W            104.5 links (68.97 feet)  
 The above record is on file with the Minnesota Historical Society in St. Paul, Minnesota, copies are filed with the Cass County Highway Department, Surveyor's Office (CCHD/SO).
- 1979 Cass County Highway Department personnel, Land Corner Record, on file in the CCHD/SO, notes Spk in treated post, down 2", and lists the following references:  
 10" Poplar        N                    34.4 feet                    4" Poplar        NW                    44.3 feet
- May 2007 B. Hippen, technician and P. Swentkofske, backhoe operator, records of the CCHD/SO, while excavating this search area found a 60d spike in a 4 foot post, down 1.0 foot, 2 feet, more or less, south of centerline of County Road No. 145.
- May 2007 B. Hippen, technician, records of the CCHD/SO, set a 1 inch by 30 inch Aluminum tube with aluminum cap at the prorated 1930 position, down 0.5 foot, 3 feet, more or less, east of centerline of County Road No. 145 and witnessed as follows:  
 10" N. Pine        S 40° W            69.32 feet                    Fence Corner            South            34.70 feet  
 8" N. Pine        S 24° W            63.63 feet
- Jan. 2015 B. Hippen, technician, records of the CCHD/SO, found the 2007 monument and witnesses all good. The monument, recovered and established references for the position are shown on the face of this document.

**Analysis of the recovered record data, field evidence and survey measurements, indicates that the monument set by CCHD/SO in 2007 is the accepted location of this corner.**

**County Coordinates (Cass County North)**  
**Northing 284272.18**  
**Easting 402306.33**