

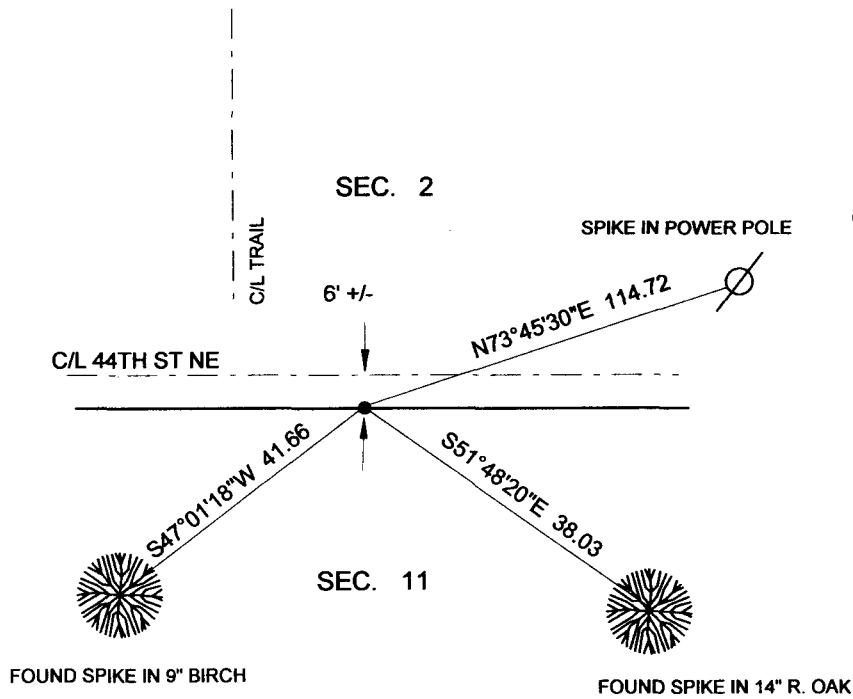
CERTIFICATE OF LOCATION OF GOVERNMENT CORNER

N1/4 Corner of Section 11, Township 140N, Range 26W, 5th p.m., State of Minnesota, County of Cass

At the corner location shown on the sketch:
 On 10 DEC. 2014 found a 1/2" IRON PIPE WITH RLS CAP NO. 24606
 Date

X left monument as found lowered monument removed monument (explain)
 On _____ placed a _____
 Date

SKETCH OF REFERENCE TIES



Tie Distances are measured to the spikes.

Cass County Coordinate System (North Zone)
 N= 158213.07 E= 570863.82

○ Set Re-Rod with RLS cap No. 17774

● Found Pipe



NOT TO SCALE

Statement of evidence relative to this corner location is on back of page.

I hereby certify that this document and the data contained herein was prepared by me or under my direct supervision.

Marvin R. Kohout 11 FEB 2015
 Marvin R. Kohout Date

License No. 17774

Land surveyor

OFFICE OF COUNTY RECORDER



A000609689

**OFFICE OF THE COUNTY RECORDER
 CASS COUNTY, MINNESOTA
 CERTIFIED, FILED, AND/OR
 RECORDED ON**

2/19/2015 10:51:08 AM

AS DOC #: A000609689

PAGES: 2

REC FEES: 0.00

**KATHRYN M. NORBY
 CASS COUNTY RECORDER**

BY SR Dep TX#: 121129

**INDEX NO. E.0-19.0****STATEMENT OF EVIDENCE****NORTH QUARTER CORNER OF SECTION 11, TOWNSHIP 140N, RANGE 26W, 5TH P.M.**

1871 WILLIAM P. ALLEN AND EDGAR P. PUTNAM, DEPUTY GOVERNMENT SURVEYORS,
SET A POST TO MARK THE CORNER LOCATION. REFERENCES:
5" TAM S39W 17.18 FT
6" TAM N7W 15.18 FT

RECORDS ON FILE AT THE MN HISTORICAL SOCIETY, ST. PAUL, AND COPIES FILED
WITH CASS COUNTY HIGHWAY DEPT/SURVEYOR'S OFFICE (CCHD/SO)

1937 CCC AT 2640 FROM EAST SET APPROX. CORNER IN CENTER OF ROAD WASHBURN
LAKE FORESTRY HQ BK 6 PG 5

2001 J. BUNKOWSKE, LS NO. 24606, LANDECKER AND ASSOCIATES, INC., INDICATES ON
HIS CERTIFICATE OF SURVEY THAT HE SET AN IRON MONUMENT TO MARK THE
CORNER LOCATION. CCHD/SO CERTIFICATE OF SURVEY NO.1335

2005 J. BUNKOWSKE, LS. NO. 24606, LANDECKER & ASSOCIATES. INC., INDICATES ON
HIS CERTIFICATE OF SURVEY THAT HE FOUND AN IRON MONUMENT. CCHD, SO
CERTIFICATE OF SURVEY NO. 2680

2014 MARVIN KOHOUT, LS NO. 17774, KOHOUT LAND SURVEYING, SEARCHED FOR AND
FOUND AN IRON MONUMENT WITH RLS CAP 24606. ACCEPTS THE MONUMENT AS
MARKING THE CORNER POSITON. REFERENCES AS SHOWN ON PAGE 1