

CERTIFICATE OF LOCATION OF GOVERNMENT CORNER

E1/4 Corner of Section 19, Township 136N, Range 32W, 5th p.m., State of Minnesota, County of Cass

At the corner location shown on the sketch:

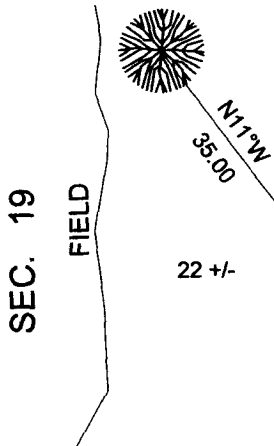
On 4 SEPT. 2014 found a CASS COUNTY MONUMENT RLS 16459, UP 0.5'
Date

X left monument as found lowered monument removed monument (explain)

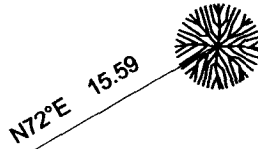
On _____ placed a _____
Date

SKETCH OF REFERENCE TIES

SPIKE IN 12" BURR OAK (2004 TIE)



SPIKE IN 8" BURR OAK (2004 TIE)



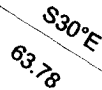
Tie Distances are measured to the spikes.

Cass County Coordinate System (South Zone)
N= 254416.68 E= 426175.69

○ Set Re-Rod with RLS cap No. 17774

● Found Pipe

SEC. 20



SPIKE IN 14" BURR OAK (2004 TIE)



NOT TO SCALE

Statement of evidence relative to this corner location is on back of page.

I hereby certify that this document and the data contained herein was prepared by me or under my direct supervision.

Marvin R. Kohout 8 JAN 2015
Marvin R. Kohout Date

License No. 17774

Land surveyor

OFFICE OF COUNTY RECORDER



A000608873

**OFFICE OF THE COUNTY RECORDER
CASS COUNTY, MINNESOTA
CERTIFIED, FILED, AND/OR
RECORDED ON**

1/15/2015 11:15:49 AM

AS DOC #: A000608873

PAGES: 2

REC FEES: 0.00

**KATHRYN M. NORBY
CASS COUNTY RECORDER**

BY SR Dep TX#: 120485

Page 1 of 2 A000608873



INDEX NO. P.0-05.0

STATEMENT OF EVIDENCE

EAST QUARTER CORNER OF SECTION 19, TOWNSHIP 136N, RANGE 32W, 5TH P.M.

1866 OSCAR E. GARRISON, DEPUTY GOVERNMENT SURVEYOR, SET A POST TO MARK THE CORNER LOCATION. REFERENCES:
10" ASPEN N66W 2.64 FT
8" ASPEN S18 1/2E 18.48 FT

RECORDS ON FILE AT THE MN HISTORICAL SOCIETY, ST. PAUL AND COPIES FILED WITH THE CASS COUNTY HIGHWAY DEPT/SURVEYOR'S OFFICE (CCHD/SO)

2004 CASS COUNTY SURVEYOR'S OFFICE STAFF SET A 1" X 30" ALUMINUM COUNTY MONUMENT, UP .8 FT, IN PLACE OF FENCE CORNER POST, APPROX. 6 FT EAST OF FIELD EDGE. REFERENCES: 10" BURR OAK N 11 W 35.00 FT
8" BURR OAK N 72 E 15.59 FT 10" BURR OAK S 30 E 63.78 FT
CASS CO. HWY DEPT/SURVEYOR'S OFFICE PROJECT 2004.042

2014 MARVIN R. KOHOUT, LS 17774, KOHOUT LAND SURVEYING, AND ADAM HANSON, TECHNICIAN, NORTHWOODS SURVEYING, FOUND THE 2004 MONUMENT AND REFERENCES IN GOOD CONDITION. ACCEPTED THE MONUMENT AS MARKING THE CORNER POSITION.

[Faint, illegible text]