

CERTIFICATE OF LOCATION OF GOVERNMENT CORNER

N1/4 Corner of Section 16, Township 136N, Range 32W, 5th p.m., State of Minnesota, County of Cass

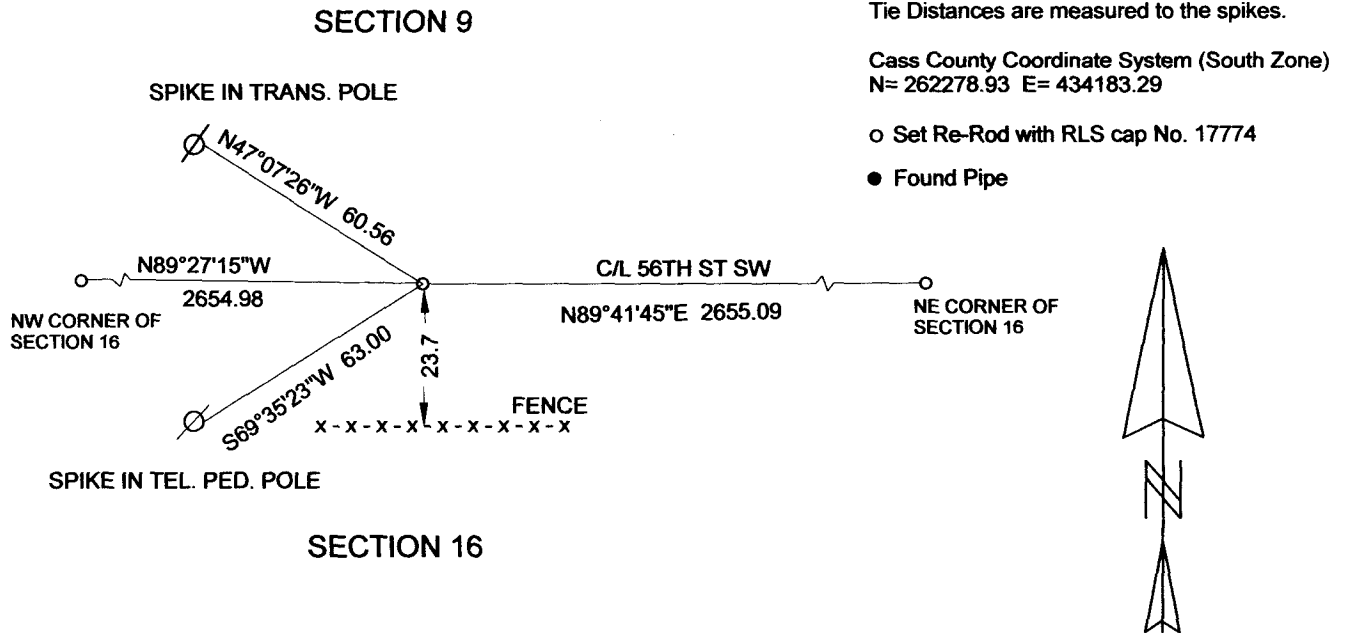
At the corner location shown on the sketch:

On _____ found a _____
Date

left monument as found lowered monument removed monument (explain)

On 31 OCT. 2014 placed a 3/8" DIA. REROD WITH RLS CAP NO. 17774, DOWN 0.20'
Date

SKETCH OF REFERENCE TIES



NOT TO SCALE

Statement of evidence relative to this corner location is on back of page.

I hereby certify that this document and the data contained herein was prepared by me or under my direct supervision.

Marvin R Kohout Jan 2015
Marvin R. Kohout Date

License No. 17774

Land surveyor

OFFICE OF COUNTY RECORDER



A000608867

**OFFICE OF THE COUNTY RECORDER
CASS COUNTY, MINNESOTA
CERTIFIED, FILED, AND/OR
RECORDED ON**

1/15/2015 11:15:43 AM

AS DOC #: A000608867

PAGES: 2

REC FEES: 0.00

**KATHRYN M. NORBY
CASS COUNTY RECORDER**

BY SR Dep TX#: 120485

Page 1 of 2 A000608867



INDEX NO. J.0-11.0

STATEMENT OF EVIDENCE

NORTH QUARTER CORNER OF SECTION 16, TOWNSHIP 136N, RANGE 32W, 5TH P.M.

- 1866 OSCAR E. GARRISON, DEPUTY GOVERNMENT SURVEYOR, SET A POST TO MARK THE CORNER LOCATION. REFERENCES:
 10" BLACK PINE S22E 48.84 FT
 8" BLACK PINE N30 1/2W 45.54 FT

RECORDS ON FILE AT THE MN HISTORICAL SOCIETY, ST. PAUL AND COPIES FILED WITH THE CASS COUNTY HIGHWAY DEPT/SURVEYOR'S OFFICE (CCHD/SO)

- 2014 MARVIN R. KOHOUT, LS 17774, KOHOUT LAND SURVEYING, SEARCHED FOR BUT DID NOT FIND THE CORNER. SET A 3/8" REROD WITH RLS CAP NO. 17774 IN THE CENTERLINE OF AN EAST-WEST ROAD AND MIDWAY BETWEEN THE NW AND NE CORNERS OF SECTION 16. REFERENCES AS SHOWN ON PAGE 1 OF THIS DOCUMENT.

[Faint, illegible text or stamp]