

CERTIFICATE OF LOCATION OF GOVERNMENT CORNER

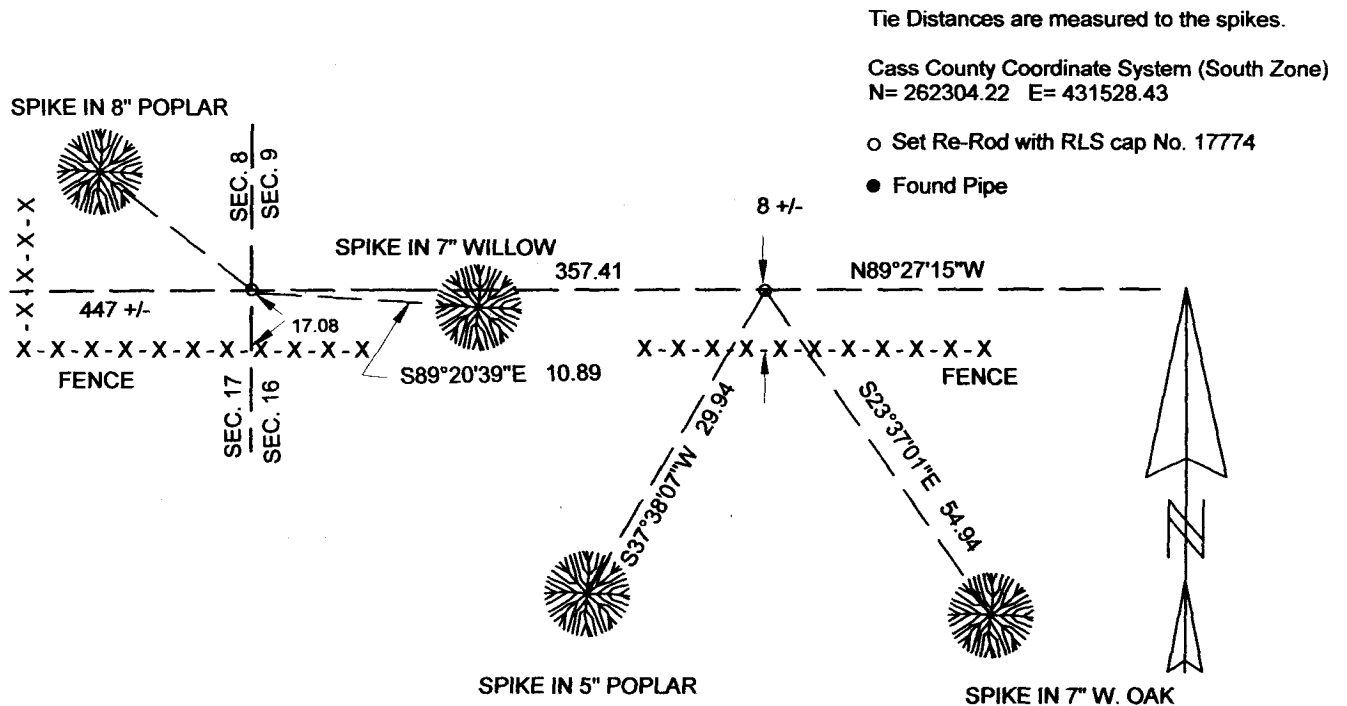
NE Corner of Section 17, Township 136N, Range 32W, 5th p.m., State of Minnesota, County of Cass

At the corner location shown on the sketch:

On _____ found a _____
Date _____

left monument as found	lowered monument	removed monument (explain)
On <u>19 NOV. 2014</u> placed a <u>3/8" DIA. REROD WITH RLS CAP NO. 17774</u>		
Date _____		

SKETCH OF REFERENCE TIES



NOT TO SCALE

Statement of evidence relative to this corner location is on back of page.

I hereby certify that this document and the data contained herein was prepared by me or under my direct supervision.

Marvin R. Kohout 8 Jan 2015
Marvin R. Kohout Date

License No. 17774

Land surveyor

OFFICE OF COUNTY RECORDER



A000608866

**OFFICE OF THE COUNTY RECORDER
CASS COUNTY, MINNESOTA
CERTIFIED, FILED, AND/OR
RECORDED ON**

1/15/2015 11:15:42 AM

AS DOC #: **A000608866**

PAGES: **2**

REC FEES: **0.00**

**KATHRYN M. NORBY
CASS COUNTY RECORDER**

BY SR Dep TX#: **120485**

Page 1 of 2 A000608866



INDEX NO. J.0-11.0

STATEMENT OF EVIDENCE

NORTH QUARTER CORNER OF SECTION 16, TOWNSHIP 136N, RANGE 32W, 5TH P.M.

- 1866 OSCAR E. GARRISON, DEPUTY GOVERNMENT SURVEYOR, SET A POST TO MARK THE CORNER LOCATION. REFERENCES:
 10" BLACK PINE S22E 48.84 FT
 8" BLACK PINE N30 1/2W 45.54 FT

RECORDS ON FILE AT THE MN HISTORICAL SOCIETY, ST. PAUL AND COPIES FILED WITH THE CASS COUNTY HIGHWAY DEPT/SURVEYOR'S OFFICE (CCHD/SO)

- 2014 MARVIN R. KOHOUT, LS 17774, KOHOUT LAND SURVEYING, SEARCHED FOR BUT DID NOT FIND THE CORNER. SET A 3/8" REROD WITH RLS CAP NO. 17774 IN THE CENTERLINE OF AN EAST-WEST ROAD AND MIDWAY BETWEEN THE NW AND NE CORNERS OF SECTION 16. REFERENCES AS SHOWN ON PAGE 1 OF THIS DOCUMENT.

[Faint, illegible text]