

Page 1 of 2 A000608745



A000608745

OFFICE OF THE COUNTY RECORDER  
CASS COUNTY, MINNESOTA  
CERTIFIED, FILED, AND/OR  
RECORDED ON

1/12/2015 9:54:20 AM

AS DOC #: A000608745

PAGES: 2

REC FEES: 0.00

KATHRYN M. NORBY  
CASS COUNTY RECORDER

BY SR \_\_\_\_\_ Dep TX#: 120394

Twp 139 Rge 27 Index No. A.0-19.0

### CERTIFICATE OF LOCATION OF GOVERNMENT CORNER

North Quarter Corner of Section 2, Township 139 N., Range 27 W., 5th P.M.  
State of Minnesota, County of Cass

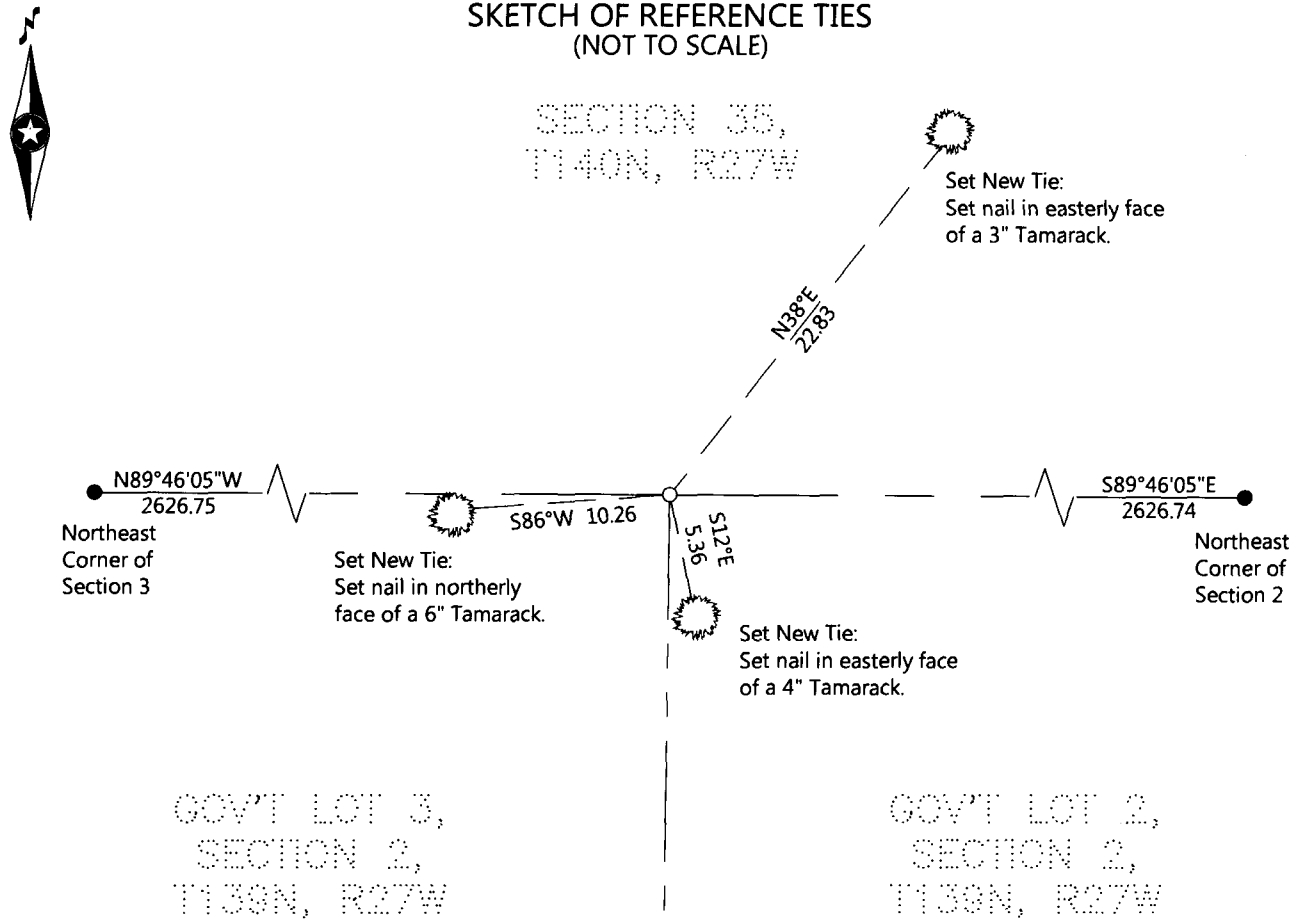
At the corner location shown on the sketch:

On \_\_\_\_\_ found \_\_\_\_\_

- left monument as found
- lowered monument
- removed monument (explain)

On 10-10-2014 placed \_\_\_\_\_ a 4' long 5/8" diameter rebar with a 2-1/2" cap,  
stamped "DICKERSON NECI RLS# 47544.

#### SKETCH OF REFERENCE TIES (NOT TO SCALE)



NOTE: All bearings are true.

Statement of evidence relative to this corner location is on the back of this page.

I hereby certify that this survey, plan, or report was prepared by me or under my direct supervision and that I am a duly Licensed land Surveyor under the laws of the State of Minnesota. I further certify that this United States public land survey monument record is correct and complete to the best of my knowledge and belief.

Joshua M. Dickerson, Land Surveyor

Date 1/9/15 MN License No. 47544

Index No. A.0-19.0**STATEMENT ON EVIDENCE****North Quarter Corner of Section 2, Township 139 North, Range 27 West of the 5th Principal Meridian.**

In 1863, Johnson and Thornton, U.S. Deputy Surveyors, set a wood post to mark the corner location while marking the north line of the township and established bearing trees as follows: a 4" Tamarack N 81 1/2° W 35 links; a 4" Tamarack S 22° W 14 links;

Record on file with the Minnesota Historical Society in St. Paul, MN and copies filed with the Cass County Highway Department, Surveyors Office (CCHD/SO).

In 1936, Civilian Conservation Corps, Washburn Lake Book #7, Page 19, shows that they found a 3" stake 39.93 chains from the east, which falls 0.48 chains south of random line.

Information on file in the CCHD/SO.

On October 10, 2014, a Northern Engineering & Consulting survey crew searched for corner and finding nothing, determined corner to be lost. They set a 4 foot rebar with 2 1/2" cap stamped RLS 47544 at the single proportion position between the recovered NW and NE corners of Section 2. They marked 3 new ties as shown on the front of this certificate. The monument set is accepted as marking the lost position of the original corner.

**County Coordinates (Cass County North)**

Northing	131778.76
Easting	539059.46