



A000608686

OFFICE OF THE COUNTY RECORDER
CASS COUNTY, MINNESOTA
CERTIFIED, FILED, AND/OR
RECORDED ON

1/7/2015 12:33:23 PM

AS DOC #: A000608686

PAGES: 2

REC FEES: 0.00

KATHRYN M. NORBY
CASS COUNTY RECORDER

BY MW Dep TX#: 120313

Twp 142 Rge 27 Index No. B.0-04.0

CERTIFICATE OF LOCATION OF GOVERNMENT CORNER

NE Sixteenth corner of Section 6, Township 142 N., Range 27 W., 5th P.M.

State of Minnesota, County of Cass

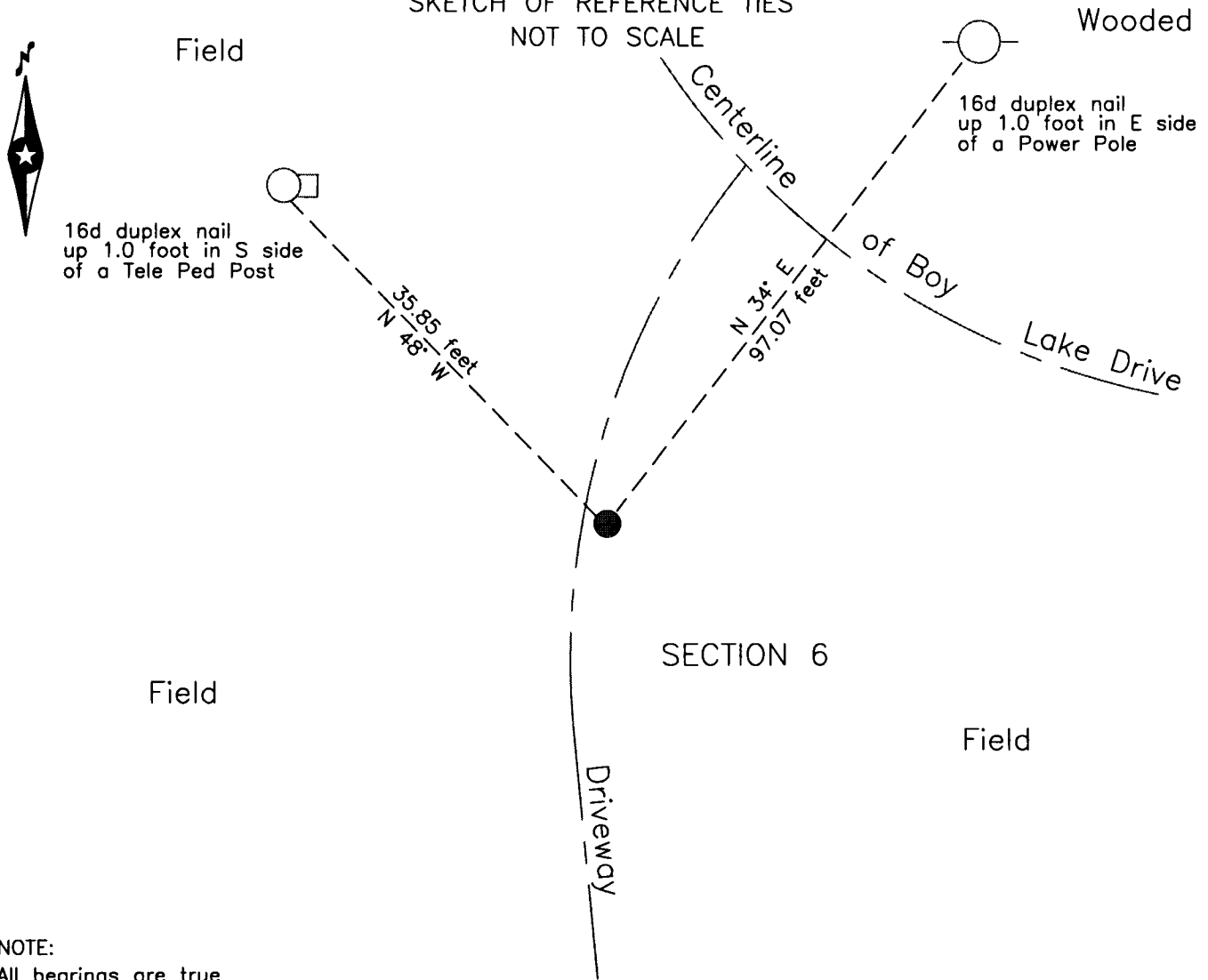
At the corner location shown on the sketch:

On 28 July 2009 found the flared base of a 1 inch outside diameter iron pipe,
down 2.0 feet in a driveway.

left monument as found lowered monument removed monument (explain)

On 28 July 2009 placed a 7/8 inch outside diameter iron pipe over base,
down 0.5 foot.

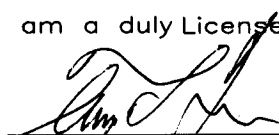
SKETCH OF REFERENCE TIES
NOT TO SCALE



NOTE:
All bearings are true

Statement of evidence relative to this corner location is on the back of this page.

I hereby certify that this survey, plan or report was prepared by me or under my direct supervision and that I am a duly Licensed Land Surveyor under the laws of the State of Minnesota.


Terry L. Freeman, Cass County Surveyor
Date 1/7/15 MN License No. 21367





Index No. B.0-04.0

Statement of Evidence

North East One Sixteenth corner Section 6, Township 142 North, Range 27 West, 5th Principal Meridian.

1920 E.G. Harrington, U.S. Cadastral Engineer, assisted by D.B. Clement, U.S. Surveyor, GLO, Reestablishment of a portion of the Exteriors and Subdivisional Lines Township 142 North, Range 27 West, on file with the Minnesota Historical Society in St. Paul, Minnesota, copies are filed with the CCHD/SO, states "Set an iron post, 3 ft. long, 1 ins. diam., 26 ins. in the ground, for the NE. 1/16 sec. cor. with brass cap". Lists the following witnesses:
10" Cedar S 41 3/4° E 188 links(124.08 feet) 10" Birch N 14 1/4° W 54 links (35.64 feet)

July B. Hippen, technician and P. Swentkofske, Cass County Highway Department equipment operator, records of the
2009 CCHD/SO, in excavating this search area recovered the flared base of the 1 inch GLO monument 2 feet below driveway surface. Set a 7/8 inch outside diameter iron pipe over this base, down 0.5 foot, near PI of centerline of Boy Lake Drive and witnessed as follows:
Tele Ped Post N 48° W 35.85 feet Power Pole N 34° E 97.07 feet

Dec. B. Hippen, technician, records of the CCHD/SO, found the 2009 iron pipe and witnesses all good. The monument,
2014 recovered and established references for the position are shown on the face of this document.

Analysis of the recovered record data, field evidence and survey measurements, indicates that the monument recovered by CCHD/SO in 2009 is the accepted location of this corner.

County Coordinates (Cass County North)

Northing 226275.44

Easting 518521.84