

Page 1 of 2 A000608580



A000608580

OFFICE OF THE COUNTY RECORDER  
CASS COUNTY, MINNESOTA  
CERTIFIED, FILED, AND/OR  
RECORDED ON

12/30/2014 11:02:50 AM

AS DOC #: A000608580

PAGES: 2

REC FEES: 0.00

KATHRYN M. NORBY  
CASS COUNTY RECORDER

BY SR \_\_\_\_\_ Dep TX#: 120208

Twp 139 Rge 29

Index No. B.7-9.0

### CERTIFICATE OF LOCATION OF GOVERNMENT CORNER

Meander Corner #62 of Section 5, Township 139 N., Range 29 W., 5th P.M.  
State of Minnesota, County of Cass

At the corner location shown on the sketch:

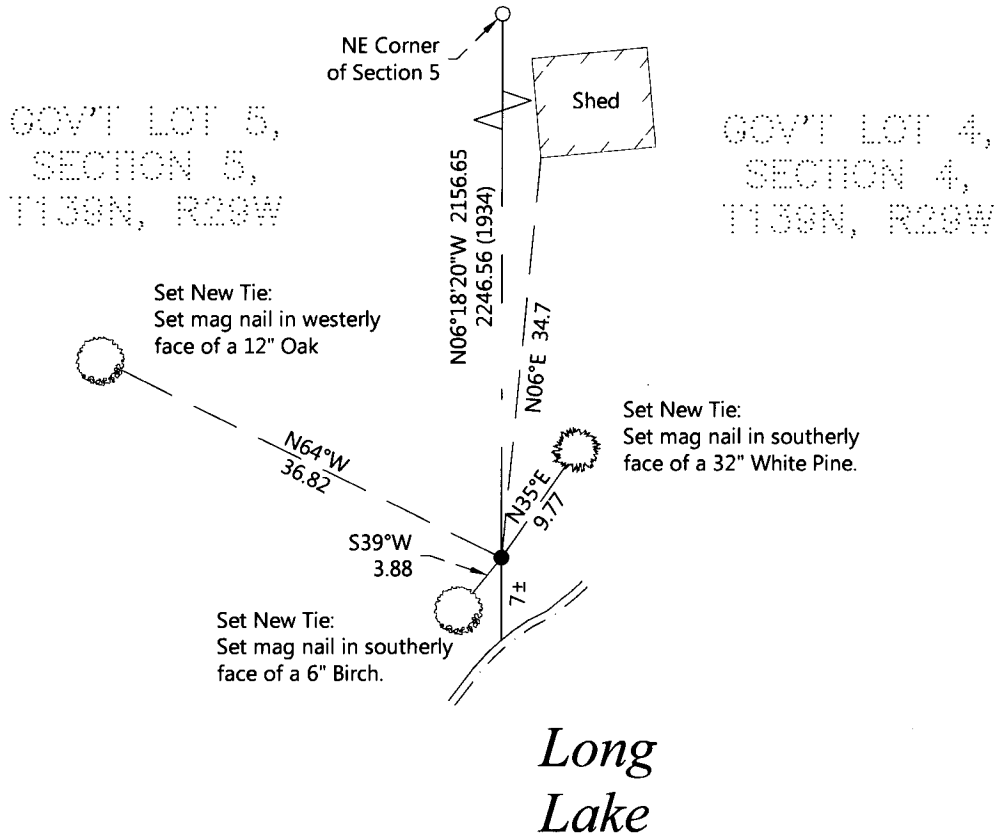
On 05-06-2014 found a 2" x 2" perforated square metal post with a 2-3/4" square aluminum cap,  
1' above ground surface.

left monument as found     lowered monument     removed monument (explain)

On \_\_\_\_\_ placed \_\_\_\_\_



#### SKETCH OF REFERENCE TIES (NOT TO SCALE)



NOTE: All bearings are true.

Statement of evidence relative to this corner location is on the back of this page.

I hereby certify that this survey, plan, or report was prepared by me or under my direct supervision and that I am a duly Licensed land Surveyor under the laws of the State of Minnesota. I further certify that this united States public land survey monument record is correct and complete to the best of my knowledge and belief.

Joshua M. Dickerson, Land Surveyor

Date 12/29/14

MN License No. 47544



Index No.     B.7-9.0    

**STATEMENT ON EVIDENCE**

**Meander Corner #62 of Section 5, Township 139 North, Range 29 West of the 5th Principal Meridian.**

In 1865, George B. Wright and Thomas B. Walker, U.S. Deputy Surveyors, set a wood post to mark the corner location and established the bearing tree as follows: a 14" White Pine N 01° E 108 links.  
Record on file with the Minnesota Historical Society in St. Paul, MN and copies filed with the Cass County Highway Department, Surveyors Office (CCHD/SO).

In 1934, John Curo, RLS 1428, County Surveyor, in Curo Book 226, page 117, 121, & 125 shows that he found the stump of the old BT. He set a 2x30" iron and recorded the following ties: a 14" Norway Pine N 63° 30' E 16.90 feet; a 10" White Pine N 37° 30' E 9.60 feet; an 8" Oak S 84° W 70.40 feet; and an old U.S. BT stump N 01° E 71.28 feet.  
Information on file in the CCHD/SO.

In 1984, Myron Landecker, RLS 7452, records a Certificate of Location of Government Corner, Doc. #276693. He shows that in 1981 he found a 2" iron pipe up 0.40 feet and set a 2x2x36" County monument with stamped aluminum cap and marked BT's: a 16" Norway Pine N 60° E 17.85 feet; an 18" White Pine N 35° E 10.15 feet; a 7" Red Oak N 60° W 37.00 feet; and a 6" Ash S 50° W 22.95 feet.

On May 6, 2014, a Northern Engineering & Consulting survey crew found the aluminum capped monument. They found and marked ties as shown on the front of this certificate. The found monument was accepted as a perpetuation of the original corner.

**County Coordinates (Cass County North)**

Northing      130190.59  
Easting        463495.34