



A000608523

OFFICE OF THE COUNTY RECORDER
CASS COUNTY, MINNESOTA
CERTIFIED, FILED, AND/OR
RECORDED ON

12/26/2014 12:47:31 PM

AS DOC #: A000608523

PAGES: 2

REC FEES: 0.00

KATHRYN M. NORBY
CASS COUNTY RECORDER

BY SR _____ Dep TX#: 120163

Page 1 of 2
A000608523

Twp 140 Rge 26 Index No. X.0-09.0

CERTIFICATE OF LOCATION OF GOVERNMENT CORNER

East Quarter corner of Section 32, Township 140 N., Range 26 W., 5th P.M.
State of Minnesota, County of Cass

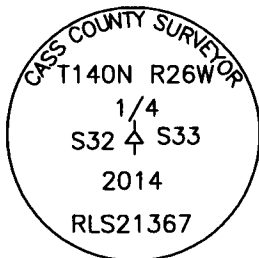
At the corner location shown on the sketch:

On 21 Aug 2008 found a 24 inch Burr Oak stump and remains of a charred
stake at GLO bearing and distance from the stump.

left monument as found lowered monument removed monument (explain)

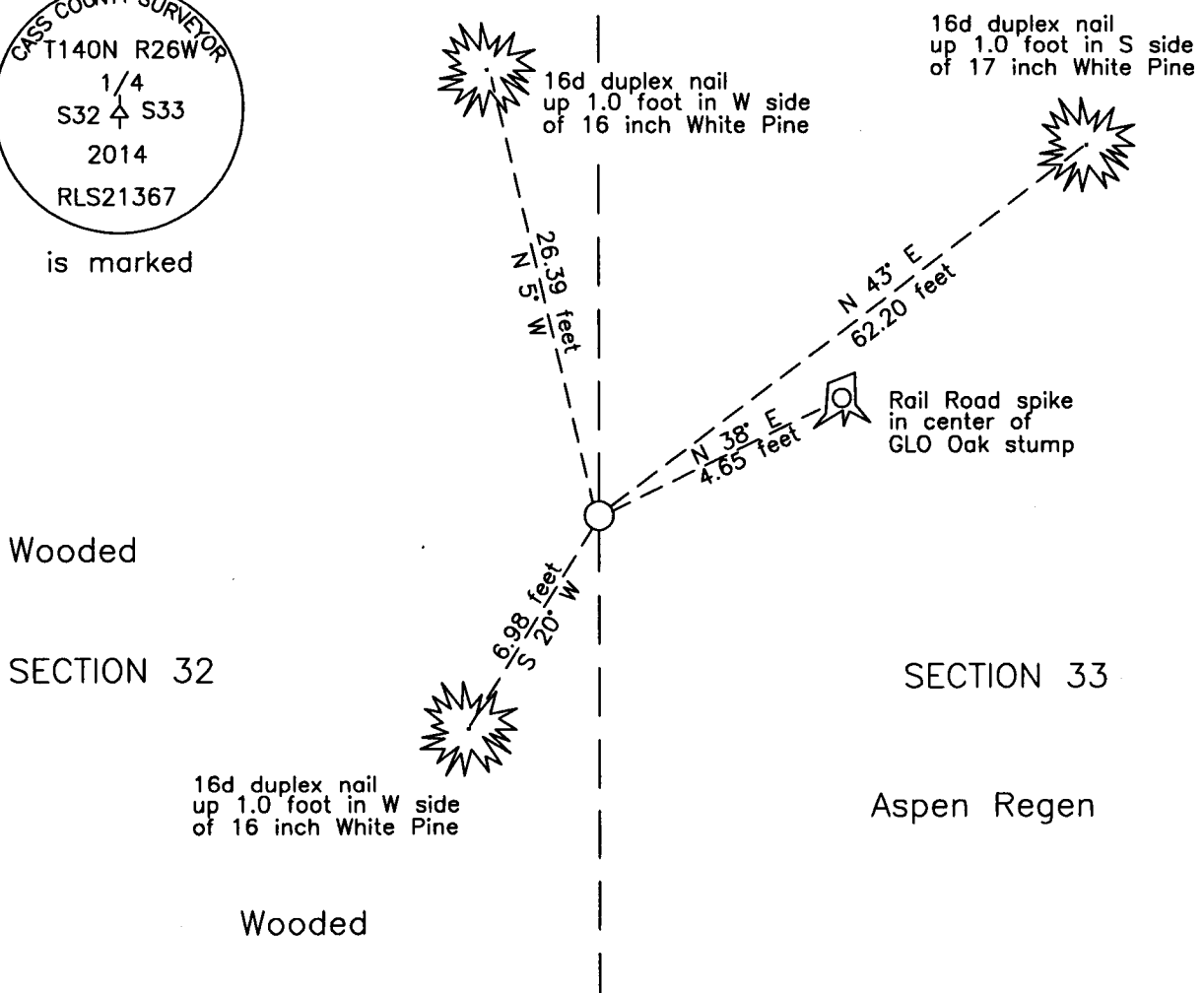
On 19 Dec 2014 placed an 1 inch by 30 inch aluminum tube with aluminum cap,
up 1.0 foot, at the stake location.

Monument



is marked

SKETCH OF REFERENCE TIES NOT TO SCALE



NOTE:
All bearings are true

Statement of evidence relative to this corner location is on the back of this page.

I hereby certify that this survey, plan or report was prepared by me or under my direct supervision and that I am a duly Licensed Land Surveyor under the laws of the State of Minnesota.

Terry L. Freeman, Cass County Surveyor
Date 12/24/14 MN License No. 21367



Statement of Evidence

East Quarter corner of Section 32, Township 140 North, Range 26 West, 5th Principal Meridian.

May 1871 Allen and Putnam, General Land Office (GLO) Deputy Surveyors, notes for the subdivision of Township 140 North, Range 26 West, set a post for the original corner and referenced it as follows:

5" Oak N 45° E 6 links (3.96 feet) 6" Aspen N 10° W 10 links (6.60 feet)

The above record is on file with the Minnesota Historical Society in St. Paul, Minnesota, copies are filed with the Cass County Highway Department, Surveyor's Office (CCHD/SO).

Sept. 2001 M.R. Kohout, LS 17774, Proposed Lot Layout, on file in the CCHD/SO, indicates an Iron monument found at the subject corner.

Aug. 2008 B. Hippen, technician, records of the CCHD/SO, found a 24 inch Burr Oak stump, recently cut, with about 15 rings per inch, making this tree approximately 180 year old, also remains of charred wood and a stake, about 3 feet long and horizontal, southwest of stump.

Dec. 2014 B. Hippen, technician, records of the CCHD/SO, set a 1 inch by 30 inch aluminum tube with aluminum cap, up 1.0 foot, at wood stake position and witnessed as follows:

RR spike in GLO Oak stump	N 38° E	4.65 feet	17" W. Pine	N 43° E	62.20 feet
16" W. Pine	S 20° W	6.98 feet	16" W. Pine	N 5° W	26.39 feet

The recovered and established witnesses for this corner position are shown on the face of this document.

Analysis of the recovered record data, field evidence and survey measurements, indicates that the monument set in 2014 by the CCHD/SO, is the correct perpetuation of this corner.

County Coordinates (Cass County North)

Northing 134423.50

Easting 557472.24