



A000608286

OFFICE OF THE COUNTY RECORDER  
CASS COUNTY, MINNESOTA  
CERTIFIED, FILED, AND/OR  
RECORDED ON

12/18/2014 10:49:10 AM

AS DOC #: A000608286

PAGES: 2

REC FEES: 0.00

KATHRYN M. NORBY  
CASS COUNTY RECORDER

BY SR Dep

Twp 142 Rge 27 Index No. C.0-05.0

# CERTIFICATE OF LOCATION OF GOVERNMENT CORNER

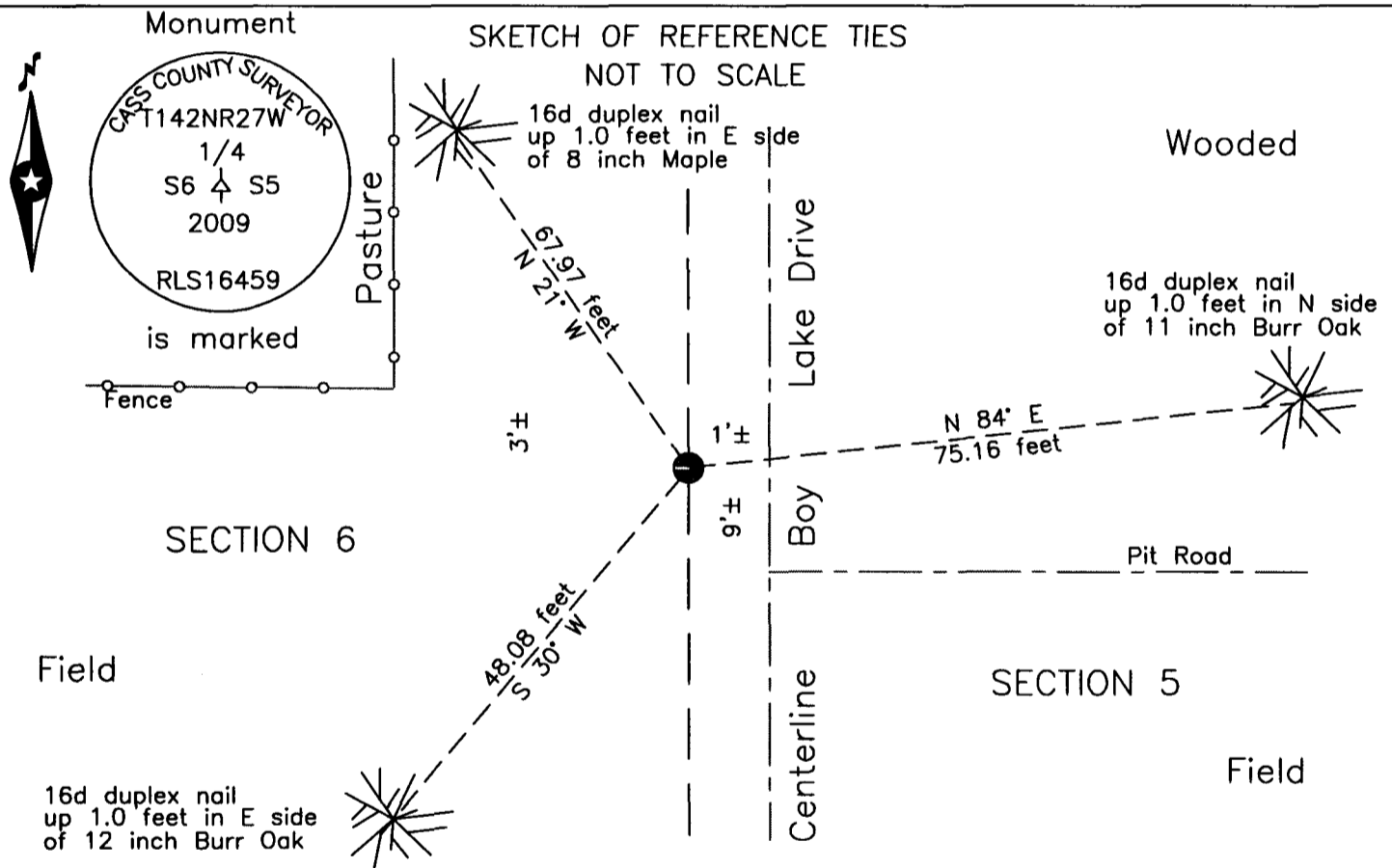
East Quarter Corner of Section 6, Township 142 N., Range 27 W., 5th P.M.  
State of Minnesota, County of Cass

At the corner location shown on the sketch:

On 28 July 2009 found remains of Cedar post, down 2.0 feet, 3 feet± west  
of centerline of Boy Lake Drive.

left monument as found     lowered monument     removed monument (explain)

On 28 July 2009 placed a 1 inch by 30 inch Aluminum tube with aluminum cap  
down 0.4 foot 3 feet± west of centerline of Boy Lake Drive.



NOTE:  
All bearings are true

Statement of evidence relative to this corner location is on the back of this page.

I hereby certify that this survey, plan or report was prepared by me or under my direct supervision and that I am a duly Licensed Land Surveyor under the laws of the State of Minnesota.

Terry L. Freeman, Cass County Surveyor  
Date 12/17/14 MN License No. 21367





Statement of Evidence

East Quarter corner Section 6, Township 142 North, Range 27 West, 5th Principal Meridian.

Nov. 1873 P.H. Conger, GLO Deputy Surveyor, in the notes of the subdivision Townships 142 North, Range 27 West, set a post for the original corner and referenced it as follows:  
7" Poplar N 20° W 30 links (19.80 feet) 9" Birch S 34° W 25 links (16.50 feet)  
The above record is on file with the Minnesota Historical Society in St. Paul, Minnesota, copies are filed with the Cass County Highway Department, Surveyor's Office (CCHD/SO).

Circa 1903 H. Dunaway, Surveyor, United States Army, Corps of Engineers (COE), T142N R27W Leech Lake Reservoir Map, on file with the United States Department of Agriculture, Forest Service (USFS) offices in Cass Lake, MN, by symbol indicates this to be a known corner.

April, 1915 Final Road Order of Town Board, on file at the Cass County Highway Department, describes a road on the East line of Sections 6, 7 and 18.

1920 E.G. Harrington, U.S. Cadastral Engineer, assisted by D.B. Clement, U.S. Surveyor, GLO, Reestablishment of a portion of the Exteriors and Subdivisional Lines Township 142 North, Range 27 West, states "The ¼ sec. cor., which is marked by a cedar stake set at end of road. North and alongside of stake, I set an iron post, 3 ft. long, 1 ins. diam., 26 ins. in the ground, for the ¼ sec. cor. with brass cap", also "The original bearing trees have been cut out but was told that both of the trees were standing when the road was built." The following new witnesses are listed:  
10" Maple N 34°15' E 128 links (84.48 feet) 12" Maple S 88°15' W 39 links (25.74 feet)  
The above record is on file with the Minnesota Historical Society in St. Paul, Minnesota, copies are filed with the CCHD/SO.

Aug. 1921 Survey Record Book C, Record No. 462, page 434, on file in the CCHD/SO, pictorial indicates I.M. set by U.S.G.L.O. Survey.

April 1995 G. Brama, technician, United States Department of Agriculture Forest Service (USFS), T 142 N R 27 W Book 3, page 27, on file in the USFS Cass Lake Office, states "String chained from A.P. 4 along fence line GLO distance of 647.5. Distance fell in the west center of N-S graveled road. Fd no evidence of iron."

July 2009 B. Hippen, technician and P. Swentkofske, Cass County Highway Department equipment operator, records of the CCHD/SO, in excavating this search area recovered a tapered 3 ½" diameter cedar post point, 24" long and clearly bearing axe marks. The post was down 2' and leaning close to horizontal. Set a 1 inch outside diameter by 30 inch long aluminum tube with aluminum cap, down 0.4 foot, 3 feet, more or less, West of centerline of Boy Lake Drive and witnessed as follows:  
8" Maple N 21° W 67.97 feet 11" B. Oak N 84° E 75.16 feet  
12" B. Oak S 35° W 60.95 feet

Dec. 2014 B. Hippen, technician, records of the CCHD/SO, set a mag nail, 1 foot, more or less, West of the new centerline of Boy Lake Drive, the 2009 witnesses are all good.  
The monument, as well as the recovered and established references for the position are shown on the face of this document.

**Analysis of the recovered record data, field evidence and survey measurements, indicates that the monument set by the CCHD/SO in 2009 is the correct perpetuation of this corner.**

County Coordinates (Cass County North)  
Northing 225015.40  
Easting 519826.72