



A000608281

OFFICE OF THE COUNTY RECORDER
CASS COUNTY, MINNESOTA
CERTIFIED, FILED, AND/OR
RECORDED ON

12/18/2014 10:49:05 AM

AS DOC #: A000608281

PAGES: 2

REC FEES: 0.00

KATHRYN M. NORBY
CASS COUNTY RECORDER

BY SR Dep

Twp 139 Rge 29 Index No. L.0-25.0

CERTIFICATE OF LOCATION OF GOVERNMENT CORNER

East Quarter corner of Section 13, Township 139 N., Range 29 W., 5th P.M.
State of Minnesota, County of Cass

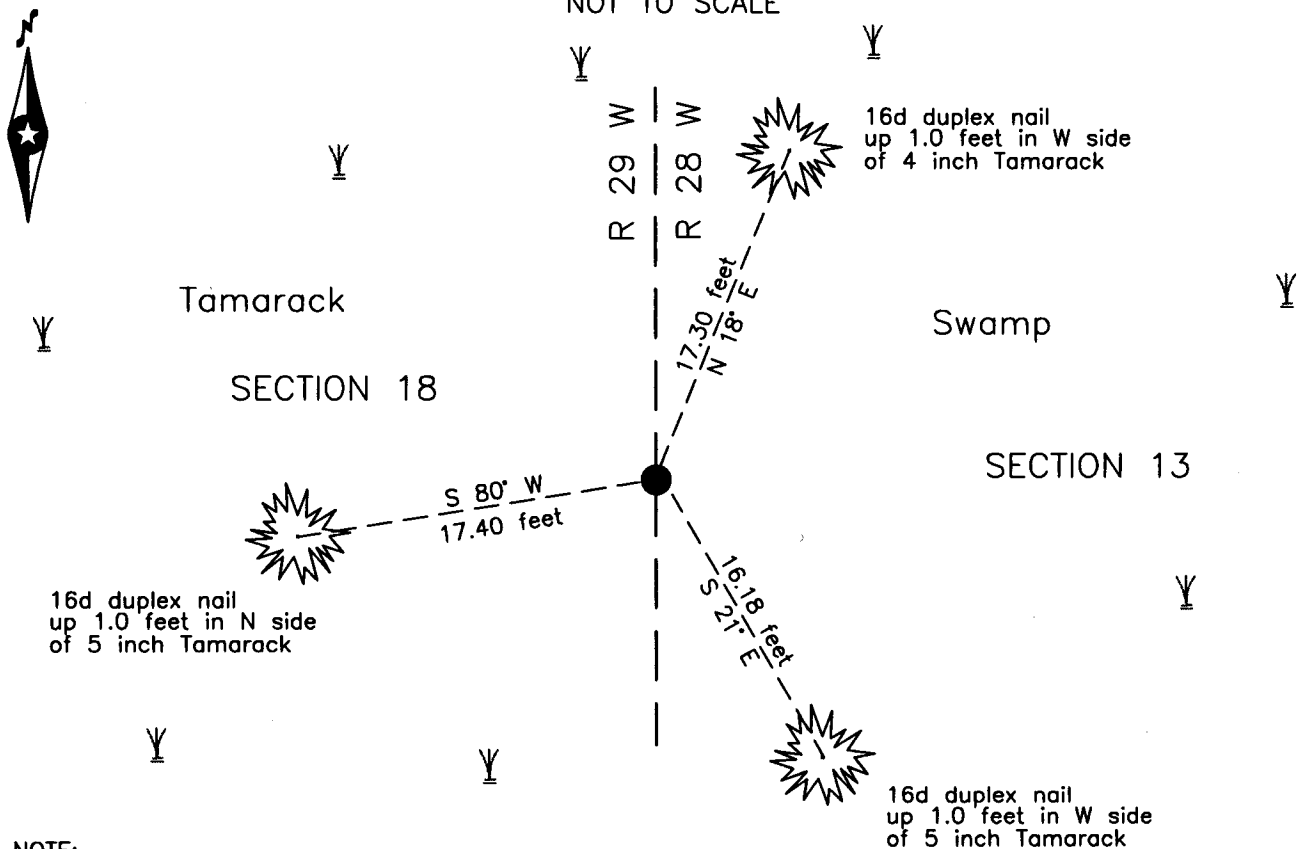
At the corner location shown on the sketch:

On 12 Dec. 2014 found a 2 inch outside diameter iron pipe, up 3.0 feet, in a
Tamarack swamp.

left monument as found lowered monument removed monument (explain)

On _____ placed _____

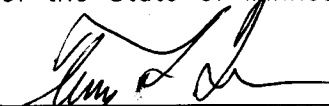
SKETCH OF REFERENCE TIES
NOT TO SCALE



NOTE:
All bearings are true

Statement of evidence relative to this corner location is on the back of this page.

I hereby certify that this survey, plan or report was prepared by me or under my direct supervision and that I am a duly Licensed Land Surveyor under the laws of the State of Minnesota.


Terry E. Freeman, Cass County Surveyor
Date 12/17/14 MN License No. 21367





Statement of Evidence

East Quarter corner Section 13, Township 139 North, Range 29 West, 5th Principal Meridian.

- Aug. 1865 Geo. Wright, General Land Office (GLO) Deputy Surveyor, notes for the subdivision of Township 139 North, Range 29 West, set a post for the original corner and referenced it as follows:
 4" Tamarack S 75° E 24 links (15.84 feet) 4" Tamarack N 79° W 28 links (18.48 feet)
 The above record is on file with the Minnesota Historical Society in St. Paul, Minnesota, copies are filed with the Cass County Highway Department, Surveyor's Office (CCHD/SO).

- Oct. 1919 B.F. Clark, LS 231, Deputy County Surveyor, Survey Record No. 434, Book C, page 327, on file in the CCHD/SO states they ran north "At 5274 ft. found a Tam. Post 4 ft. long 4 in. Then search for witness trees and found 2 Tam. Posts marked ¼ S. with a Surveyor marking iron and 2 down Tam. In the marsh." He lists these as the GLO witness trees and "being satisfied this is the old gov't ¼ S. corner on west side S. 18. I set an iron pipe with wooden point in side and drove the same in the ground 6 ft. Then made 2 new witness trees":
 5" Tamarack S 49° W 19.5 feet 5" Tamarack N 38° E 93 feet

- March 1922 B.F. Clark, LS 231, County Resurvey Plat, on file in the Cass County Recorders Office, as Document Number 69797, indicates Iron Monument at the subject corner.

- Jan. 2008 C.J. Hendershott, LS 45353, notes on file in the Northern Engineering & Consulting, (formerly Landecker & Assoc.) Walker Office, found a 2 inch iron pipe at the 1919 position.

- Dec. 2014 B. Hippen, technician, records of the CCHD/SO, found a 2 inch outside diameter iron pipe, up 3.0 feet, in Tamarack swamp and witnessed as follows:
 5" Tamarack S 80° W 17.40 feet 4" Tamarack S 21° E 16.18 feet
 5" Tamarack N 18° E 17.30 feet

The recovered and established references for the position are shown on the face of this document.

Analysis of the recovered record data, field evidence and survey measurements, indicates that the monument recovered by the CCHD/SO in 2014 is the correct perpetuation of this corner.

County Coordinates (Cass County North)

Northing 119007.74
Easting 484426.64