



A000608139

OFFICE OF THE COUNTY RECORDER
CASS COUNTY, MINNESOTA
CERTIFIED, FILED, AND/OR
RECORDED ON

12/12/2014 10:06:12 AM

AS DOC #: A000608139

PAGES: 2

REC FEES: 0.00

KATHRYN M. NORBY
CASS COUNTY RECORDER

BY SR _____ Dep

Twp 135 Rge 30 Index No. N.0-7.0

CERTIFICATE OF LOCATION OF GOVERNMENT CORNER

North Quarter corner of Section 20, Township 135 N., Range 30 W., 5th P.M.
State of Minnesota, County of Cass

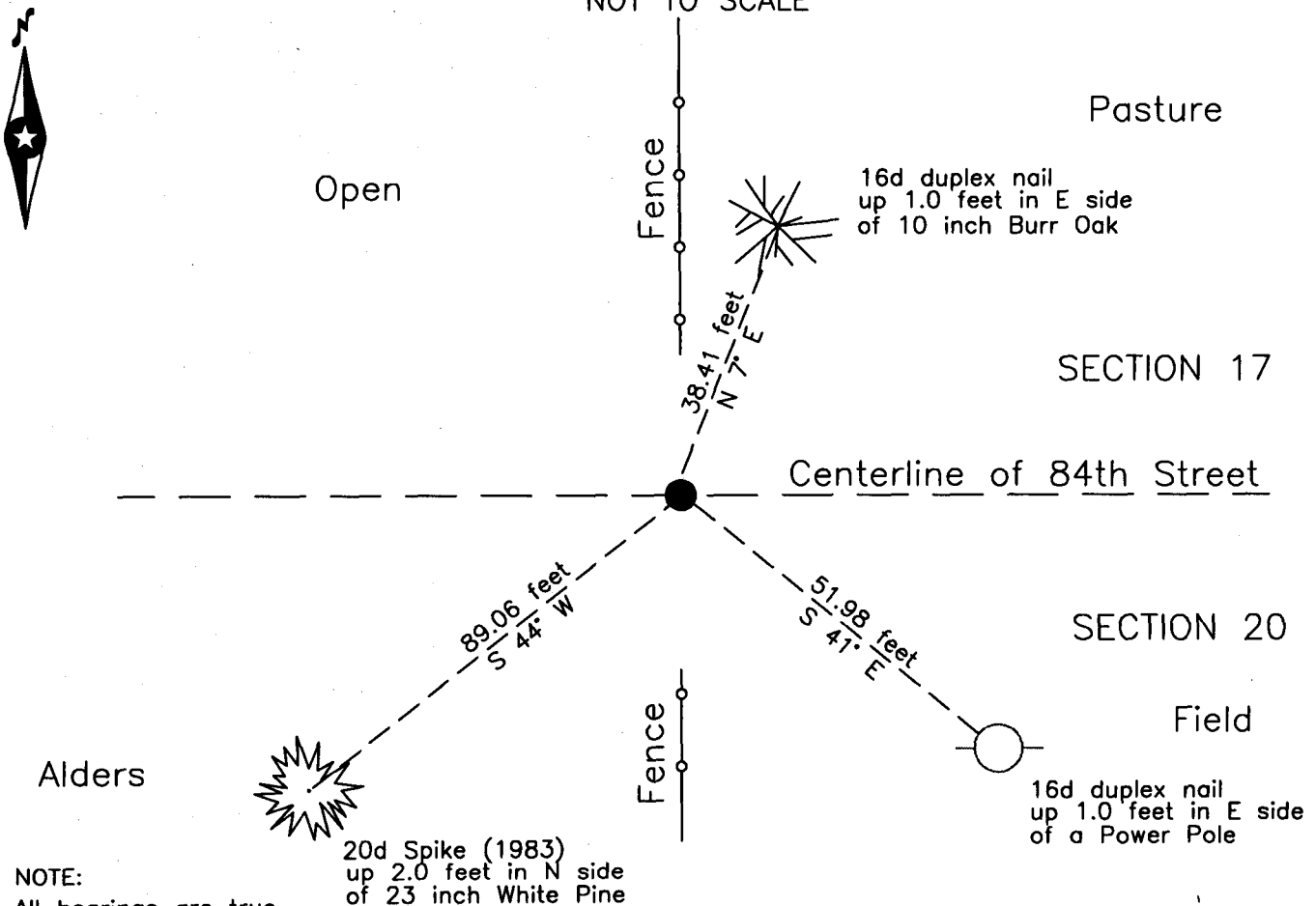
At the corner location shown on the sketch:

On 18 Feb 2009 found a 2 inch outside diameter iron pipe, down 0.1 foot,
on centerline of 84th Street and fence lines North and South.

left monument as found lowered monument removed monument (explain)

On _____ placed _____

SKETCH OF REFERENCE TIES
NOT TO SCALE




NOTE:
All bearings are true

20d Spike (1983)
up 2.0 feet in N side
of 23 inch White Pine

Statement of evidence relative to this corner location is on the back of this page.

I hereby certify that this survey, plan or report was prepared by me or under my direct supervision and that I am a duly Licensed Land Surveyor under the laws of the State of Minnesota.


Terry L. Freeman, Cass County Surveyor
Date 12/10/14 MN License No. 21367



Statement of Evidence**North Quarter corner of Section 20, Township 135 North, Range 30 West, 5th Principal Meridian.**

- Oct. 1869 T.B. Walker, General Land Office (GLO) Deputy Surveyor, in the notes of the subdivision of Township 135 North, Range 30 West, set a post for the original corner and referenced it as follows:
 10" Oak S 45° E 7 links (4.62 feet) 11" Oak N 80° W 30 links (19.80 feet)
 The above record is on file with the Minnesota Historical Society in St. Paul, Minnesota, copies are filed with the Cass County Highway Department, Surveyor's Office (CCHD/SO).
- Oct. 1903 W.H. Hallett, Surveyor's Report, Township Road Order on file at the Cass County Highway Department, (CCHD) indicates a road on the North line of Sections 19 and 20.
- 1904 W.H. Hallett, Curo Book 172A, page 33, on file in the CCHD/SO, Mackey states " original ¼ cor. which is a stone 24" Long set in place of true cor. 16 yrs ago by Surveyor Hallett."
- May 1920 L. Mackey, Engineer, Survey Book C, Record No. 442, page 373 and Curo Book 172A, page 33, on file in the CCHD/SO, states "I accept this cor. and set I.M. 2" x 47" - 46" in ground."
- Jan. 1983 T. Freeman, CCHD/SO Technician and Marcum, Cass County Land Department Forester, Cass County Land Corner Record, on file in the CCHD/SO, indicates they found a 2" I.P. in center of road, Fences north and south and lists the following:
 24" W. Pine S 44° W 89.06 feet
- Feb 2009 B. Hippen technician, records of the CCHD/SO, found a 2 inch outside diameter iron pipe, down 0.1 foot, in centerline of 84th street and on fence lines north and south and witnessed the same as follows:
 23" W. Pine (1983) S 44° W 89.06 feet 10" B. Oak N 7° E 38.41 feet
 P. Pole S 41° E 51.98 feet
- Dec. 2014 B. Hippen, CCSO technician, records of the CCHD/SO, found the monument and witnesses from 2009. The monument, recovered and established references for the position are shown on the face of this document.

Analysis of the recovered record data, field evidence and survey measurements, indicates that the monument recovered by CCHD/SO is the accepted location of this corner.

County Coordinates (Cass County South)

Northing 225324.91

Easting 494994.95