



A000607791

OFFICE OF THE COUNTY RECORDER
CASS COUNTY, MINNESOTA
CERTIFIED, FILED, AND/OR
RECORDED ON

12/1/2014 11:44:17 AM

AS DOC #: A000607791

PAGES: 2

REC FEES: 0.00

KATHRYN M. NORBY
CASS COUNTY RECORDER
BY SR _____ Dep

Twp 142 Rge 25 Index No. V.0-13.0

CERTIFICATE OF LOCATION OF GOVERNMENT CORNER

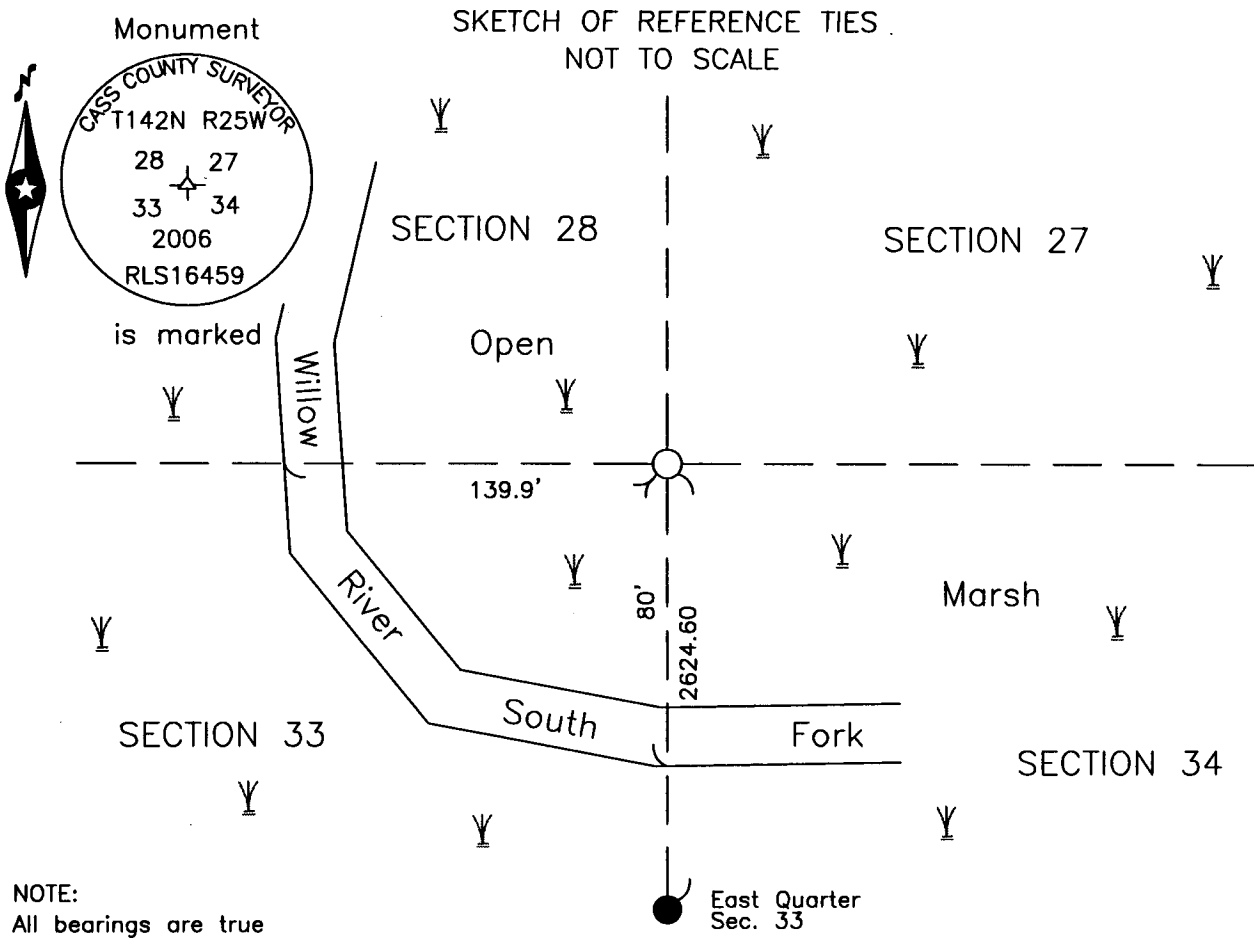
Northeast of Section 33, Township 142 N., Range 25 W., 5th P.M.
State of Minnesota, County of Cass

At the corner location shown on the sketch:

On _____ found _____

left monument as found lowered monument removed monument (explain)

On 29 Nov 2006 placed a 1 x 30 inch Aluminum capped tube, up 0.8 foot,
in open marsh.



Statement of evidence relative to this corner location is on the back of this page.

I hereby certify that this survey, plan or report was prepared by me or under my direct supervision and that I am a duly Licensed Land Surveyor under the laws of the State of Minnesota.

Terry L. Freeman, Cass County Surveyor
Date 11/26/14 MN License No. 21367

Statement of Evidence**Northeast corner of Section 33, Township 142 North, Range 25 West, 5th Principal Meridian.**

- April 1871 W.P.Allen and E.P.Putnam, General Land Office (GLO) Deputy Surveyors, in the notes of the subdivision of Township 142 North, Range 25 West, set a post for the original corner and referenced it as follows:
10" Tam S 58° E 34 links (22.44 feet) 12" Tam N 45° W 53 links (34.98 feet)
10" Tam N 18° W 67 links (44.22 feet)
The above record is on file with the Minnesota Historical Society in St. Paul, Minnesota, copies are filed with the Cass County Highway Department, Surveyor's Office (CCHD/SO).
- Aug 1922 J.H. Flynn, Cass County Surveyor, Survey Record 509, Book D, page 69 and Curo Book 152, page 41, on file in the CCHD/SO, notes list the GLO witnesses and states "now is stumps of the east Two. Set wood post thereby" this portion of the notes for County Road A, have been omitted from the Survey Record, however the pictorial shows the East ¼ corner is midway between the Northeast and Southeast corners of Section 33.
- Nov 2006 B. Hippen, technician and E. Lindquist, Cass County Land Department resource manager, records of the CCHD/SO, searched this position and found no evidence of corner. An aluminum county monument was placed at the record distance north of the recovered East ¼ corner of Section 33 and the GLO distance East of the river. There are no trees in this area.

The recovered and established references for the position are shown on the face of this document.

Analysis of the recovered record data, field evidence and survey measurements, indicates that the monument set in 2006 by CCHD/SO is the accepted location of this corner.

County Coordinates (Cass County North)**Northing 200283.88****Easting 594318.87**