



A000605477

OFFICE OF THE COUNTY RECORDER
CASS COUNTY, MINNESOTA
CERTIFIED, FILED, AND/OR
RECORDED ON

9/11/2014 11:29:30 AM

AS DOC #: A000605477

PAGES: 2

REC FEES: 0.00

KATHRYN M. NORBY
CASS COUNTY RECORDER

BY SR _____ Dep

Twp 139 Rge 28 Index No. J.0-09.0

CERTIFICATE OF LOCATION OF GOVERNMENT CORNER

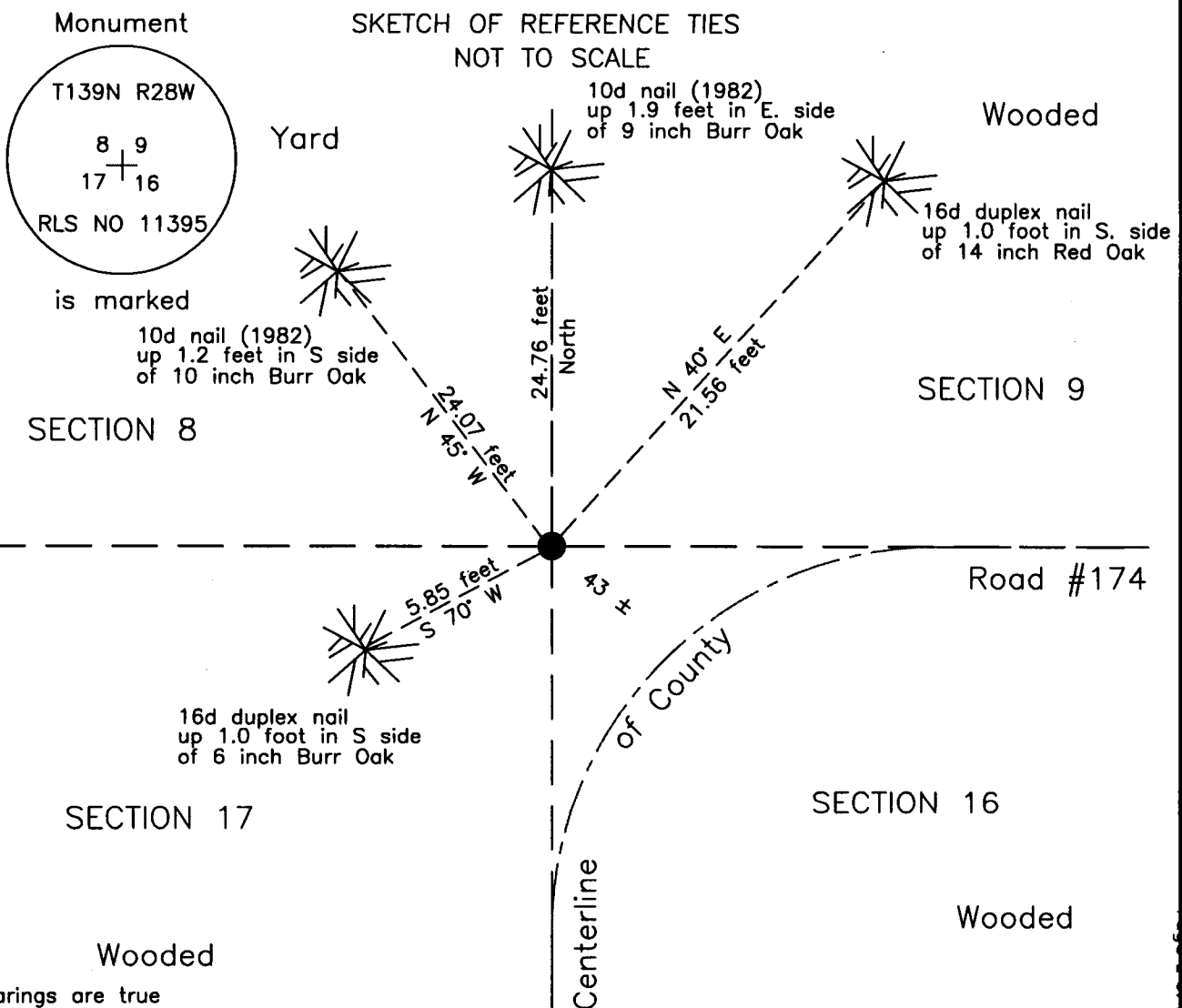
Northeast corner of Section 17, Township 139 N., Range 28 W., 5th P.M.
State of Minnesota, County of Cass

At the corner location shown on the sketch:

On 3 Mar 2003 found a 2 inch square steel tube with aluminum cap, up 0.6 foot
near the centerline PI of County Road #174.

left monument as found lowered monument removed monument (explain)

On _____ placed _____



Statement of evidence relative to this corner location is on the back of this page.

I hereby certify that this survey, plan or report was prepared by me or under my direct supervision and that I am a duly Licensed Land Surveyor under the laws of the State of Minnesota.

Terry L. Freeman, Cass County Surveyor
Date 9/10/14 MN License No. 21367





Index No. J.0-09.0

Statement of Evidence

Northeast corner of Section 17, Township 139 North, Range 28 West, 5th Principal Meridian.

April 1864 Johnson and Thornton, General Land Office Deputy Surveyors, notes for the subdivision of Township 139 North, Range 28 West, set a post for the original corner and referenced it as follows:
7" W. Birch N 25° E 29 links (19.14 feet) 7" W. Birch N 45° W 22 links (14.52 feet)
7" W. Birch S 45° E 27 links (17.82 feet) 8" Aspen S 60° W 33 links (21.78 feet)
The above record is on file with the Minnesota Historical Society in St. Paul, Minnesota, copies are filed with the Cass County Highway Department, Surveyor's Office (CCHD/SO).

Oct. 1908 J.W. Curo, LS 1428, Curo Book 85, page 219, on file in the CCHD/SO, states "on west side of 16-139-28 and run 2640 ft N. set temp NW Cor of 16". He lists the GLO witnesses and states "We did not find them."

March 1909 Wabedo Township Final Road Order, states a road running to corners of sections 9 & 10 and 16 & 15 thence west one mile between 9 & 16 to corner.

June 1911 J.W. Curo, LS 1428, Cass County Surveyor, Survey Record No. 165, Book A, page 366 and Curo Book 73, page 40 and 41, on file in the CCHD/SO, states "We then go back to the cor 8-9-16-17 and set it from the cross lines." On page 41 states "set a 8x8x36 cement post there for corner".

Aug. 1914 B.F. Clark, LS 231, Wabedo Township Final Road Order, indicates a road beginning at the subject corner and running on the section line south.

Sept. 1919 B.F. Clark, LS 231, CCHD/SO, Survey Record, Book C, Record No. 434, page 313, on file in the CCHD/SO, states "at 5385.2 ft. the cor. to Sec. 16-17-8-9. Concrete post."

Dec. 1921 B.F. Clark, LS 231, CCHD/SO, County Resurvey Plat, on file in the Cass County Recorders Office, as Document Number 69798 and 69797, indicates Iron Monument.

1938 Civilian Conservation Corps, personnel, Washburn Lake Book 13, page 20, on file in the Minnesota Department of Natural Resources, Outing Office, state at 5278' from east – Fnd Concrete mon.

1982 Cass County Land Corner Record, on file in the CCHD/SO, states Co. Surveyor found concrete post at P.I. of road S and E, up 2.0' and lists the following witnesses:
10" W. Oak N 45° W 24.14 feet 10" W. Oak North 24.82 feet

March 2003 B. Hippen and T. Anderson, technicians, records of the CCHD/SO, found a 2 inch square steel post with aluminum cap, up 0.6 foot, near the centerline P.I. of County Road Number 174 and witnesses as follows:
10" W. Oak N 45° W 24.07 feet(1982) 9" W. Oak North 24.76 feet(1982)
14" R. Oak N 40° E 21.56 feet 6" W. Oak S 70° W 5.85 feet

July 2014 B. Hippen, technician, records of the CCHD/SO, found a 2 inch square steel post with aluminum cap, up 0.6 foot, near the centerline P.I. of County Road Number 174 and 2003 witnesses in good condition.

The monument, recovered and established references for the position are shown on the face of this document.

Analysis of the recovered record data, field evidence and survey measurements, indicates that the monument found by CCHD/SO in 2003 is the accepted location of this corner.

County Coordinates (Cass County North)

Northing 121565.96
Easting 494821.35