



A000605471

OFFICE OF THE COUNTY RECORDER
CASS COUNTY, MINNESOTA
CERTIFIED, FILED, AND/OR
RECORDED ON

9/11/2014 11:29:24 AM

AS DOC #: A000605471

PAGES: 2

REC FEES: 0.00

KATHRYN M. NORBY
CASS COUNTY RECORDER

BY SR _____ Dep

CERTIFICATE OF LOCATION OF GOVERNMENT CORNER

I hereby certify that this survey, plan, or report was prepared by me or under my direct supervision and that I am a duly Licensed Land Surveyor under the laws of the State of Minnesota.


TERRY L. FREEMAN

Date: 9/10/14 License No: 21367
21367

OFFICE OF THE COUNTY RECORDER
County of CASS

I hereby certify that this document was filed in the Office of the County Recorder at _____ o'clock _____ .M. on the _____ day of _____, 20____ A.D.

County Recorder _____

By: _____, Deputy
DOCUMENT NO. _____

_____ NORTHEAST _____ Corner of Section 24, Township 139, Range 29, 5TH P.M.

On _____ found a _____

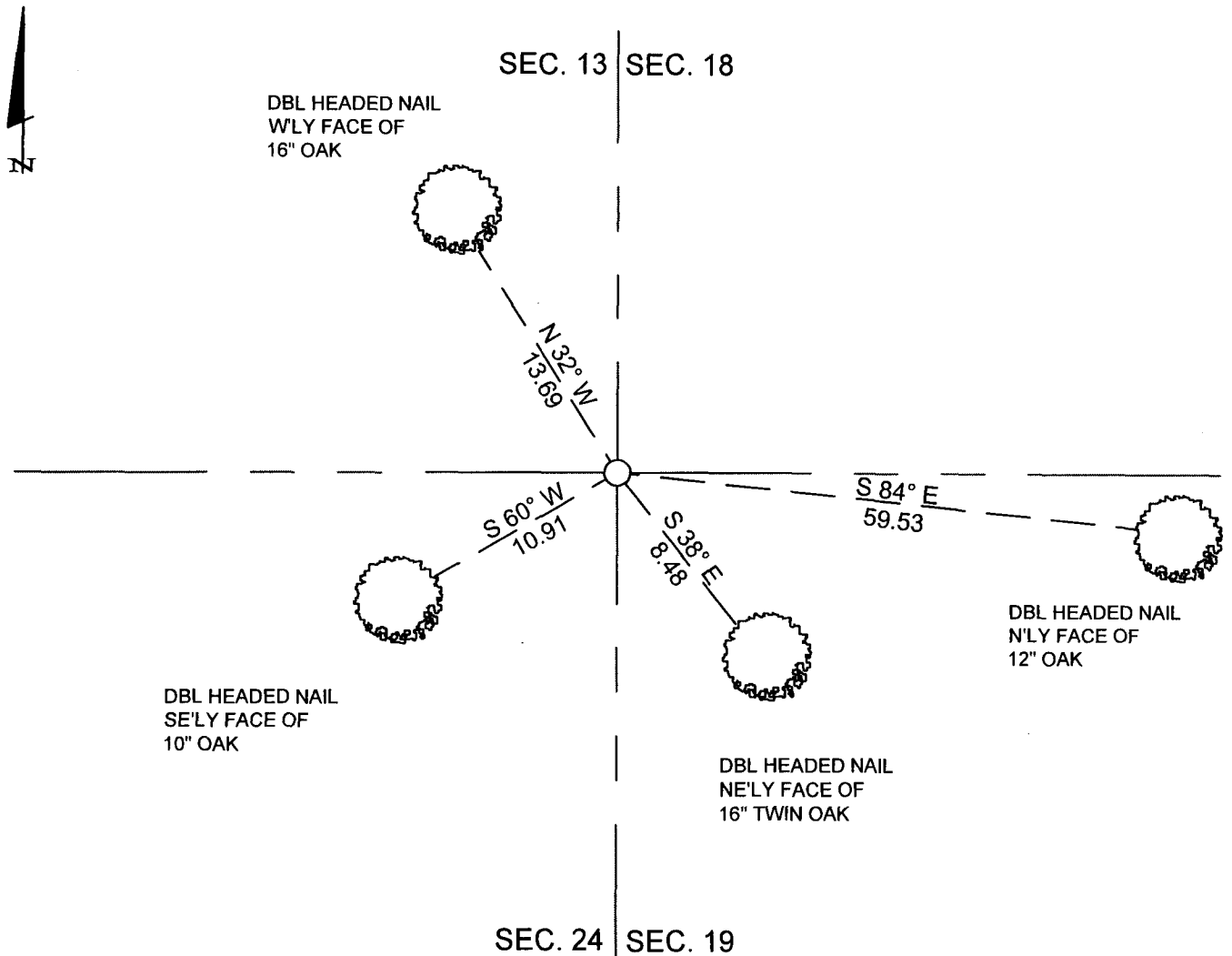
left monument as found, lowered monument, removed monument (explain)

On 01-04-08 placed a 1/2 inch iron pipe w/cap stamp 45353

SKETCH OF REFERENCE TIES

Corner Index: **N.0-25.0**

Not to Scale



Statement of evidence for this corner position is on the back of this page



Page 1 of 2

A000605471

Statement of Evidence**Northeast corner Section 24, Township 139 North, Range 29 West, 5th Principal Meridian.**

- Aug. 1865 Geo. Wright, General Land Office (GLO) Deputy Surveyor, notes for the subdivision of Township 139 North, Range 29 West, set a post for the original corner and referenced it as follows:
 8" W. Birch N 14° E 14 links (9.24 feet) 9" Spruce S 56° E 29 links (19.14 feet)
 8" Soft Maple S 30° W 28 links (18.48 feet) 20" W. Pine N 53° W 32 links (21.12 feet)
 The above record is on file with the Minnesota Historical Society in St. Paul, Minnesota, copies are filed with the Cass County Highway Department, Surveyor's Office (CCHD/SO).
- Oct. 1919 B.F. Clark, LS 231, Deputy County Surveyor, Survey Record No. 434, Book C, page 326-327, on file in the CCHD/SO, states they ran west "At 2395.2 ft. enter N. & S. line. Found a post 2 ft. long 4 in square. Search for witness but couldn't find any." Later ran north "At 2636.3 ft. a Popple post 3 ft. long 4 in. sq. Then search for witness found a Spruce marked B.T. down but not being sure I measure North." After finding the west ¼ corner of Section 18, 55.4 feet East of line, returns and "Set west 11.4 ft. an iron pipe 2 1/2 ft. with wooden point in side it. Drove the same in the ground 3 ft. and made 4 witness trees":
 5" Tamarack N 55° W 38 feet 5" J. Pine S 10° W 57 feet
 8" J. Pine S 25° E 812 feet 4" N. Pine N 22° E 418 feet
- March 1922 B.F. Clark, LS 231, County Resurvey Plat, on file in the Cass County Recorders Office, as Document Number 69797, indicates Iron Monument at the subject corner.
- 1938 Civilian Conservation Corps personnel records, Washburn Lake Book 12, page 24 on file in the Minnesota Department of Natural Resources, Outing office, state at 4484' from west End 2" I.P.
- Aug. 1975 L. Mengis, technician, Cass County Highway Department(CCHD) S.A.P. 11-649-01, on file in the CCHD, notes indicate a Cedar post on the extension of the old road grade.
- Jan. 2008 C.J. Hendershott, LS 45353, notes on file in the Northern Engineering & Consulting, (formerly Landecker & Assoc.) Walker Office, set a 1/2 inch iron pipe with cap marked 45353 at a single proportion position between the recovered East ¼ corner of Section 13 and the recovered Southeast corner of Section 24 using the distances shown on the 1922 County Resurvey Plat by Ben F. Clark and witnessed as follows:
 16" Oak N 32° W 13.69 feet 12" Oak S 84° E 59.53 feet
 16" Twin Oak S 38° E 8.48 feet 10" Oak S 60° W 10.91 feet
- Aug. 2014 B. Hippen, technician, records of the CCHD/SO, found a 7/8 inch outside diameter iron pipe with cap marked RLS 45353, up 0.2 foot, the 2008 witnesses in good condition.

The recovered and established references for the position are shown on the face of this document.

Analysis of the recovered record data, field evidence and survey measurements, indicates that the monument recovered by the CCHD/SO in 2014 is the accepted location of this corner.

County Coordinates (Cass County North)

Northing 116361.43

Easting 484404.25