



A000605470

OFFICE OF THE COUNTY RECORDER  
CASS COUNTY, MINNESOTA  
CERTIFIED, FILED, AND/OR  
RECORDED ON

9/11/2014 11:29:23 AM

AS DOC #: A000605470

PAGES: 2

REC FEES: 0.00

KATHRYN M. NORBY  
CASS COUNTY RECORDER

BY SR \_\_\_\_\_ Dep

# CERTIFICATE OF LOCATION OF GOVERNMENT CORNER

I hereby certify that this survey, plan, or report was prepared by me or under my direct supervision and that I am a duly Licensed Land Surveyor under the laws of the State of Minnesota.

TERRY L. FREEMAN

Date: 9/10/14 License No: 21367  
21367

OFFICE OF THE COUNTY RECORDER  
County of CASS

I hereby certify that this document was filed in the Office of the County Recorder at \_\_\_\_\_ o'clock \_\_\_\_\_ M. on the \_\_\_\_\_ day of \_\_\_\_\_, 20\_\_\_\_ A.D.

County Recorder \_\_\_\_\_

By: \_\_\_\_\_, Deputy  
DOCUMENT NO.

NORTH QUARTER Corner of Section 24, Township 139, Range 29, 5TH P.M.

On \_\_\_\_\_ found a \_\_\_\_\_

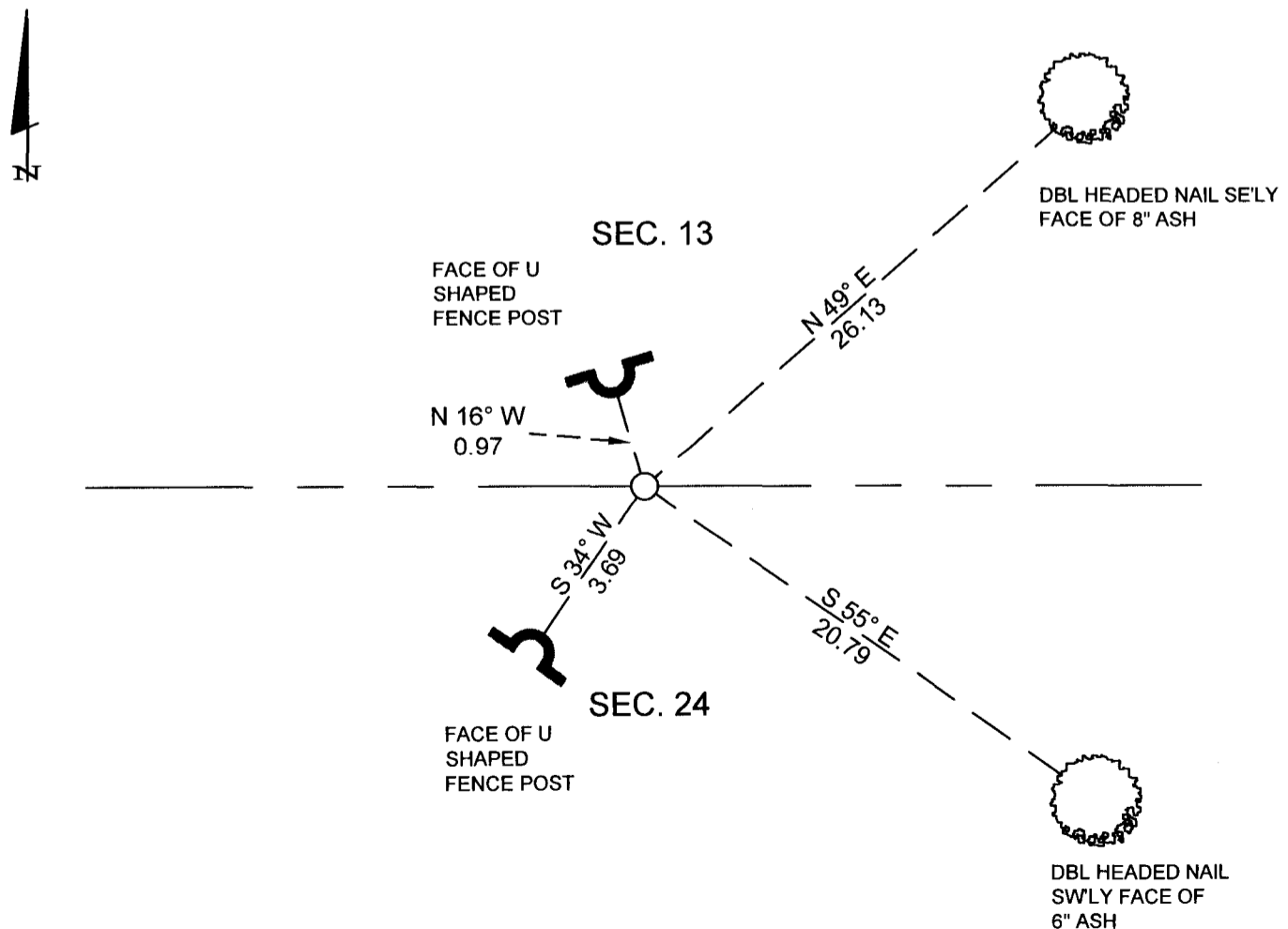
left monument as found,  lowered monument,  removed monument (explain)

On 01-04-08 placed a Place 1/2 inch iron pipe w/ cap stamp "45353"

## SKETCH OF REFERENCE TIES

Corner Index: **N - 23**

Not to Scale



Statement of evidence for this corner position is on the back of this page



Statement of Evidence**North Quarter corner Section 24, Township 139 North, Range 29 West, 5th Principal Meridian.**

Aug. 1865 Geo. Wright, General Land Office (GLO) Deputy Surveyor, notes for the subdivision of Township 139 North, Range 29 West, set a post for the original corner and referenced it as follows:  
9" W. Birch S 32° W 17 links (11.22 feet) 14" Tamarack N 52° E 23 links (15.18 feet)  
The above record is on file with the Minnesota Historical Society in St. Paul, Minnesota, copies are filed with the Cass County Highway Department, Surveyor's Office (CCHD/SO).

Jan. 2008 C.J. Hendershott, LS 45353, notes on file in the Northern Engineering & Consulting, (formerly Landecker & Assoc.) Walker Office, set a 1/2 inch iron pipe with cap marked 45353 at the lost position between the Northwest and Northeast corners of Section 24 and witnessed as follows:  
U fence post N 16° W 0.97 feet 8" Ash N 49° E 26.13 feet  
U fence post S 34° W 3.69 feet 6" Ash S 55° E 20.79 feet

The recovered and established references for the position are shown on the face of this document.

**Analysis of the recovered record data, field evidence and survey measurements, indicates that the monument set in 2008 is the accepted location of this corner.**

**County Coordinates (Cass County North)****Northing 116397.25****Easting 481777.77**