



A000605469

OFFICE OF THE COUNTY RECORDER
CASS COUNTY, MINNESOTA
CERTIFIED, FILED, AND/OR
RECORDED ON

9/11/2014 11:29:22 AM

AS DOC #: A000605469

PAGES: 2

REC FEES: 0.00

KATHRYN M. NORBY
CASS COUNTY RECORDER

BY SR _____ Dep

CERTIFICATE OF LOCATION OF GOVERNMENT CORNER

I hereby certify that this survey, plan, or report was prepared by me or under my direct supervision and that I am a duly Licensed Land Surveyor under the laws of the State of Minnesota.

TERRY L. FREEMAN

Date: 9/10/14 License No: 21367
21367

OFFICE OF THE COUNTY RECORDER
County of CASS

I hereby certify that this document was filed in the Office of the County Recorder at _____ o'clock _____ .M. on the _____ day of _____, 20____ A.D.

County Recorder _____

By: _____, Deputy
DOCUMENT NO. _____

_____ NORTHEAST _____ Corner of Section 23, Township 139, Range 29, 5TH P.M.

On 11-29-07 found a 2 inch iron pipe w/2 1/4 inch flange on the top 2 inches
of the pipe, and up 7 inches from the ground

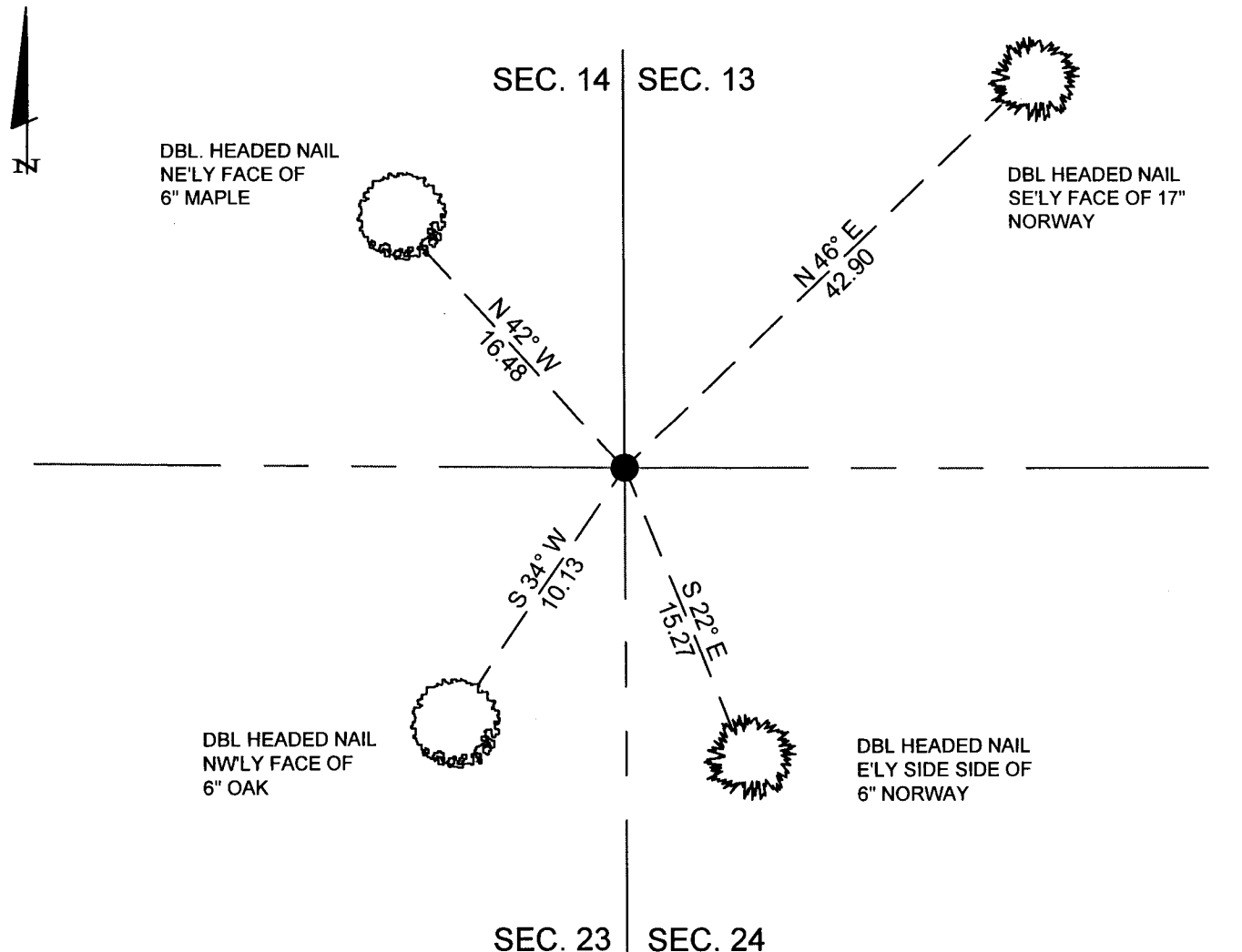
left monument as found, lowered monument, removed monument (explain)

On _____ placed a _____

SKETCH OF REFERENCE TIES

Corner Index: **N.0-21.0**

Not to Scale



Statement of evidence for this corner position is on the back of this page





Statement of Evidence

Northeast corner Section 23, Township 139 North, Range 29 West, 5th Principal Meridian.

- Aug. 1865 Geo. Wright, General Land Office (GLO) Deputy Surveyor, notes for the subdivision of Township 139 North, Range 29 West, set a post for the original corner and referenced it as follows:

30" N. Pine	N 57° E	15 links (9.90 feet)	14" W. Pine	N 49° W	65 links (42.90 feet)
6" W. Birch	S 49 1/2° W	60 links (39.60 feet)	14" N. Pine	S 77° E	71 links (46.86 feet)

The above record is on file with the Minnesota Historical Society in St. Paul, Minnesota, copies are filed with the Cass County Highway Department, Surveyor's Office (CCHD/SO).
- Dec. 1928 J.W. Curo, LS 1428, Curo Book 156, page 49, 61, 68, 69, 71 and 85, on file in the CCHD/SO, working for Postlewaite, states "try to locate cor. to 13-14-23-24-139-29. No find. Curbey Siltman and Oscar Sales do not seem to know where it is." Page 61 shows random measurements. Page 68 indicates I.M. NE of random line. Page 69 indicates corner is 56.95 East at 5388.29 South. Page 71 indicates I.M. in section pictorial. Page 85 states "S.E. 14-139-29= I.M."
- March 1929 J.W. Curo, LS 1428, Curo Book 143, page 18, on file in the CCHD/SO, states "hub on Ridge IM Sec Cor 13-14-23-24-139-29 bears S 22° W 104.80."
- Aug. 1975 L. Mengis, technician, Cass County Highway Department(CCHD) S.A.P. 11-649-01, on file in the CCHD, notes indicate a 2 inch I.P.429.4 feet north of Station 132+38.
- Nov. 2007 C.J. Hendershott, LS 45353, notes on file in the Northern Engineering & Consulting, (formerly Landecker & Assoc.) Walker Office, found a 2 inch iron pipe with a 2.25 inch flange on the top 2 inches, up 7 inches and witnessed as follows:

6" Maple	N 42° W	16.48 feet	17" N. Pine	N 46° E	42.90 feet
6" N. Pine	S 22° E	15.27 feet	6" Oak	S 34° W	10.13 feet
- Aug. 2014 B. Hippen, technician, records of the CCHD/SO, found a 2 inch outside diameter iron pipe with flange on top, up 0.7 foot, 60 feet, more or less, northeast of yard and the 2007 witnesses in good condition.

The recovered and established references for the position are shown on the face of this document.

Analysis of the recovered record data, field evidence and survey measurements, indicates that the monument recovered by the CCHD/SO in 2014 is the accepted location of this corner.

County Coordinates (Cass County North)
Northing 116433.34
Easting 479151.15