



A000605425

OFFICE OF THE COUNTY RECORDER
CASS COUNTY, MINNESOTA
CERTIFIED, FILED, AND/OR
RECORDED ON

9/10/2014 11:18:24 AM

AS DOC #: A000605425

PAGES: 2

REC FEES: 0.00

KATHRYN M. NORBY
CASS COUNTY RECORDER

BY SR Dep

Page 1 of 2
A000605425

CERTIFICATE OF LOCATION OF GOVERNMENT CORNER

I hereby certify that this survey, plan, or report was prepared by me or under my direct supervision and that I am a duly Licensed Land Surveyor under the laws of the State of Minnesota.

Cynthia M. Hidde
CYNTHIA M. HIDDE

Date: 9/2/14 License No: 44881
44881

OFFICE OF THE COUNTY RECORDER
County of Cass

I hereby certify that this document was filed in the Office of the County Recorder at _____ o'clock _____ .M. on the _____ day of _____, 20____ A.D.

County Recorder _____

By: _____, Deputy
DOCUMENT NO.

Northeast Corner of Section 23, Township 136, Range 32, 5th P.M.

On _____ found a _____

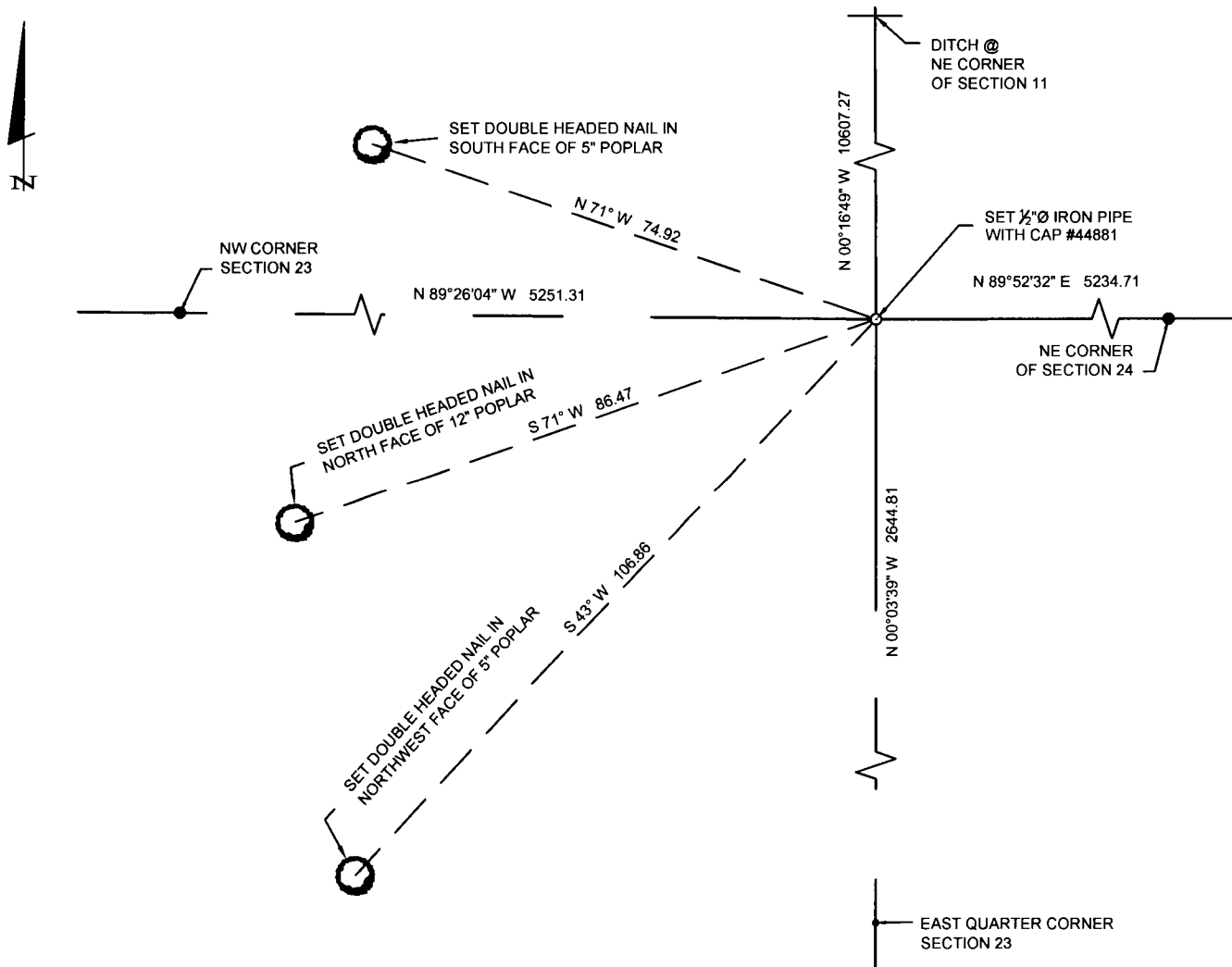
left monument as found, lowered monument, removed monument (explain)

On 3-22-12 placed a 1/2"Ø Iron Pipe

SKETCH OF REFERENCE TIES

Corner Index: **N.0-21.0**

Not to Scale



Statement of evidence for this corner position is on the back of this page



Index No. N.0-21.0

Statement of Evidence

Northeast Quarter Corner of Section 23, Township 136 North, Range 32 West
of the 5th P.M., Cass County, Minnesota

- 1866 Oscar E. Garrison, General Land Office Deputy Survey notes in subdivision of T136N, R32W, set a wood post for corner and marked the following bearing trees: 6" Aspen N 1/2° E 206 lks., 8" Aspen N 1/2° W 204 lks.
Information on file in the Mn Historical Society in St. Paul and copies in Cass County Highway Dept/ Surveyors Office (CCHD/50)
- 2012 On March 22, 2012 Cynthia M. Hidde, PLS #44881 did not find evidence of the corner. Corner was considered lost and its position was calculated by method of double proportion. Set a 1/2"Ø Iron Pipe with cap #44881 and established references for the position as shown on the face of this document.