

CERTIFICATE OF LOCATION OF GOVERNMENT CORNER

NE Corner of Section 36, Township 138N, Range 32W, 5th p.m., State of Minnesota, County of Cass

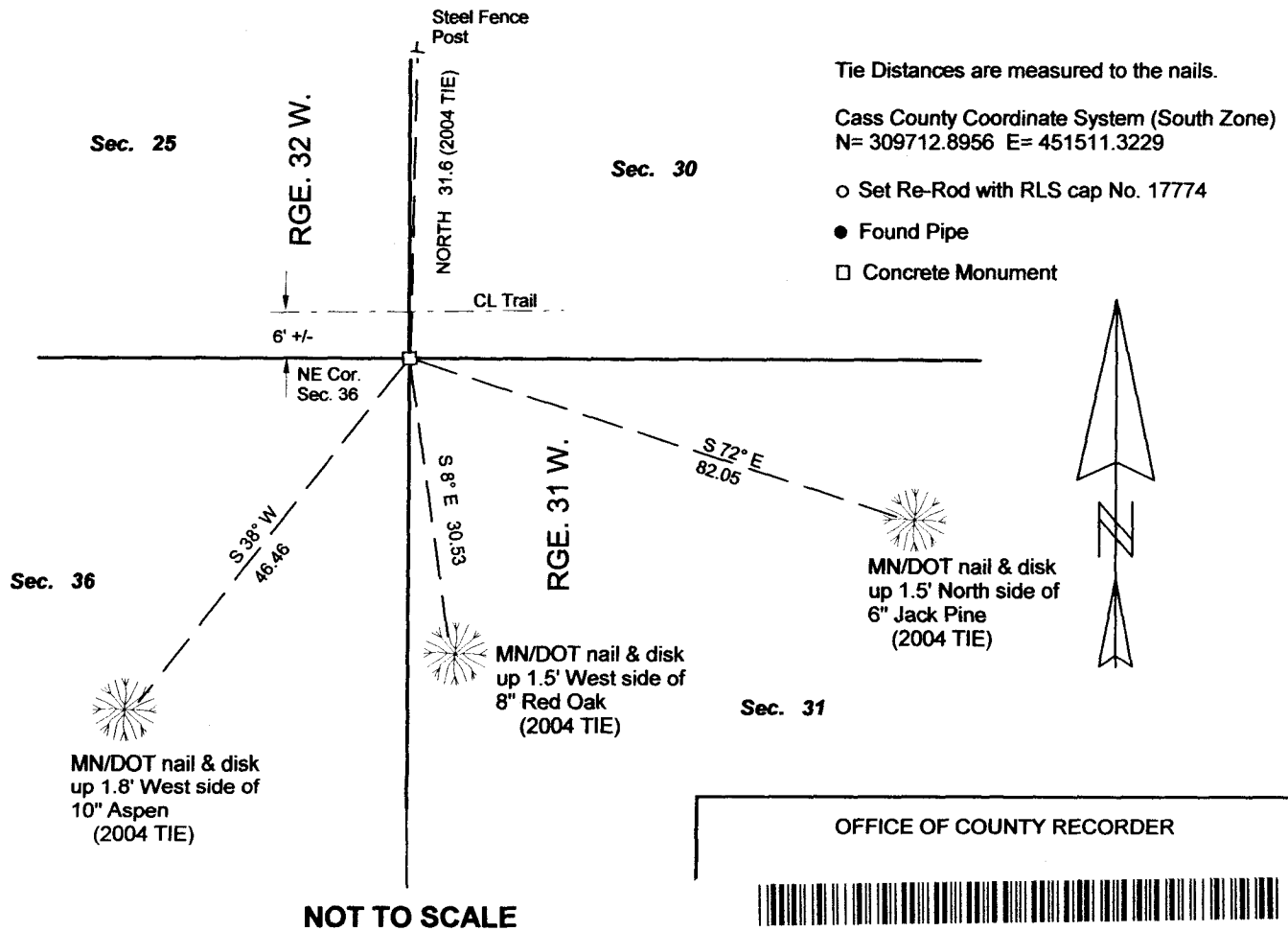
At the corner location shown on the sketch:

On 11/08/2012 found a CONCRETE MONUMENT WITH A RR SPIKE AGAINST THE NORTH SIDE
Date

left monument as found lowered monument removed monument (explain)

On _____ placed a _____
Date

SKETCH OF REFERENCE TIES



Statement of evidence relative to this corner location is on back of page.

I hereby certify that this document and the data contained herein was prepared by me or under my direct supervision.

Marvin R. Kohout 14 Aug 2014
Marvin R. Kohout Date

License No. 17774

Land surveyor

OFFICE OF COUNTY RECORDER



A000604899

**OFFICE OF THE COUNTY RECORDER
CASS COUNTY, MINNESOTA
CERTIFIED, FILED, AND/OR
RECORDED ON**

8/20/2014 11:22:44 AM

AS DOC #: A000604899

PAGES: 2

REC FEES: 0.00

**KATHRYN M. NORBY
CASS COUNTY RECORDER**

BY SR Dep

Page 1 of 2 A000604899



INDEX NO. V.0 - 25.0

STATEMENT OF EVIDENCE

NORTHEAST CORNER SECTION 36, TOWNSHIP 138N, RANGE 32W, 5TH P.M.

AUG. J.W. MYERS, GENERAL LAND OFFICE (GLO) DEPUTY SURVEYOR SET A POST
1860 FOR THE ORIGINAL CORNER IN HIS SURVEY OF THIS TOWNSHIP LINE
8" PINE 10" PINE 6" PINE
N85E N81W S63W
16 LKS (10.56') 43 LKS (28.38') 25 LKS (16.50')

FEB. J.W. CURO, LS NO. 1428, CASS COUNTY SURVEYOR, SURVEY RECORD NO. 158,
1909 BOOK "A" PAGE 337 ON FILE IN CCSO STATES "WE FIND THE STUMP OF THE
NORTHEAST TREE PLAINLY MARKED AND ALL THE OTHERS DIMLY MARKED
FROM WHICH WE SET A STAKE FOR THE TRUE CORNER."

1912 J.W. CURO, LS NO. 1428, LAND CORNER RECORD INDICATES A 8" X 8" X 36"
CONCRETE POST WAS SET. SURVEY RECORD #181 BOOK "A" PG 417

JUNE E.B. HORST, LS NO. 376, DEPUTY COUNTY SURVEYOR, RECORD NO. 385, BOOK
1917 "C" PAGE 62 IN CCSO STATES AT STATION 21119.2 SOUTH AN 8" X 8" CEMENT
MONUMENT, MARKING THE CORNER OF SECTIONS 30-31, 138-31 AND SECTIONS
25-36, 138-32, ESTABLISHED BY JOHN CURO FROM U.S. BEARING TREES (BEARING
TREES STILL STANDING) CURO BOOK 76 PAGE 37

CIRCA MNDOT SECTION SUBDIVISION FOR GLOBAL POSITIONING TOWER FOUND
2001 CORNER. MNDOT HAS NO RECORD OF THIS INFORMATION

DEC. B. HIPPEN, TECHNICIAN, RECORDS OF THE CCSO, FOUND AN 8" X 8" X 12" PIECE
2003 CONCRETE LYING ON THE GROUND ON THE SOUTH SIDE OF A TRAIL AND MNDOT
NAIL AND DISC IN WITNESS TIES

JUNE B. HIPPEN, TECHNICIAN, RECORDS OF THE CCSO, FOUND 8" X 8" CONCRETE
2004 MONUMENT, TOP 12" BROKEN OFF, DOWN 0.5' SET THE TOP BACK IN PLACE
AND SET RR SPIKE ON NORTH SIDE. MONUMENT IS 6' +/- SOUTH OF TRAIL. MNDOT
WITNESSES ARE:

6" J. PINE	10" ASPEN	8" RED OAK	STEEL POST
S72E	S38W	S8E	NORTH
82.05'	46.46'	30.53'	31.6'

2012 MARVIN KOHOUT, LS NO. 17774, AND DOUG STILLE, TECHNICIAN, OF KOHOUT
LAND SURVEYING, FOUND THE CONCRETE MONUMENT WITH A RR SPIKE ON THE
NORTH SIDE. MNDOT WITNESSES ARE GOOD.