



A000604001

OFFICE OF THE COUNTY RECORDER  
CASS COUNTY, MINNESOTA  
CERTIFIED, FILED, AND/OR  
RECORDED ON

7/17/2014 10:59:54 AM

AS DOC #: A000604001

PAGES: 2

REC FEES: 0.00

KATHRYN M. NORBY  
CASS COUNTY RECORDER

BY SR Dep

Page 1 of 2 A000604001

Twp 137 Rge 31 Index No. V.0-17.0

### CERTIFICATE OF LOCATION OF GOVERNMENT CORNER

Northeast corner of Section 34, Township 137 N., Range 31 W., 5th P.M.  
State of Minnesota, County of Cass

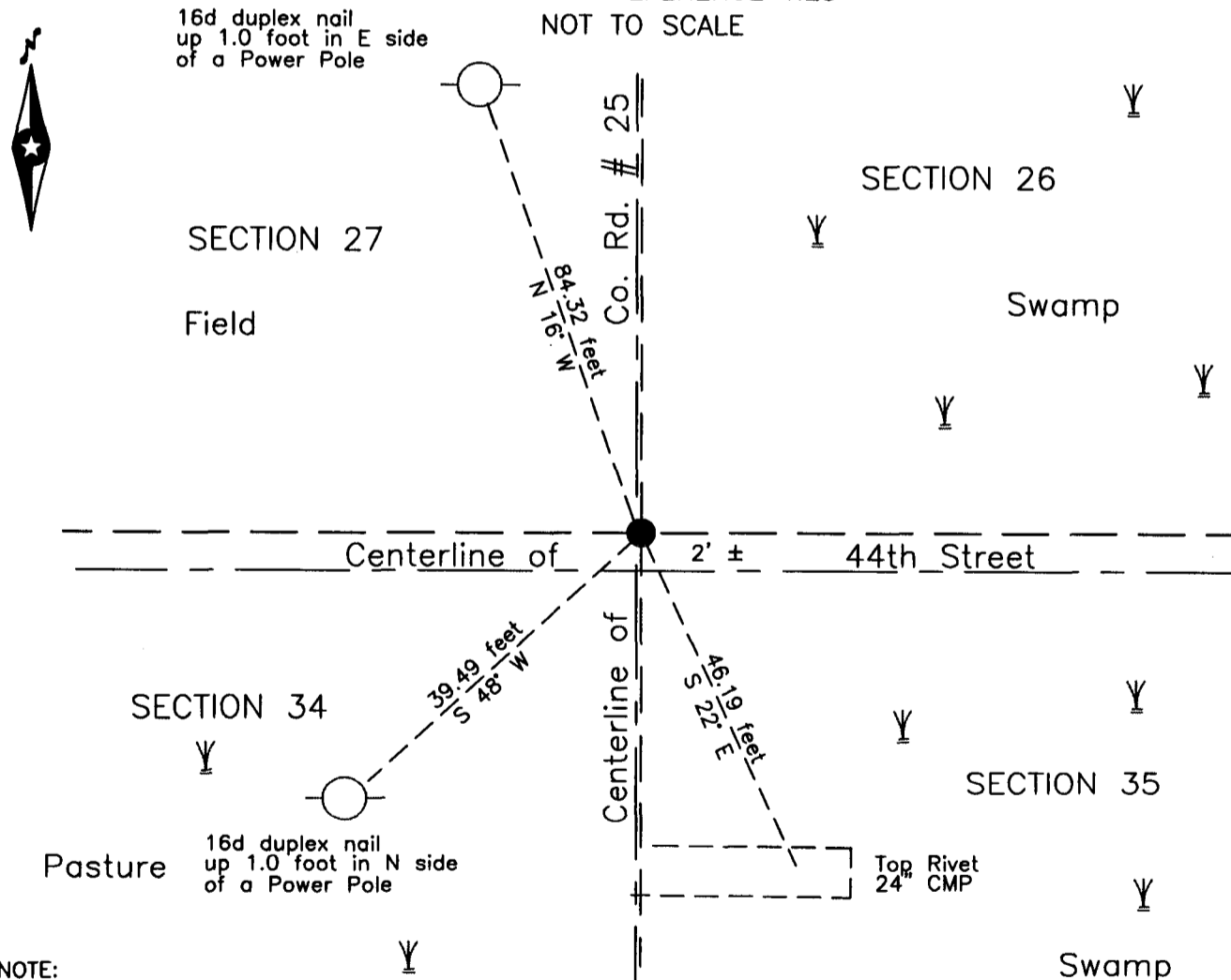
At the corner location shown on the sketch:

On 4 May 2011 found a sharpened wood post point, down 5 feet, on  
centerline of County Road #25.

left monument as found     lowered monument     removed monument (explain)

On 15 July 2014 placed a 1.25 inch by 18 inch iron pipe with plastic cap marked  
RLS 21367. down 0.3 foot on the centerline of County Road #25.

SKETCH OF REFERENCE TIES  
NOT TO SCALE



NOTE:  
All bearings are true

Statement of evidence relative to this corner location is on the back of this page.

I hereby certify that this survey, plan or report was prepared by me or under my direct supervision and that I am a duly Licensed Land Surveyor under the laws of the State of Minnesota.

Terry L. Freeman, Cass County Surveyor  
Date 7/16/14 MN License No. 21367

**Index No. V.0-17.0**Statement of Evidence**Northeast corner of Section 34, Township 137 North, Range 31 West, 5th Principal Meridian.**

- Aug. 1870 R. Cronk, General Land Office (GLO) Deputy Surveyor, notes for the subdivision of Township 137 North, Range 32 West, set a post for the original corner and referenced it as follows:  
 20" Tam. S 41° E 40 links(26.40 feet) 12" Elm N 61° W 65 links(42.90 feet)  
 14" Tam. S 20° W 71 links(46.86 feet) 8" Elm N 42° E 47 links(31.02 feet)  
 The above record is on file with the Minnesota Historical Society in St. Paul, Minnesota, copies are filed with the Cass County Highway Department, Surveyor's Office (CCHD/SO).
- Dec. 1898 J.M. Canfield, Cass County Surveyor, Road Calendar A, page 81, on file in the CCHD/SO, indicates corner at intersection in road. This road is also shown in Book B, page 32.
- June, 1905 W.H. Hallett, Surveyor's Report for Township Road Order, on file in the CCHD/SO, indicates a road on the east line of Sections 34, beginning at the subject corner.
- June 1907 J.W. Curo, Cass County Surveyor, LS 1428, Survey Record Number 89, Book A, page 178, on file in the CCHD/SO, states "I find all of the trees and set a good solid pine post for the section corner well into the swamp." In Curo Book 99, page 14 he states "At corner 26-27-34-35-137-31 there are 3 posts set. After setting my true cor. the Bearing Trees stand":  
 Elm 8 N 39° 15' E 29.22 ft  
 Tam. 20 S 34° 25' E 26.40 ft  
 Tam. 14 S 25° 45' W 45.15 ft
- May 1908 J.W. Curo, Cass County Surveyor, LS 1428, Curo Book 95, page 59, on file in the CCHD/SO, states "Come back to square stake formerly set by me for live corner to Secs 26-27-34-35."
- July 1920 L. Mackey, Survey Record Number 438, Book C, page 356 and Curo Book 170B, page 8, on file in the CCHD/SO, states "Beginning at the cor to Secs. 26-27-34-35 which I Reestablish from old Gov. B.t. Elm N 61° W .65 chains. I set an I.M. 2 ½ x 30" flush with the ground in center of Road intersection." The subdivision is recorded in the Cass County Recorders Office on January 8, 1921 with no document number.
- May 2011 B. Hippen, technician and P. Swentkofske, CCHD equipment operator, records of the CCHD/SO, excavated a 6 foot east-west by 10 foot north-south area based on record dimensions. The dig was 5.5 feet deep 4.5 feet to natural soil. A sharpened wood post point lying horizontal adjacent to a hole it was pulled from was recovered down 4.5 feet. A 60d spike was set at the surface and witnessed as follows:  
 Power Pole N 16° W 84.32 feet 24" CMP Rivet S 22° E 46.19 feet  
 Power Pole S 48° W 39.49 feet
- July 2014 B. Hippen, technicians CCSO, records of the CCHD/SO, set a 1.25 inch by 18 inch iron pipe with plastic cap marked RLS 21367, place wood post point, adjacent on the southeast side, all down 0.3 foot, on centerline County Road Number 25, 2 feet, more or less, north of centerline 44<sup>th</sup> Street, 2011 witnesses all good.

The monument, recovered and established references for the position are shown on the face of this document.

**Analysis of the recovered record data, field evidence and survey measurements, indicates that the monument set by CCHD/SO is the correct perpetuation of this corner.**

**County Coordinates (Cass County South)**

**Northing 278421.77**

**Easting 472274.98**