

CERTIFICATE OF LOCATION OF GOVERNMENT CORNER

N1/4 Corner of Section 32, Township 138N, Range 31W, 5th p.m., State of Minnesota, County of Cass

At the corner location shown on the sketch:

On _____ found a _____
Date _____

left monument as found lowered monument removed monument (explain)

On 12/12/2012 placed a 3/8" REROD WITH RLS CAP NO. 17774
Date _____

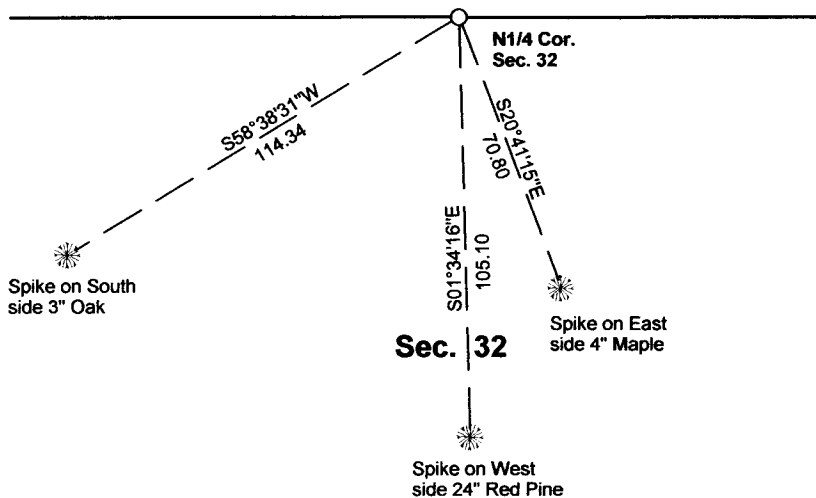
SKETCH OF REFERENCE TIES

Tie Distances are measured to the spikes.

Cass County Coordinate System (South Zone)
N= 309784.6706 E= 459051.0455

○ Set Re-Rod with RLS cap No. 17774

● Found Pipe



Sec. 29

Sec. 32

NOT TO SCALE

Statement of evidence relative to this corner location is on back of page.

I hereby certify that this document and the data contained herein was prepared by me or under my direct supervision.

Marvin R. Kohout 28 DEC 2012
Marvin R. Kohout Date

Registration No. 17774

Land surveyor

OFFICE OF COUNTY RECORDER



A000603804

**OFFICE OF THE COUNTY RECORDER
CASS COUNTY, MINNESOTA
CERTIFIED, FILED, AND/OR
RECORDED ON**

7/10/2014 11:20:35 AM

AS DOC #: A000603804

PAGES: 2

REC FEES: 0.00

**KATHRYN M. NORBY
CASS COUNTY RECORDER**

BY SR Dep

Page 1 of 2 A000603804



INDEX NO. V.0 - 7.0

STATEMENT OF EVIDENCE

NORTH QUARTER CORNER SECTION 32, TOWNSHIP 138N, RANGE 31W, 5TH P.M.

NOV. T.B. WALKER, GENERAL LAND OFFICE (GLO) DEPUTY SURVEYOR SET A POST
1870 AND MARKED B.T.'S. REFERENCES ARE:

6" ASPEN	6" BIRCH
S 2 W	S 41 W
41 LKS	50 LKS

AUG. B. HIPPEN, CCSO TECHNICIAN, RECORDS OF CCSO, MADE A SEARCH AT THIS
2006 POSITION AND FOUND IT TO FALL IN A POND

2012 MARVIN KOHOUT, LS NO. 17774 AND DOUG STILLE, TECHNICIAN, OF KOHOUT
LAND SURVEYING, SEARCHED FOR EVIDENCE OF THIS CORNER, NOTHING FOUND.
A 3/8" DIA. REROD WITH RLS CAP NO.17774 WAS SET MIDWAY AND ON LINE
BETWEEN THE NORTHEAST CORNER OF SECTION 31 AND THE NORTHEAST CORNER
OF SECTION 32.