

CERTIFICATE OF LOCATION OF GOVERNMENT CORNER

NE Corner of Section 31, Township 138N, Range 31W, 5th p.m., State of Minnesota, County of Cass.

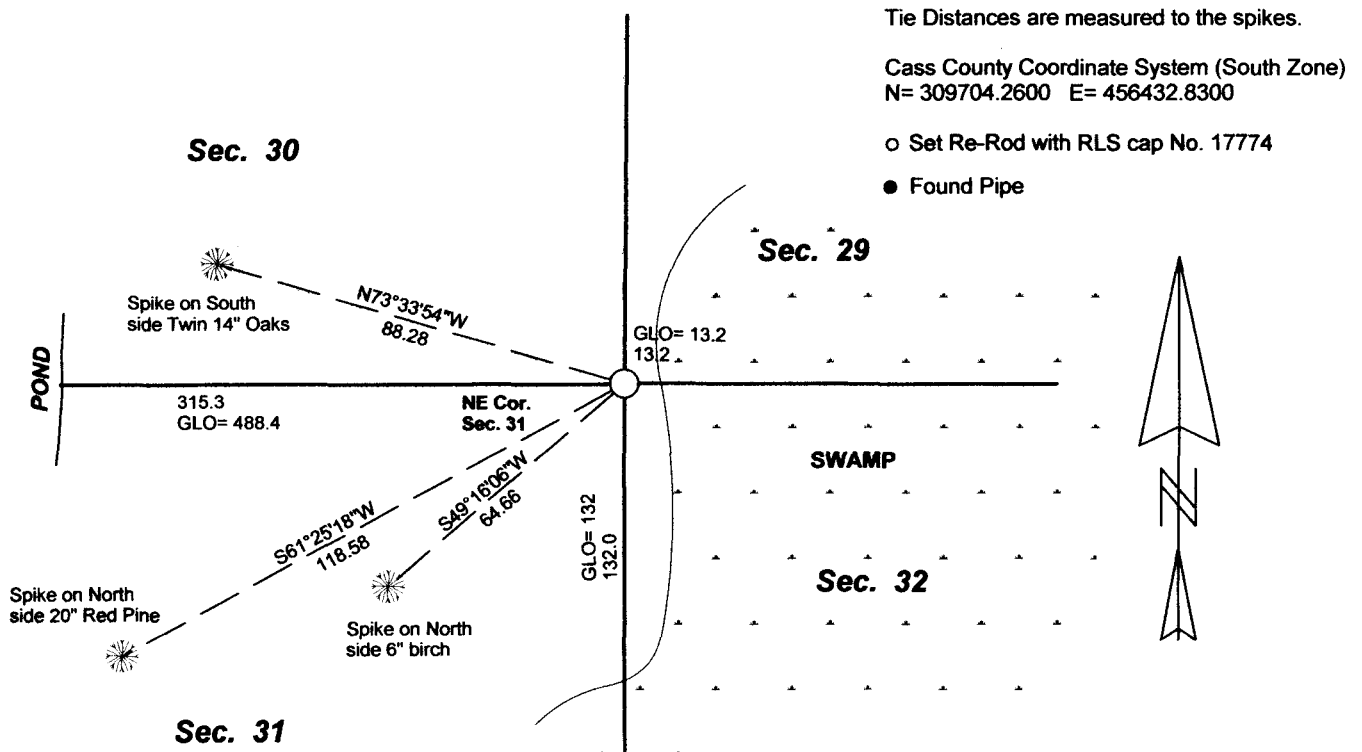
At the corner location shown on the sketch:

On _____ found a _____
Date _____

left monument as found lowered monument removed monument (explain)

On 12/03/2012 placed a 3/8" REROD WITH RLS CAP NO. 17774
Date _____

SKETCH OF REFERENCE TIES



Tie Distances are measured to the spikes.

Cass County Coordinate System (South Zone)
N= 309704.2600 E= 456432.8300

○ Set Re-Rod with RLS cap No. 17774

● Found Pipe

NOT TO SCALE

Statement of evidence relative to this corner location is on back of page.

I hereby certify that this document and the data contained herein was prepared by me or under my direct supervision.

Marvin R. Kohout 28 Dec 2012
Marvin R. Kohout Date
Amended 18 June 2014

Registration No. 17774

Land surveyor

OFFICE OF COUNTY RECORDER



A000603803

OFFICE OF THE COUNTY RECORDER
CASS COUNTY, MINNESOTA
CERTIFIED, FILED, AND/OR
RECORDED ON

7/10/2014 11:20:34 AM

AS DOC #: A000603803

PAGES: 2

REC FEES: 0.00

KATHRYN M. NORBY
CASS COUNTY RECORDER

BY SR Dep



INDEX NO. V.0 – 5.0

STATEMENT OF EVIDENCE

NORTHEAST CORNER SECTION 31, TOWNSHIP 138N, RANGE 31W, 5TH P.M.

NOV. T.B. WALKER, GENERAL LAND OFFICE (GLO) DEPUTY SURVEYOR SET A POST
1870 AND MARKED B.T.'S. REFERENCES ARE:
 8" NORWAY PINE 10" NORWAY PINE
 S 31 1/2 W N 81 W
 102 LKS 147 LKS

MAY B. HIPPEN, CCSO TECHNICIAN, RECORDS OF CCSO, MADE A SEARCH AT THIS
2004 POSITION AND FOUND IT TO FALL IN A SMALL MARSH FLOODED BY BEAVER.

2012 MARVIN KOHOUT, LS NO. 17774, AND DOUG STILLE, TECHNICIAN, OF KOHOUT
 LAND SURVEYING, SEARCHED FOR EVIDENCE OF THIS CORNER, NOTHING FOUND.
 A 3/8" DIA. REROD WITH RLS CAP NO.17774 WAS SET AT DISTANCES IN HARMONY
 WITH HISTORICAL FEATURES CALLED FOR IN THE ORIGINAL GOVERNMENT
 SURVEY.