

CERTIFICATE OF LOCATION OF GOVERNMENT CORNER

N1/4 Corner of Section 30, Township 138N, Range 31W, 5th p.m., State of Minnesota, County of Cass.

At the corner location shown on the sketch:

On _____ found a _____
Date _____

left monument as found lowered monument removed monument (explain)

On 12/04/2012 placed a 3/8" REROD WITH RLS CAP NO. 17774
Date _____

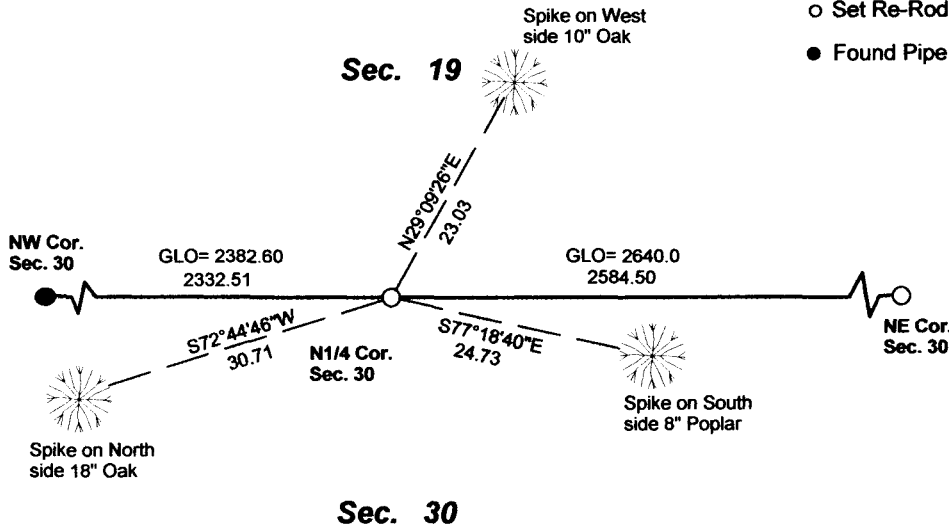
SKETCH OF REFERENCE TIES

Tie Distances are measured to the spikes.

Cass County Coordinate System (South Zone)
N= 314953.1024 E= 453855.7856

○ Set Re-Rod with RLS cap No. 17774

● Found Pipe



NOT TO SCALE

Statement of evidence relative to this corner location is on back of page.

I hereby certify that this document and the data contained herein was prepared by me or under my direct supervision.

Marvin R Kohout 28 Dec 2012
Marvin R. Kohout Date

Registration No, 17774

Land surveyor

Amended 18 June 2014

OFFICE OF COUNTY RECORDER



A000603794

OFFICE OF THE COUNTY RECORDER
CASS COUNTY, MINNESOTA
CERTIFIED, FILED, AND/OR
RECORDED ON

7/10/2014 11:20:25 AM

AS DOC #: A000603794

PAGES: 2

REC FEES: 0.00

KATHRYN M. NORBY
CASS COUNTY RECORDER

BY SR Dep



INDEX NO. R.0 – 3.0

STATEMENT OF EVIDENCE

NORTH QUARTER CORNER SECTION 30, TOWNSHIP 138N, RANGE 31W, 5TH P.M.

1870 DEPUTY SURVEYOR THOMAS B. WALKER , IN THE ORIGINAL GOVERNMENT
SURVEY SET A POST AND MARKED B.T.'S. REFERENCES ARE:
16" W. PINE 20" W. PINE
S56W N8E
23 LKS 31 LKS

DEC. MARVIN KOHOUT, LS NO. 17774, AND DOUG STILLE, TECHNICIAN, OF KOHOUT
2012 LAND SURVEYING SEARCHED FOR EVIDENCE OF THIS CORNER, NOTHING
FOUND. A 3/8" REROD WITH RLS CAP NO. 17774, WAS SET ON LINE BETWEEN
THE NW CORNER AND NE CORNER OF SECTION 30, PROPORTIONATE TO
ORIGINAL GOVERNMENT SURVEY DISTANCES.